

HAVE A SAFE
AND HAPPY HOLIDAY!

FIND OUT
HOW TO
TRAVEL THE NATION
PAGE 3

THE ALBRIGHTIAN

ALBRIGHT COLLEGE

READING, PA

December 11, 1992

Admissions Office Set To Rethink SAT Importance In Candidate Selection



Dean of Admissions and Financial Aid,
Bill Stahl

by Courtney Paskell

Under new guidelines being considered by the Admissions Office, SAT scores may lose some of their emphasis in Albright's candidate selection process because there is evidence that Albright scores, like national scores, have decreased.

In response to this evidence, Bill Stahl, Dean of Admissions and Financial Aid, said there is too much concern with the SAT's.

They are, "Overemphasized in the whole selection process—from parents to guidance counselors, and they are not that important."

He also said SAT scores in general have been decreasing since the 1960's, since there are more women and minorities taking the SAT, which is often biased against these groups. "Test scores are related more to socioeconomic factors."

Because of this discrimination and questions about the validity of the scores, other colleges are phasing out the SAT. For example, the Franklin and Marshall faculty voted not to include the SAT in the selection process for students in the top ten percent of their class.

At Albright, the Admissions Office is in the process of developing a profile of the kind of student the college would accept, to be finished by the end of this year. The emphasis in this admissions process is switching from aptitude measured by the SAT to high school performance.

According to the Admissions Office, the mean or average SAT scores this year for Albright freshmen fell 40 points (from a total of 1052 to 1012). The median score, which places half of the students above average and the other half below, is the same as it was last year.

Both the median and the mean SAT scores measure the central or average tendencies of students. Admissions counselors say the median is more important than the mean

because it is a better assessment of overall student ability. The median makes no quantitative judgments, but extremely high or low scores can shift the mean in an unrepresentative way.

Stahler says that even though the mean is decreasing, Albright's SAT average of 1012 is nearly 250 points higher than the national average of 865. Albright students score within the 75th percentile nationally.

In a statistical analysis of current Albright students for the Admissions Office, sociology professor Tom Meyers found the SAT is not the sole factor in determining student performance. He also said that only 20 percent of most academic achievement is explained by the admissions criteria, which leaves 80 percent unexplained.

Meyers examined academic achievement and admissions data about SAT's and grade point averages and attempted to correlate them with first and second term grades and averages.

He found no correlation between SAT's and GPA's. For example, in the freshmen class, there were nine SAT scores of 800 or below, and 19 high school GPA's less than or equal to 2.0. In another example, one student in the highest part of the incoming class had SAT's below 800.

Beth Van Velsor, Director of Admissions, said students with low SAT's but high GPA's are, "Well-within the college recommended level." On the other hand, there are Albright

students who are shown to have SAT's between 1100-1150, but now have low GPA's or are on academic probation.

With this in mind, admissions counselors are trying to develop different ways to evaluate students. Stahl said, "This year, we're going to focus on two main factors: high school course selection and performance in this course selection. Last year test scores were more important. This year test scores are helpful, but they are not the best indicators of academic success." Additional factors considered will be number of high school projects, number of honors, subjects, years of foreign language study, class rank, recommendations and writing samples.

Van Velsor said students feel the SAT's define their academic self-worth. But Albright looks at more than just the SAT in the candidate selection process. In fact, she said the more important measures are, "Students' motivation and desire—they are difficult to measure, but they are key factors of academic success."

With a new president and himself as the new dean, admissions is hoping, as Stahl said, "To move from this point in time to the future. We're shifting the review of student applications and we're working with guidance counselors. It's time for Albright to listen to the input of the outside world—to be open to their criticisms and help build a better admissions process and thus, college."

DSA and Faculty Do Lunch

by Katherine Ritz

The Pine Room was buzzing with conversation and laughter at the Wintertime Faculty Luncheon on Tuesday, December 8th. The tables were laden with a variety of different foods. Subway provided deluxe cheese and meat hoagies six feet in length. The Day Students' Association provided the rest of the meal consisting of tomato soup with crackers, brownies, holiday cookies, hot cider, and coffee.

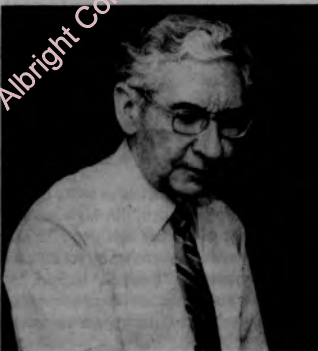
The Day Students' Association holds a faculty luncheon each semester to provide the faculty, administration, and staff with the opportunity to meet the day students. There

were approximately 100 members of the faculty, administration, and staff in attendance including such faces as Academic Dean Eugene Lubot, President Ellen S. Hurwitz, and Head of Career Planning and Placement Virginia Scullion.

President of the Day Students' Association Katherine Ritz and Vice President Lori Messersmith-Brandt, along with other members of DSA greeted the guests at the door while DSA Advisor Stratton Marmarou oversaw the event.

Overall the event was a success. All leftover food was donated to the Berks County Food Bank in the spirit of the upcoming holiday.

Candlelight Carol Service



Dr. Francis Williamson, Choir Director

by Dr. Francis Williamson

The traditional Candlelight Carol Service will be presented by the Albright College Choir, Sunday evening, December 13th, at 7:30 p.m. Alumni, faculty, staff and the community join the student body for this seasonal occasion.

Becky Tarbell accompanied by a violin will open the service with Christmas verses by the English poet Robert Herrick. As candles are lit, the choir will process in

singing a colonial American song written by William Billings.

A nine piece brass ensemble directed by Kristel Kemmerer, band director, will provide two anthem accompaniments and a 15 minute recital prior to the 7:30 p.m. procession.

Rami Lee, cellist, Sarah Gerns, Nicole DiCello, and Holly Scheffey, flutists will play music of Haydn and choir descants.

A short cantata "The Birth of Christ" by Willi Richter will be performed. A prominent musician and composer active in the musical life of Albright and the Berks area, Richter wrote this cantata in 1933. It continued to be published until the 1980's.

Dr. John Gordon, Chaplain, will be liturgist with other students assisting in the Scripture Readings. The Lion Diplomats usher and lead in the candlelighting.

Prior to the service, the choir and their parents join for a meal and fellowship in the rotunda of the Center for the Arts.

Matt Reiniger will be tenor lead in a Christmas setting in a calypso style. Bonnie Sherwood, Amanda Probert, Sharon Thomas, Kieran Daly, and Craig Zechman will be among the soloists.

The Albright community is encouraged to join in this beautiful occasion of singing together.

INDEX

NEWS	PAGE 1-3
EDITORIALS	PAGE 4-5
ENTERTAINMENT	PAGE 6-7
COMICS	PAGE 9
DEPARTMENTS	PAGE 10
SPORTS	PAGE 11-12

I.S.A. Election Results



photo by Wil Johnson

John Amoh, I.S.A. President

by Spencer Finch

The International Students Association (I.S.A.) is under new administration. John Amoh was chosen as the new president on December 1st.

Amoh gained about three-fifths of the total votes in a strong show of support after a campaign that was characterized by small squirmishes among other members of the organization.

Accordingly, Amoh says the main aim of his administration is, "A strong unification of all international students at Albright and to promote and encourage the relations with all students." Amoh sees the role of the I.S.A. as

a much more active and participatory organization. One of the ways Amoh hopes to change the I.S.A. is to increase the membership of American students, something that was possible in the past but not widely promoted. The I.S.A. constitution has always had a clause permitting and encouraging the membership of American students. Showing he is serious about this issue, he already has a list of 20 students who want to join the organization. Anyone who is interested in joining the association should contact Amoh at Box 132.

Another aim of the new I.S.A. president is to address the task of reorganizing the organization to work closely with the new Albright President, Ellen S. Hurwitz, the Dean of Students, faculty and staff. "With the appointment of Dr. Ellen S. Hurwitz as President of Albright and other new employees in the faculty and staff, Albright appears to be at the beginning of a new and dynamic era," Amoh said.

And that seems to be the future of the I.S.A. also. Fast to action, the new administration is already starting to work. The first event sponsored by the new administration is a farewell ceremony for outgoing executives Adnan Ahmed, President; Paulo Reategui, Vice-President; Mohammed Jafferli, Secretary; and Habib Moosa, Treasurer. The event will be held on Friday, December 11th beginning at 4:30 p.m. in the Campus Center South Lounge.

Other members of the new administration are Dipa Brahmbhatt, Vice-President; Chilufya Chilangwa, Secretary; and Atsushi Maehara, Treasurer.

Major Myths Concerning W.W.II

by John Hatchett

Albright welcomed another speaker to the Klein Lecture Hall on November 30th. Dr. Jeanne Thomas Allen from Temple University came to speak about World War II. She said that she is interested in World War II because it was before her birth.

Dr. Allen began by explaining to the audience what war was like during this time period in the United States. It was a time when the U.S. felt very good about itself and it's moral position.

She then pointed out the major myths about W.W.II in the U.S. First, the idea that a super weapon will create peace through fear and this idea is conveyed through the precision bombing that occurred during the war.

Second, the U.S. had a utopian national unity during the war. The U.S. had five utopian elements: Pearl Harbor as innocence, contempt toward Japan, holy war, isolation, and economic hardship.

Finally, the price of that unity was hidden. Censorship was the biggest form hiding the truth. All photographs had to be approved by the Army and 30,000 U.S. deaths weren't reported until late in the war. Misinformation was also used to create the utopian aura. The U.S. military shaped how the war was seen in the country. This led to utopian interpretations of war by Hollywood.

Dr. Allen's use of film clips from "Star Wars," and "Memphis Belle" enhanced the lecture, and helped the audience understand the different aspects of war.

The Cue Arrives at Albright

by Brandi Berstler

This year, when Senior Katherine Ritz goes to pick up her yearbook during finals week of the fall semester, she will be doing two things differently than she did last year. The first is that she will be picking it up at the bookstore instead of waiting in line at the Cue, the Albright yearbook office. The second is that when she picks it up she will be shelling out \$5 for it.

Ritz doesn't like one of these changes. "If we're paying five bucks for it, it better be a damn good yearbook," says Ritz. "I don't want anything mediocre." She may not like the idea of the new charge, but she does like the idea that she's going to buy the Cue from the bookstore because it will be easier for her to pick up.

The new charge and location for the selling of the yearbook comes from a decision made by the Albright Student Government Association on October 25th. According to Jason Albert, an S.G.A. member, "Due to budget cutbacks it was necessary, and it is not an unreasonable fee for a book full of memories."

The S.G.A. did not entirely like the idea of the charge, but they found it necessary. This charge will raise about \$2,750 of the \$25,000 it costs to produce the yearbook.

Albert realizes that since this is the first year of the charge there will be resentment from juniors and seniors. However, he does not think it will affect the freshmen and sophomores because they have never gotten a yearbook for free before.

The S.G.A. decided to sell the yearbook in the bookstore because it will provide greater access to the book, which is supposed to come in today. Also, as Sue Rupert, *The Cue* Editor-in-Chief pointed out, "It will take a lot of hassle from my staff because they will not have to try to man the office eight hours a day and a lot more people will buy the book because they can charge it."

Even though sophomores, juniors and seniors will have to pay for the yearbook now, the class which just graduated in May, and all graduating classes from now on, will still receive the book for free because it is their senior yearbook. Freshmen will have a chance to buy yearbooks now, but only after a certain period of time which has not yet been decided yet. This will give all of the upperclassmen a chance to buy the book.

As for Ritz's "damn good yearbook," she will probably get it. According to Rupert, she has, "the best staff in the world" and, thanks to the book being sold in the bookstore, the staff can concentrate on making the book instead of selling it.

~Alpha Delta Pi ~ Phi Mu ~ Phi Sigma Sigma ~ Sigma Kappa~

Informal Rush

February 9th at 7:30 p.m.
Big Meeting Room, North Hall

Formal Rush

February 17th-20th

Themes:

First Night- "Going to the Movies"
Second Night- "Once Upon a Time"
Third Night- Anything Goes
Fourth Night- Preference Night

~Alpha Delta Pi ~ Phi Mu ~ Phi Sigma Sigma ~ Sigma Kappa~

Fractals: 21st Century Math?

by Spencer Finch

The Math Association closed off their activities for the year with a bang. First, on November 20th the Association sponsored a trip to Kutztown University to attend workshops and a lecture about fractals.

Four different workshops carried the participants from the beginners level up to more advanced levels. One of the most interesting workshops involved manipulating a fractal on a Macintosh computer screen. By zooming in the image of a fractal, no detail was ever lost. It was like opening up one of those famous Russian dolls only to find other dolls within it waiting to also be opened (and repeating this pattern forever).

The guest lecturer was Robert Devaney, one of the most prominent mathematicians

today. He described fractals as being on the cutting edge of research. "In high-schools and in college we are still teaching 17th and 19th century math. How can we expect students to learn anything?" "Fractals," he said, "is 21st century math. Fractals will open the way for students to start regaining their interest in math."

Second, the Math Department and the Math Association sponsored the participation of six students at the Putnam exams on Saturday, December 5th.

These exams are nationwide tests for proficiency in Math and are famous for having questions that are almost impossible to solve in the given time. The average score for the test is 11 out of 120 possible points. Hopefully, some of Albright's students may do better than that.

by Holly Scheffey

On February 17th, 1993, the sororities of Albright College will begin four days of formal rush parties. Alpha Delta Pi, Phi Mu, Phi Sigma Sigma, and Sigma Kappa will join hands to welcome under and upperclassmen alike into their circle of friendship.

Twelve women from the various sororities have been selected to serve as Rho Chi's. They are specially trained to guide rushees through the rush parties and to answer any questions rushees may have. Rho Chi's are not permitted to "plug" their sorority and in staying neutral throughout the rush process, allow rushees to make their own decisions about which sorority to join.

Once the rush process is over, the rushees fill out their preference cards prioritizing their choice of sororities. At the same time

the invitation committee of each sorority decides which rushees to invite to be a part of their sorority. The Panhellenic Council then matches up the two lists and issues the formal invitations for membership, also known as bids.

There are certain requirements a woman must fulfill before she is allowed to participate in Formal Rush. A rushee must be enrolled full-time at Albright, have a minimum cumulative grade point average of 2.4, and must have completed at least three classes here at Albright.

As stated in the 1993 Rush Information Booklet, "The friends and memories gained throughout special experiences will undoubtedly serve as treasured thoughts long after the years at Albright College have ended," and "sorority life offers a bond of friendship which can only be described as sisterhood."

Formal Rush Set For Spring

Travel the Nation

American Youth Hostels Can Make It Possible

Washington, D.C. — Every year the chance for weekend, holiday or spring break travel presents itself to thousands of college students. Just taking off for a weekend or longer is a welcome break from classes and studying. But — it costs MONEY.

Hostelling International/American Youth Hostels to the rescue! AYH hostels, more than 200 across the USA, provide dormitory-style accommodations for travelers, just like yourselves, for only \$7 to \$15 per person, per night.

Imagine — Los Angeles/Santa Monica for just \$14 a night... or Miami Beach and the hot Art Deco District for only \$10. Like skiing? Stay in Pennsylvania's Pocono Mountains for a mere \$8... or near some of Vermont's finest ski areas for just \$15... or Winter Park, Colorado, for only \$11.

Like big-city excitement? Even New York is affordable for \$18.75 a night... or enjoy the multitude of free attractions in Washington, D.C. for only \$14.

AYH has a network of hostels throughout the USA, in major cities, in and near national and state parks, in the mountains and at the seashore.

AYH hostels make travel affordable for anyone on a tight budget. They also have fully equipped self-serve kitchens (stretch that travel dollar even more), dining areas and common rooms for relaxing and socializing.

Today's hostels offer smaller dorm rooms, upgraded modern facilities, longer daytime hours and late-night access. Most AYH hostels also have a variety of free and low-cost recreational and social activities for guests.

And, you'll have the chance to stay at some of the most unusual overnight accommodations for travelers in the world. Spend the night in a lighthouse on the California

coast, an Indian tipi on an island in Puget Sound, a historic landmark building in New York City, or a treehouse in a Georgia pine forest.

Join Hostelling International/American Youth Hostels and you also automatically become a member of the International Youth Hostel Federation (IYHF), the largest travel organization in the world with more than 6,000 hostels in 70 countries and more than 4-1/2 million members.

Your HI/AYH membership card will be valid for 12 months, and you'll receive a free copy of "Hostelling North America: A Guide to Hostels in Canada and the United States." It's filled with information on where to go, what to see and do, and special programs and activities at AYH hostels that really help you to get to know a place, inexpensively. And, it contains detailed listings for nearly 300 hostels in the USA and Canada. (Non-members may purchase a copy for \$7.)

American Youth hostels is a non-profit corporation dedicated to helping all, especially young people, gain a greater understanding of the world and its people through its network of hostels and educational and recreational travel programs.

Hostelling International and the Blue Triangle are the seal of approval of the IYHF, guaranteeing quality budget accommodations for travelers of all ages.

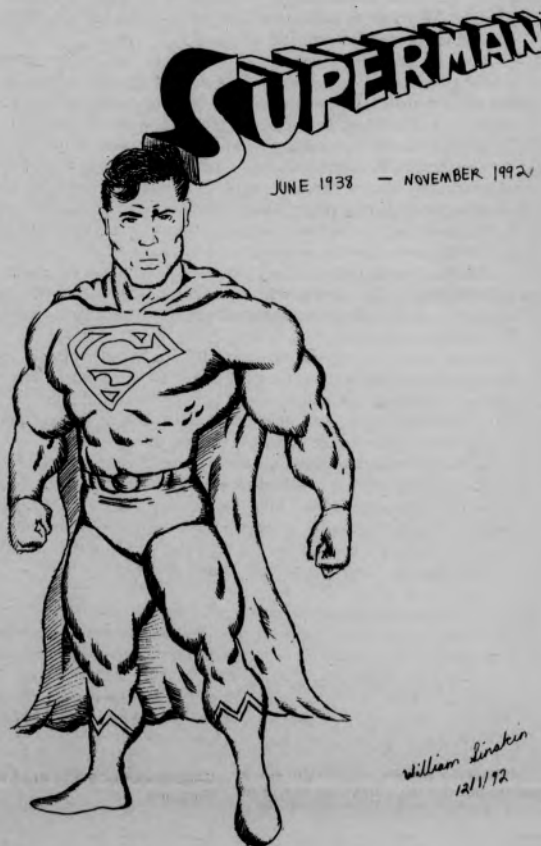
For a free information brochure and membership application, contact:

Hostelling International/
American Youth Hostels
Dept. 481
P.O. Box 37613
Washington, D.C. 20013-7613
(202) 783-6161

This article was taken from a press release published by American Youth Hostels.

Superman Killed!

Is this the end?



See the first issue of next semester for more details.

College Bowl: Tournament of Champions

by Spencer Finch

How many faces does Lon Chaney have?

That is the kind of generally useless question that nobody knows the answer to. That is, nobody except the participants in the College Bowl.

Participants in the event, held November 30th through December 2nd in the Campus Center, included teams from dorms, such as Walton, Crowell and Smith; from fraternities and sororities, such as Alpha Delta Pi and Sigma Phi Epsilon and from other groups, such as Albright Environmental Action and the WXAC radio station.

How many events are there in the pentathlon?

The questions this year were even harder than usual, according to some participants. Some of the hard ones included one about who were the highest ranked members of the armed forces ever; who was Richard Nixon's major opponent (a trick question: not Kennedy, but Adlai Stevenson) and a series of questions concerning statistical data published in the *USA Today* about African Americans. For example, did you know that African Americans compose 50% of all moviegoers and 54% of credit card users? The fact that this was considered a difficult question reflects perhaps the difficulty in making facts about all the different ethnic groups in society accessible

to all of society's segments.

How many players are there on a hockey team?

The group Question Mark #3 (there were two other groups with the same name) was the winner of this year's College Bowl.

How many points does a snowflake have?

Scott Russell, team captain, said that his team may even reach the East Coast regional finals. He can probably back his claim, since he participated in the national high school College Bowl championship a few years back.

The other members of the Question Mark #3 team include Cyndi Reiber, Greg Ferris, Jeremiah Gregg and new addition Andre Wynn.

How many years can a person go missing before he or she is declared legally dead?

The next stage of the College Bowl competition will be held in February at Susquehanna University.

If you divide the number of faces of Lon Chaney by the number of events in the pentathlon, add to the result the number of men on a hockey team, multiply that by the number of points on a snowflake and subtract the number of years that a person can go missing before being declared dead, the result should be 1229. That is, if you have the right answer.

The little charade above was provided courtesy of Scott Russell.

Quote of the Week:

"I always knew I'd look back at the times I cried and laugh, but I never thought I'd look back at the times I laughed, and cry."

-unknown

Student Teachers Take Manhattan

by Gail Rabstein, Managing Editor

On Wednesday, December 2nd, the 1992 Student Teachers of Albright College went to Manhattan to see the filming of the famous children's show *Seasame Street*. During their stay in the city they not only got to watch the filming of a segment of the show, but they also got to experience FAO Schwartz, the amazing (expensive) toy store. Some of the perspective teachers even went as far as surrounding themselves with large stuffed apes.

During the taping of the show, the student teachers got to meet Luis, Maria, Big Bird and they even got to meet with some of the

producers and camera men. It was a very exciting day. They spent two hours watching the taping of one scene. They also got to watch the scene that was taped the day before with the rap singer Queen Latiffa singing about the letter O. Meeting the stars was really terrific, all your childhood years you dream of what it would be like to talk to Maria, and we got to talk with her.

The experience was one that could never be replaced. Although, *Seasame Street* was the most exciting part of the day, we also got to go to FAO Schwartz, T.G.I. Fridays, we got to park in a really shady parking lot, and we got to meet Dr. Ruetrakul's son. All in all it was a pretty great experience.

EDITORIAL

As the last class day before final exam week, and thusly the end of the semester, it is once again time to comment on our past four months here at Albright. Therefore we will comment on our new president, who has just finished serving her first semester term.

Well, Dr. Hurwitz deserves a pat on the back. She has successfully survived the semester with no mishaps. It should be viewed as impressive that she is so visible and available to the student body, while not becoming immersed by the incredible discontent spreading on this campus. In fact, Hurwitz presented the students with an open forum with which to wage their complaints. President Hurwitz and a panel consisting of several other administrators opened themselves up for a barrage of complaints from students, ranging from Albright unity and diversity to increased sports funding and variable cafeteria meal plans. The comments were discussed and are still being considered for future change. All in all, there were many productive ideas and may actually prove beneficial to the instigation of policy changes. Dr. Hurwitz intends to have another open forum each semester, however it has been suggested by many that perhaps one a month would be advantageous.

Dean Stayton Wood, who is back in full force, has attempted to dispel the misconceptions concerning the social policy. He expressed the intention to insure a safe yet entertaining social policy. Wood did state that the current social policy is, in effect, the same as it used to be, however, it has merely been enforced more rigorously than usual.

This year has been rather tame and has displayed little in the way a controversy (so far), but undoubtedly there will be something in the future. However, it is thought that such forums as the one presented by Dr. Hurwitz and the availability of the *Albrightian*, to express discontent (on contentment) should be utilized more often so that everyone, administrators included, remain informed on what concerns the campus.

It is also important to remind everyone that *The Albrightian* will be looking for new editors in the next couple of months so that the graduating seniors will have time to train them. So, if you are interested in providing such a service to the Albright Community, let the editors know. The positions opening up will be: News, Features, Departments, Advertising, and Computer Consultant. So, jump on board. The next issue of *The Albrightian*, won't be coming out until February.

We at *The Albrightian*, would like to wish everyone "Good Luck" on your exams and have a safe and merry holiday.

THE ALBRIGHTIAN

Rebecca York '93.....	Editor-in-Chief
Gail Rabstein '93.....	Managing Editor
Tara Aileen Scanio '95.....	News Editor
Teresa Lloyd '93.....	Features Editor
Mike O'Brien '94.....	Sports Editor
Nicole Hartman '93.....	Department Editor
Kim Sobjak '94.....	Entertainment Editor
Brian Osborne '94.....	Editorial Editor
Jarrod Schoffler '95.....	Science and Health Editor
Wil Johnson '95.....	Co-Photography Editor
Jennifer M Iacono '96.....	Co-Photography Editor
Kathy Ritz '93.....	Advertising Editor
Danene Sorace '94.....	Business Editor
Leanne Grossi '94.....	Circulation Editor
Roger Harkavy '93.....	Computer Consultant

The Albrightian is published bi-monthly by the students of Albright College except during vacation, holiday, and examination periods. This publication is printed by The Windsor Press, Inc., Hamburg, PA. All submissions to the *Albrightian* become the property of the *Albrightian* and the Editors hold the copyright. All opinions expressed in the *Albrightian* reflect those of the author (column, letters) or the editorial staff (editorials) and are not necessarily those of Albright College, its faculty, staff, or administration.

Letters Policy: *The Albrightian* encourages comments on news coverage, editorial policy, and College affairs. Letters must be typewritten or legibly printed, double-spaced and no longer than one and one-half pages. All letters must be signed and should include address and phone number for verification. Names may be withheld on request. *The Albrightian* reserves the right to edit letters for length and to reject letters if they are libelous or do not conform to standards of good taste. Send letters to Box #107. All letters received become the property of the *Albrightian*.

The Albrightian Staff would like to wish everyone a safe and happy holiday season.

Letters to the Editor

A Show of Support

To the Editor:

When contemplating your decision on what college to attend what factors did you consider? Most likely you considered academic reputation, price and extracurricular activities. These things were at the top of my list for which college to attend. But when finally deciding on Albright, I had other schools in mind that were comparable to Albright in all of these aspects. The deciding factor for me was the closeness of the Albright community. Unfortunately, the image of Albright's community that I had sensed has not lived up to my expectations.

This question of the loss of unity is exactly what Dave Warren is addressing in his article, "Unity or Lack Thereof." It has been my observation that Dave is and will be receiving unwarranted attacks because he had the courage to voice his convincing and well thought out position. Many of you might not realize that Dave has received threatening anonymous phone calls. Being a friend of Dave's I have noticed changes in many people's behavior towards him. Doesn't this just illustrate his point? Rather than consider the possibility Dave might have made some valid points, these anonymous people seem to displace the blame. For instance, in reference to one of Dave's

examples several groups have started pointing fingers.

As an Albright student I want to thank Dave for taking the courage to voice his opinion. Since writing the article Dave has also received many positive comments towards the ideas presented in his article. He has opened the door for these people to express their own opinions. After all, isn't the responsibility of student leaders to break the ice and start the ball rolling? Well Dave has done just this. Wouldn't it be nice if all the student leaders had the initiative and strength to stand up for what they believe in? I firmly believe that we as college students are supposed to challenge the "status quo" and attempt to make a positive change for the good of the school. As I see it, the reason that several organizations are so upset is that they refuse to consider the well-being of the school. These organizations are only concerned with the reputation of their groups.

In the 1990's as the nation adopts a position of tolerance for different viewpoints, we should accept Dave's stance on the issue of unity. I agree with Dave wholeheartedly. But even if one disagrees with his position, one must respect his attempt to solve the obvious problem of unity on Albright's campus.

Stephen J. Kmet

Independent Support For Greeks

Dear Editor,

I am writing in response to David Warren's letter that appeared in the last issue of the *Albrightian*. First, I will agree that the social life here at Albright could be better. Everyone knows that. It could, however, be much worse. That is not the issue I wish to address. I was very bothered by the "us against them" tone that Mr. Warren seemed to set in his letter. His references to the Greek system as a system that totally excluded non-Greeks upset me a great deal. I am not Greek. I never pledged a fraternity. However, I can say that I have friends, or at least friendly acquaintances in every Greek organization at Albright. Some of my closest friends are Greeks. I respect them for their choice, and they respect me for mine.

Secondly, I do not see mixers between Greek organizations as a threat to Albright social life. Put the two largest Greek organizations at Albright together for a social event, and you might have 120 people at the event. This is hardly a large percentage of our student body. If two organizations want to have a private event, is that not their right? How does that threaten the Albright community? Sure, these parties only allow those people who are members of the organizations involved to attend, but so what? That is their decision. That should not determine what the rest of the campus does on a Friday night. I have friends in fraternities, my roommate is in a fraternity, my girlfriend is in a sorority. My "GDI" status has never once affected my relationship with any of these people. I socialize with them, and have no problem doing so as an independent.

The other point I would like to address is the cafeteria seating issue. Mr. Warren, do you sit at a different table, in a different area of the cafeteria, at every meal? I would be willing to bet you do not. Yes, Greeks sit at certain tables, but so does every other group of people at Albright. Most people sit in the same areas at every meal. By "group," I mean a group of guys or girls that always eat together, or sports teams that eat together, and so on. Everyone usually eats with the same people. As far as members of a sorority being rude to someone that sat at "their table," I do not know what to say. I will say that I have never been told by a Greek organization that I could not eat with them. I am sure that kind of incident has occurred, but an anti-Greek attitude will not make things at Albright any better.

The biggest problem here is the system of labels that exists at Albright. Saying, for example: "He's a Delta," or "she's a Sigma Kappa," or "he's a Crow," is putting a label on someone that gives people a chance to assume that person is a certain way because he or she is a member of a specific group. That is just as bad as a member of one of those organizations saying "he or she is a GDI." As soon as people hear a label, they make an assumption about that person. My advice to you Mr. Warren, and to any Greek who is against independents, or any independent who is against Greeks, is to stop worrying about what someone is and try to get to know who that person is. You might even make a few new friends.

Sincerely,
John Rose

Letter From C.C.B.

The Campus Center Board has decided that a response to the letter from the Brothers of Alpha Phi Omega in the last issue of the Albrightian is necessary. It is our desire to truthfully and objectively portray the situation around which such controversy has come about. We have no quarrel with the Brothers of Alpha Phi Omega over ownership of Airbands. We receive no special benefits from hosting Airbands. Like all of the other activities our organization programs, Airbands was held as a service to the Albright community. The Campus Center Board receives no profit from any of our activities—this goes for Airbands as well. Our board did not request to have Airbands given to us; the administration of Albright College decided that, we could best host the activity until the Brothers of Alpha Phi Omega fulfilled their community service requirements and probationary period necessitated by the incidents which occurred at the last Airbands they hosted. It was also stipulated by the administration that there could be the possibility of a mandatory co-hosting of the Airbands. That is to say that, at the discretion of the administration, the Brothers of Alpha Phi Omega might be required to host Airbands in conjunction with the Campus Center Board. These are the facts surrounding the "ownership" of Airbands.

The second set of facts we feel need to be clarified involve the supposed boycott of the past two Airbands by the Brothers of Alpha Phi Omega. Regardless of whether the Brothers of Alpha Phi Omega held a boycott party during the Airbands, it is clear to all that they did not attend the C.C.B. sponsored Airbands or support the Airbands. It does not matter to the members of the Campus Center Board

whether this resulted in an attendance smaller in number by 10 or 600. As was mentioned above, we receive no profit from the activity. Half of the proceeds went to the winners of the Airbands, and the other half went to the Muscular Dystrophy Association. The only people harmed by the small attendance are those who missed the great show put on by the M.C.'s and performers. In addition, if the Brothers of Alpha Phi Omega are allowed to again host Airbands, they hurt themselves by not trying to keep Airbands a fun and exciting tradition at Albright College. Also, though the brothers of Alpha Phi Omega stated in their letter that their actions were in protest to the administration, it is obvious that the administration is not affected in any way by those actions. These actions are more likely to divide our already troubled college environment.

Finally, let me state that the willingness of the Campus Center Board to spend time and effort keeping an Albright tradition alive is an act which should be appreciated by the Brothers of Alpha Phi Omega and our college community. We do not appreciate being attacked for what we consider to be a service to our school, and neither do we appreciate threats of the Brothers of Alpha Phi Omega to plan a "hostile takeover" of an event we are programming out of a commitment to the betterment of Albright's social life. The Campus Center Board would like to thank all those Albright students who attended and participated in Airbands, and those who continually support our efforts.

Sincerely,
Nancy Vandenberg
President of C.C.B.

Greeks Are No Different

To the Editor;

As the old expression goes, "Never judge a book by its cover," let me propose a new idiom: "Never judge a girl/guy by her/his letters." The article that previously appeared in the last issue of the Albrightian evoked many feelings from me. First of all, I was hurt. I am hurt that that is how people perceive Greeks. It hurts me that people assume that one will behave, and think a specific way according to the letters that happen to appear on a sweatshirt. I am writing to rebuke those false assumptions. I am not doing this to pick a bone with the author of that article, but to inform those who may possess those same perceptions that (in most cases) they are not true, unfair or general to all people at Albright. This is because I am extremely concerned with the unity at Albright as well. And I feel that article snatched away even more of that unity. I feel compelled to respond to several false accusations.

First, the notion that we "segregate" ourselves in the cafeteria. If I may say so, I do believe that certain non-Greek people situate themselves in the same area everyday with the same people as well. It is sad, but it's natural. If one were to study the people who compose our "territory", one would notice that several "independents" are eating there as well. The breakfast incident shocked me. However, I am quite sure that there is an explanation for this and was most likely misinterpreted. I can't see anyone, Greek or non-Greek, who would set out to make someone else cry. The author questioned those that once were friends with him that now no longer say "hi". My turn: "Why do people who I used to be friends with not say hi to me because I went Greek?" People assume that

wearing letters across my chest is going to change me—that hurts.

To imply that we join sororities or fraternities to get drunk and pass out is asinine. By no means am I going to say that no Greek member ever passes out—but can that not be applied to "independents" as well? People are not aware of the work and dedication that is involved. It is not simply a social organization. It involves scholarship, high standards, and service activities also. Until one is involved, how can one make an informed statement? As far as mixers go...yes, for maybe two hours on a weekend, and sorority and a fraternity will have a closed party. However, they always open up to everyone later. Every party thrown on the weekend by fraternity members is open to Greeks and non-Greeks alike.

Finally, the most hurtful accusation was that we are not "concerned with the rest of the population." Whoa!! Wait a second. We are represented in nearly every organization on campus. Everything from Student Government to Lion Diplomats to drama to sports. Yes, I am an Alpha Delta Pi, but I am also a Domino Player and a POP. I have always been an involved student. Most of the girls I live with and am good friends with are not in a sorority. And so what if they are or aren't? I pick friends according to who they are and not what they are. I do believe in unity. I chose to join a sorority. It happened to be the right decision for me. I am not telling everyone they must do it. I don't condemn the author for not going Greek. However, please respect my choice in deciding to do so. Unity begins when stereotypes are demolished.

A concerned sorority member,
Peg Nowak

A Fond Farewell to Albright

To whomever seems to care,

I am transferring to another school in the Spring of 1993. I have decided to write this article for two reasons. The first reason is that as great of a rumor mill we have around here not everyone knows I'm leaving. The second reason is to discuss some current hot topics here at Albright. If anyone out there desires to write a rebuttal go ahead. I just would like to mention some items that are on the minds of many students whom I've talked to lately.

The first topic will be the food in the dining hall. When I came here as a freshman (yes I was a freshman, not a first year student), I practically raved about the food. It was never Mom's home cooking but it was very good compared to other colleges' food. This year I feel the variety and quality of the food as a whole has decreased. Maybe I'm wrong but I assumed the replacement of nice tablecloths by less expensive ones was to devote more money to the food that we eat. The only improvement I've seen is in the sauce at the pasta bar. No, I did not say the pasta bar as a whole, just the sauce. The pasta is still overcooked. Possibly a dash of salt, some cooking oil or maybe even some of that new sauce could be added to the water when cooking the pasta. It helps to avoid the formation of a "pasta ball". I think the addition of four more cereals is a nice

gesture. On the other hand, did anyone notice the massive increase in consumption of cereals was at lunch and dinner? Cereal is a breakfast food or an occasional alternative to regular meal; I know people who eat cereal at almost every meal because nothing is edible.

As a brief note I also request that the Albrightian staff stop using the Top Ten lists until there is a glimpse of humor in them.

The forums offered by the administration are a nice gesture but I consider them to be of very little help. The students who attend these forums are active on this campus. Some of these students may complain about certain policies but that is a form of action. The administration must realize that the body of students not attending the many functions and activities offered are the students who have the most problems with the school; the biggest problem being apathy. Stop by the student rooms. Swing by a dorm or a suite and meet the students in their own setting; give them a chance to talk one on one about the problems they see.

My final topic is on a recent editorial in The Albrightian, (11/20/92 - Albright Unity). As a note to any unknowing person I consider myself non-Greek; I am NOT a G.D.I. I feel this term is in itself a form of segregation by both Greeks and independents.

So where do I sit for meals? I sit where

the largest group of my friends sit. This happens to be with a fraternity. The reason people eat dinner with that family is because these are the people closest to them. Normally you would not dine with people who did not like you. Any student may eat wherever he or she wants, but there may be personality clashes and this is part of the real world. The incident referred to in the dining hall with the unexpecting freshman may have been misinterpreted. Even if it was not, these upperclass girls should not be classified by their sorority. This is a form of in-group/out-group stereotyping. The Greek system is comprised of numerous individuals joined together by common bonds.

There is also reference to members only mixers; I attended something similar last year. It was called the WXAC barbecue, staff members only. All organizations have members only events and this the reward for joining. Anybody can organize a party for the students. These parties may often be classified by the fraternity or sorority in which the residents are members but that is only because it's simpler than mentioning all the names. Unless this is a group function (which I already discussed) the parties are most often open to anyone.

I would also like to point out a belief I have, it is not proven fact but it makes sense. Alumni return to their alma mater because of

a connection to it. For the first few years out of college the recent alumni still maintain friendships with current students. After four or five years alumni must maintain some connection. The Greek connection is one where alumni can return and view the progress their organization and the school have made. I don't see many people driving out to Albright for the hell of it and staying at a hotel. These alumni need a reason i.e. homecoming, alumni wedding or to visit their old fraternity or sorority.

The idea of a freshman/transfer dorm was not a wise one. This is a school where students of all years can be friends. I do not know if this was planned or if it will be continued but I would not suggest it. This is not the cause but may be a factor in the lack of campus unity also.

My next topic is that of airbands. I agree with the brothers of Alpha Phi Omega for the most part. The administration should not have taken away their airbands. I also agree with some of their reasons for lack of recent attendance (11/20/92 - Place The Blame). I myself had a big test the next day and although some close friends were in the airbands I could not take time out for four acts. I do not think there was a lack of attendance due to agreement and support of the A-Phi-O's.

It seems as though Albright has some serious work to do.

Sincerely,
Brian Prout

ENTERTAINMENT

Giant Catepillar Smashes Tokyo: Film at 11

by Roger Harkavy

On December 1st, as part of Albright's International Film Series, one of the most highly-acclaimed movie masterpieces graced the screen of the Klein Lecture Hall.

I'm talking about *Mothra*, the Japanese rubber monster classic, directed by Inoshiro Honda in 1961.

The plot is simple. Survivors of a shipwreck are found on an island with high radiation levels and returned to Tokyo. They undergo days of interrogation about how they survived the post-nuclear test environment. "The natives gave us juice," they finally reveal. Their curiosity piqued by this incredibly detailed testimony, an international team of scientists head toward the island to investigate. Before they leave, however, a chubby reporter stows away on board to provide some needed comic relief.

On the island, they find 6-foot high slime molds, man-eating plants, and strangely enough, two tiny twins who are portrayed by cleverly disguised Barbie dolls in the long shots. The natives of the island don't like the scientists manhandling the twins, though, and they leave them there, bringing their wild stories back to Japan.

But evil is afoot. Realizing the profit potential for building a musical show around the twins, sinister non-Japanese scientist (mostly Americans and Russians, *shock*) return to the island and kidnap the twins, slaughtering most of the natives in the process. To retrieve the twins, the natives awaken the greatest latex caterpillar in movie history: *Mothra*!

What happens next? Oh, the mandatory scenes follow with *Mothra* wrecking most of Tokyo while the entire Japanese army expends all of their ammunition trying to take him out. Even borrowing super radar-laser cannons from the Americans doesn't help, especially after *Mothra* cocoons himself and emerges as a giant moth (hence the name)! Eventually the goofy reporter and his cohorts figure out that *Mothra* has a thing for cathedral bells in the afternoon, and they must retrieve the twins and give them back to *Mothra*. Of course, there's a happy ending, and somehow, amid the carnage and destruction, the protagonists manage to cheer for *Mothra* as he flies off into the sunset with the twins. Apparently the complete destruction of two cities is small potatoes for the characters of this movie. Or maybe they were just glad that *Godzilla*, *Rodan*, and *Ghidrah* didn't show up as well.

Here's the lowdown:

One giant caterpillar. One giant cocoon. One giant moth. Two tiny twins. Two giant nuclear-powered flashbulbs on trucks. A plethora of toy cars, army men, helicopters, and buildings that get smashed. Kung fu. Kid fu. Fat fu. One camera disguised as a lighter. And the best song and dance numbers you'll ever see from two one-foot tall twins locked in a bird cage.

So even if you missed this integral part of the Albright Experience, go to your video store and check out a copy. You'll find out that sweaty Japanese guys rolling over toy tanks in rubber monster suits is still a viable entertainment medium in this day and age.

Dracula: The review we've all been waiting for

by Kimberly Sobjak
Entertainment Editor

As a follow up of my last article, this is a real review of *Dracula*. I'm sure by now, most people who wanted to see it have seen it. I do understand that a lot of other people were in my predicament of being turned away from shows. With a little bit of persistence, and a whole lot of driving, it is possible to finally see it. I am living proof.

I really did not know what to expect, but when I entered the crowded theater at four o'clock in the afternoon, I realized that there were a lot of people who were dying to see *Dracula*. There is no getting around the fact that *Dracula* is a romantic love story. Any way you slice it, it comes up love. This may make some moviegoers cringe, especially the under twelve crowd. A few minutes into the movie I realized that this movie had the perfect balance of blood and love. The bloody parts for the anti-love audience, and the lovey dovey parts for those interested in a horror film with a heart.

I am not a film expert, but the plot, the characters, the direction, and the

cinematography were all excellent (in my inexperienced opinion).

Before I saw *Dracula* I was asked what the AIDS message was and I had no idea. Even after I saw it I didn't see a connection. However, after thinking about it for a while there was a very clear message. The more people *Dracula* bit, the more people were infected with the mutated blood cell that made them need more blood. The situation got worse and worse until all the people in Transylvania were either infected, or aware of the situation and wore crosses. This is when *Dracula* moved to London for some "fresh blood".

This movie had a clean cut answer to the epidemic, by driving the wooden stake through *Dracula*'s heart. His death resulted in the recovery of everyone else. Unfortunately, a cure for AIDS is not that easy. I do not know if the AIDS parallel is a coincidence, or if it was planned, but it definitely makes one think.

All in all I thoroughly enjoyed the movie, and I am really glad that I finally got to see it. If you haven't seen it, don't waste any time. Head on down to the closest movie theater, and suck it up.

CCB's Christmas Double Feature

It's a Wonderful Life & White Christmas

WXAC DJ Spotlight

HONEYDRONE

by DJ Pat Rands

Heard Mondays from 8 until 10 pm.

Listen and fish your ear through the drear. Like an underground crap shot without horror or fear, my dad could listen, so could yours.

C'MON AND ZOOM

by DJ Caleb Smith

Heard Mondays from 12 until 2 am..

Freakouts of the spiritual type with nice melodies.

IS THERE ANYBODY OUT THERE?

by DJ Helen McGovern

Heard Mondays from 2 until 4 am.

If a radio station broadcasts and nobody listens, does it still play great music? From 2-4am Tuesday mornings on WXAC, Helen and her vivarim injected friends prove that it does. So listen and call in with requests for your favorite

collegiate camouflage

D E N Y D R E I R O L A C M W
E A M A A F T N C N L O F A A
G N P D N E U K E O E A O R N
T G I A E O N W N W N M K G T
O A C R E F I A T G T I U I S
N C G A M M T S N L O B L U
K E W F A T H T U O N U N L R
D N K N O H R N M L C C H I A
Y C R E W O P E S R O H S M E
U M H M M T E M U W V L R Y
E R A T C E H P L F A T E E T
N Y D N R K N O O N T P A R H
A N C O U L M I F U M A G O G
F O O M U B Y B L A N F U R I
T R N O T G N O L G E D E C L

Can you find the hidden units of measure?

ACRE
AMPERE
ANGSTROM
CALORIE
CENTURY
COULOMB
CUBIT
DEGREE
DYNE
FARADAY
FATHOM
FOOT-POUND
FURLONG
HECTARE

HORSEPOWER
KILOMETER
KNOT
LEAGUE
LIGHT YEAR
LONG TON
LUMEN
MILLIGRAM
MINUTE
MONTH
NEWTON
RADIAN
REVOLUTION
WATT

Jazz Band Livens Up Campus Center

by Katherine Ritz

The Campus Center was alive with the music of the Albright College Jazz Band on the evening Monday, December 7, 1992. Directed by Mike Eben, the band played music spanning a variety of styles from the big band era.

The Albright College Jazz Band is in its first year and is exploring many avenues of style. Key to the bands performances this year are the many solo parts in the musical selections. The first selection, Now is the Time featured soloist Crandall Shank on trumpet. Live at Five, selection number two, featured trumpet player Eric Heller as a soloist. Following this selection was Sidewinder featuring soloists Eric Heller on trumpet and Brian King on trombone. When Sunny Gets Blue, a ballad the band has been working on, featured soloist Sarah Sharp on alto sax. Mercy, Mercy, Mercy offered the members of the band the opportunity to do some improvisation featuring improvisational solos by Crandall Shank (trumpet), Sarah Sharp (alto sax), Lisa Strum (trombone), Tina Clentimack (bari sax), Mike Miller (trombone), and Eric Heller (trumpet). Sarah Sharp was also the feature soloist in the selection A Little Minor Boogie. Dancing Men featured a lengthy solo by drummer Bob Trout and a solo by Mike Eben on tenor sax. The final selection, Get It On featured the entire band.

The band members are Sarah Sharp and Kirk Beideman on alto sax, Mike Eben on tenor sax, Tina Clentimack on bari sax; Eric Heller, Crandall Shank, and Andy Smith on trumpet; Brian King, Mike Miller, Lisa Strum, and Kristel Kemmerer on trombone; Wendy Beideman on piano, Ken Kemmerer on bass and Bob trout on drums. The band is always looking for members and encourages all students to join.

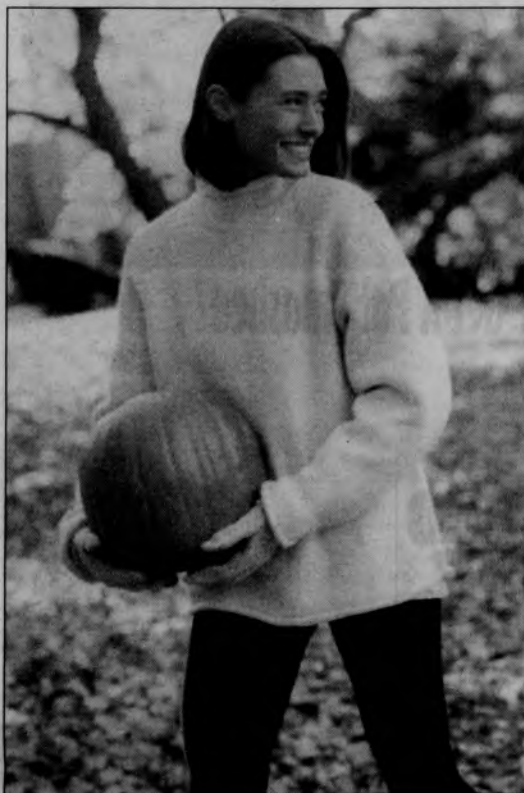
Send A Personal

Everyone Loves The Personals!!

Send one to your friend, boyfriend, girlfriend or professor!!

They're Free!! They're Fun!!

HOLIDAY SAVINGS
Bring this ad and receive an additional
20% off the already reduced price
of our classic wool rollneck.



J.CREW
FACTORY STORE

810 Windsor Street
Reading, PA (215) 378-5106

*Intermediate markdowns may have been taken. Offer valid while supplies last.
Not valid with any other offer.

Classifieds

Notice

The Albrightian reserves the right to release the names of individuals who place advertising in The Albrightian.

The decision on whether to release this information shall be made by the editors of The Albrightian.

The purpose of this policy is to discourage the placement of advertisements that may be cruel or unnecessarily embarrassing to individuals or organizations.

Help Wanted

SKI - Intercollegiate Ski Weeks, ONLY \$209. Includes: 5 DAY LIFT TICKET/5 NIGHTS LODGING (MOUNTAINSIDE CONDO)/5 DAYS INTERCOLLEGIATE ACTIVITIES (Drinking Age - 18), Sponsored by Labatt's, Molson and Mt. SUTTON, CANADA (Just across the Vermont Border) Group Leader Discounts. Jan. 3-8, Jan 10-15 & Springbreak '93. Call Ski Travel Unlimited. 1-800-999-SKI-1.

Personals

Crandall and Craig,
Have a little leak lately?
-Al

Hay Mohn Hall 2nd floor,
Are you up for some wet and slippery hall
fun?
-Seniors of the 2nd floor

Chris,
Since when does a person need a car to
get from Mohn Hall to Alumni?
-CC&A

T-
Who'd have thought I'd have had a single
for my senior year.
-G

John,
FUMBLE!!
-Men of Mohn

Chris,
What does FORD mean?
-C

Craig,
It's still better than that foreign piece of -
-C&C

Chris,
You have the MIKE syndrome, therefore
from this day on you will be known as
MIKE!
M.o.M.

Anja,
I like it when you turn me on.
-Lowenbrau

Gail,
PLEASE!
U NOWHO

Hay B.W.
Would you like to learn S&M? (And don't
be a loser.)
-Bruised

Catwoman,
I'm ready to scribble! But I'm still
waiting to be taught something, for that is
why I came to college (well sort of)
-VOLF

T-
Since 4 was too easy, the stakes have
been increased to 5 in one night
-Senior Men of Mohn

Chou-Chou,
You were right, it was possible.
-Red & willing

Gail,
for 24, is that a vending machine? I
guess I should have stopped sooner?
-Your luv pony

Ben,
Beware! It's coming after you! Soon!
-Torture

Christina,
When you want a real man, come see
me.
-223

Suite D-200,
Let's go modelling.
-Rebecca

Al,
You need a real haircut if you gonna
headbang!
-CCC

Al,
9 months and counting.
-Desperate

Moir & everyone,
Experience the excitement, party with
the real pros!
-220,221,223

Craig,
I was gonna send you a personal but
I haven't spoken to you in so long that it
would fill up the whole page.
-Gail

Curlylocks (S.G.),
How good was last weekend?
-Craig

Rebecca,
I really am sweet and innocent! but can
I borrow the whip?
-virgin

Rebecca,
I want to hold your leash!
C

220,
The pile has begun again. We must fill it
this time!
-CCC&A

Black Bear from B-3,
I need to be on the meal plan for next
semester. Think you can arrange that?
-Catwoman

UNOWHO,
Forget it!
-Gail

Heidi,
Was it worth it?
-Don't think!

Rae,
One more semester.
-G

Virgin,
Yeah, right! I rent the whip by the hour.
-R



Ever Get A Pal Smashed?

WASTED YOUTH.



ONLY YOU CAN PREVENT FOREST FIRES.

A Public Service of the USDA Forest Service and your State Forester.

SKI

**3RD ANNUAL
INTERCOLLEGIATE SKI WEEKS**

MT. SUTTON, CANADA
(Just across the Vermont border)

ONLY \$209

Party in the Snow!
Includes:

5 Day Lift Ticket

5 Nights Lodging
(Mountainside Condo)

5 Days Intercollegiate Activities
Sponsored by Labatt's, Mt. Sutton
and Molson

Legal Age for
Alcohol is 18

Group Leader Discounts

Jan. 3-8, Jan. 10-15 & Springbreak '93

CALL SKI TRAVEL UNLIMITED

1-800-999-SKI-9

THE SEARCH IS NOW ON!
"MISS PENNSYLVANIA USA" PAGEANT
NO PERFORMING TALENT REQUIRED

If you are an applicant who qualifies and are between the ages of 18 and under 27 by February 1, 1994, never married and at least a six month resident of Pennsylvania, thus college dorm students are eligible, you could be Pennsylvania's representative at the CBS-nationally televised Miss USA® Pageant in Feb., 1994 to compete for over \$200,000 in cash and prizes. The Miss Pennsylvania USA® Pageant for 1994 will be presented in the Grand Ballroom of the Palace Inn, Monroeville, Pennsylvania, March 12, 13 and 14, 1993. The new Miss Pennsylvania USA® along with her expense paid trip to compete in the Miss USA® Pageant, will receive over \$2,000 in cash in addition to her many prizes. All girls interested in competing for the title **must send a recent snapshot, brief biography, address, and phone number to:**

Kimmarie Johnson
Miss Pennsylvania USA®

MISS PENNSYLVANIA USA® PAGEANT
c/o TRI-STATE HEADQUARTERS - DEPT. CB
347 LOCUST AVENUE
WASHINGTON, PA 15301-3399

Tri-State Headquarters Phone Is 412/225-5343

MEMBER Application Deadline Is December 19, 1992

Miss USA® is seen on:

Miss USA® Pageant is part of the family of Paramount Communications, Inc.
Miss Pennsylvania USA® is 'A Carvern Production'

If they accept the charges, you can tell them about ChasePhoneSM. It lets you use your Chase card to make long distance calls at MCI's low rates. And that's just one of the unique ways we'll help make your life a little easier at school.

Should You Get A Chase Card For The Long Distance Savings?

*[Call your parents collect
and see what they think.]*

That's because we've created Chase Student ServicesSM — an entire group of special benefits just for students.

For example, when you take off during Winter and Spring Break, Chase Student Travel will take off with you. In fact, you'll get 5% off the lowest prices you find on air-

fares, train tickets, car rentals and even hotels.

Or, if you're moving off campus, we'll even write a credit reference letter to help you get an apartment.

Best of all, we won't ask you to fork over an annual fee for the first year.

So look in your mailbox around Thanksgiving for an application. Or, pick one up on campus and apply for your Chase card today.

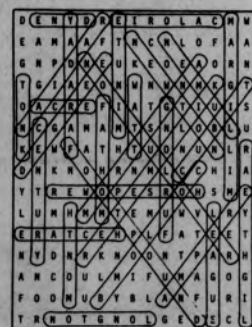
And the next time you call mom and dad, they may actually be happy to hear from you.



*Chase card services and features described are provided by independent suppliers who assume full responsibility for their programs. Card services have some restrictions and limitations. Full details will be provided when you become a cardmember. ©1992 The Chase Manhattan Bank (USA).

calvin and Hobbes

by BILL WATSON



ATTENTION ALBRIGHT STUDENT BODY FOR YOUR INFORMATION PLEASE READ:

SGA meetings are held every Sunday night at 8:00 p.m. in the Campus Center Conference Room.

All are welcome to attend these meetings and to express concerns regarding Albright.

Listed below are the members of SGA, please contact them for any concerns you might have, or call Ext. 7615.

Jason Albert	Box 141	Ext. 6680	F101 North Hall
Joe Barrett	Box 212	Ext. 6749	G-3 Albright Woods
Brandi Berstler	Box 267	926-0468	Leesport
Jerry Gonnella	Box 664	Ext. 6723	C-4 Albright Woods
Mike Hassell	Box 655	Ext. 6718	C-1 Albright Woods
Rob Henderson	Box 665	Ext. 6759	I-1 Albright Woods
Rob Hollenbach	Box 524	Ext. 6148	103 Crowell Hall
Matt Hollowell	Box 745	Ext. 6418	113 Mohn Hall
Kristian Hunter	Box 676	Ext. 6457	304 Mohn Hall
Rich Menseck	Box 1014	Ext. 6718	C-1 Albright Woods

CCB meetings are held every Monday, 9:00 p.m. in the Main Lounge of the Campus Center.

All are welcome to attend these meetings as well to express their concerns or to make suggestions.

Listed below are the member of CCB for Fall 1992, please contact them for any concerns you may have or suggestions with which you would like to make.

Debbie Adams	Box 159	Ext. 6602
Mike Addo	Box 143	Ext. 6729
Dipa Brahmabhatt	Box 208	Ext. 6363
Kieran Daly	Box 441	Ext. 6290
Melinda Fels	Box 494	Ext. 6178
Mike Hassell	Box 655	Ext. 6718
Lauren Herrold	Box 696	Ext. 6691
Jacqueline Jernee	Box 790	Ext. 6616
Tanya Jones	Box 710	Ext. 6767
Steve Kmet	Box 864	Ext. 6319
Brian Moore	Box 1084	373-2289
Janice Park	Box 1146	Ext. 6743
Sharmini Rayer	Box 1264	Ext. 6622
Leslie Rowe	Box 1236	Ext. 6716
Rauna Rowe	Box 1180	Ext. 6716
Bonnie Sherwood	Box 1266	Ext. 6391
Carrie Smith	Box 1277	Ext. 6164
Shane Thomas	Box 1432	Ext. 6655
Nancy Vandenberg	Box 1438	Ext. 6165
Ann Vena	Box 1409	Ext. 6651
Anissa Veshela	Box 1396	Ext. 6185
Dave Warren	Box 1515	Ext. 6287
Jen Wilkinson	Box 1487	Ext. 6180

ALBRIGHT ENCOURAGES PARTICIPATION IN
ALL AREAS OF CAMPUS LIFE!

ATTENTION ALL WRITERS

Lorrie Moore, author of *Like Life* and *Self-Help*, will be visiting Albright's Campus the second week in February. If you would like to arrange a tutorial concerning your own fiction, submit portfolios to Michael Adams (121 Masters Hall) by December 15th.

Lorrie Moore will be giving a reading of stories from *Like Life* on February 15th at 8:00 p.m. in the Campus Center, South Lounge. (It will be an experience event).



SNACKS FOR FINALS

Sunday, December 13th, 9:00-11:00 p.m.
Make Your Own Sundae

Monday, December 14th, 9:00-11:00 p.m.
Nachos/Taco Bar

Tuesday, December 15th, 9:00-11:00 p.m.
Pizza

Wednesday, December 16th, 9:00-11:00 p.m.
Chicken Wings

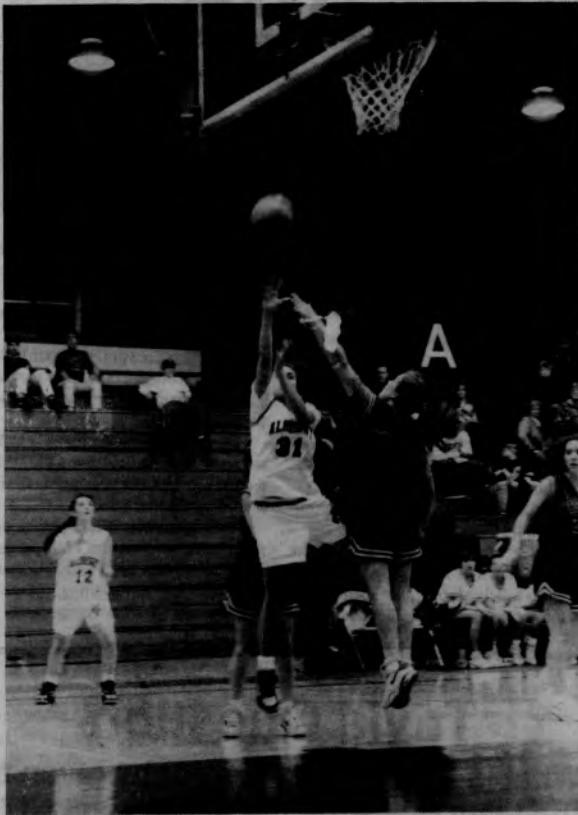
Thursday, December 17th, 9:00-11:00 p.m.
Bagels and Doughnuts

Plus, everynight cereal, toast, and beverages
will be available!

NOTICE: STUDENTS ON LUNCH ONLY PLAN

IF YOU WILL BE ON-CAMPUS DURING INTERIM,
AND WANT TO BE ON THE LUNCH PLAN, PLEASE
COME TO THE CASHIER'S WINDOW TO SIGN
UP NO LATER THAN DECEMBER 11TH. YOU
WILL BE BILLED \$72 AT A LATER DATE FOR THIS
OPTION.

IF YOU WITHDRAW FROM INTERIM BY
JANUARY 7TH, YOUR REFUND WILL BE BASED
ON THE NUMBER OF DAYS ELAPSED. FROM
JANUARY 8TH ONWARD, THERE WILL
BE NO REFUND.



Lady Lions Fight Their Way to the M.A.C. This Year.

photo by Wil Johnson

Don't Live In The Past

In 1992, Basketball is Fast Breakin'

by Mike O'Brien
Albrightian Sports Editor

There has been a big debate recently about which style of basketball is better. The slow, lethargic philosophy of Pete Carril of the up-tempo style of basketball that you see many teams use both in the N.B.A. and N.C.A.A. Even though both philosophies have their positive points, the up-tempo style is better for all of the game of basketball in 1992.

Before taking a side in this debate, you must answer a few questions. First, where was basketball when James Naismith invented it? And where is basketball today? What kind of player does basketball cater to? Finally, besides being just a game, what else is basketball? The answers to these questions will steer you in the right direction.

When James Naismith invented basketball it was a slow, strategic game that took place in a cage with a peach basket at either side of the court. The game was that way because the time limited the game to those guidelines. In 1992, the game has changed for many reasons. The major reason is that the players are more athletic and it no longer is such a strategic game. Athleticism makes up for mental mistakes. Teams are more successful with

athletes who can run fast, jump high and dunk hard. The game has changed according to the time. Athletes have saturated the N.B.A. and N.C.A.A. and teams have no other choice but to play up-tempo style of ball. Basketball in 1992 has grown into an athlete's game. In order to let something run its course, you must let it change with the times! This is what basketball has done in the last century and to play Pete Carril's style of ball would be like living in the past.

Besides being a game, basketball is a business. Businesses must make money. In order to make money in basketball you must sell tickets. The only way to sell tickets is to offer athletes, spectacular plays, and breath taking dunks. You cannot offer this if the slow, lethargic style of basketball is being played. You will please more people with the up-tempo style than if you use Pete Carril's style. Therefore, you would make more money.

Basketball has changed with the times and there's nothing anyone can do about it. The 1990s have ushered in an up-tempo, dunking, jumping, 100 point scoring, offensive style of play. This is also good because it will make teams money. So if you're Pete Carril give up or just let your style of play put you to

Women's Basketball

They could make some noise in the MAC

by Mike O'Brien
Albrightian Sports Editor

This year the Albright College women's basketball team is trying to find the one ingredient which makes winning teams. This ingredient is consistency! The Lady Lions came out of the F&M tournament with a 1-1 record looking to build on it with three out of there next four at the Bollman Center, all of which are critical league games. After some tough losses against divisional foes, Ursinus, Dickinson and Muhlenberg, Albright got back on track with a home win against Widener to push their record to 2-4.

Leading the team this year are senior co-captains Jen Esposito and Connie Grothe. Esposito is a veteran player who possesses exceptional quickness and has used this advantage on the fast break. Grothe is a hard working center, who probably is the team's best threat from three-point range.

Rounding out the starting lineup for the ladies is forward Sue Rehrig and guards Kristen Ruch and Becky Shumaker. Rehrig, a sophomore, is coming off season highs in points and rebounds last week and seems to be getting better with every game. Ruch, another sophomore, is the best pure shooter on the team. Because of her brilliant shooting touch, she will force opponents to play man to man defense against Albright. Shumaker, a junior, is also looked to as a leader on the team. Her steady play from 17 feet in has made her one of the league's premier rebounders.

Janice Johnson heads a list of players who help the Lady Lions off the bench. Johnson has been impressive in her freshman season.

She gives quality minutes at point guard and don't be surprised if you see her in the starting lineup this year. Krista Wissler, a senior, has been solid in her contribution off the bench. She is good for a couple of rebounds, especially on the offensive end. Against Widener, Wissler owned the offensive glass most of the second half. Other reserves for the Lady Lions are sophomore Kim Freeman, and freshmen Lisa Calvert, Niki Hawkins, and Michelle Treiber. Freeman looks to offer some much needed size to the Lions in the future. Hawkins has contributed some good minutes for the team and Calvert has shown she is an offensive threat. Treiber, like her male counterpart, does not own a tremendous amount of size but makes up for it with her relentless hustle.

The women's basketball team will open some eyes in the M.A.C. this year. There was talk in the pre-season that they will have to operate under a shadow cast by the men's team. So far, that has not been the case. The Lady Lions are set to be the classic over achievers of the league. With their talent, leadership, and experience, Albright should have a successful season under head coach Sally Miller and assistant coach Larry Kunkle.

Observations

- Rumor, you must be recruited to play baseball at Albright. I didn't know we were in the Associated Press pre-season Top 10 poll.

- Why press full court in women's basketball if there is no 10 second violation?

- What would you give to be Barry Bonds?

- The only good thing about Pete Carril and his Princeton style of basketball is that no major basketball program will use it or even take it seriously for that matter!

Quote of the Week

"I think he'll eventually have the credentials to back up everything he thinks of himself."

- Jack McCloskey, Minnesota
Timberwolf General Manager
on Christian Laettner

Answer to the Trivia Question:
Peter A. Carlesimo
Pre-Season N.I.T. Trophy

Did You Know

Shaquille O'Neal was the first rookie ever to become the player of the week in his first week in the N.B.A.

The Sports Page

Coming Up In Albright Sports

Men's Basketball

12/12 Dickinson H 8:00
12/28 Drew at O.C. Tourn. 6&8
12/29 G'Burg/Scranton 6&8
1/5 Swarthmore H 8:00
1/9 King's A 8:00
1/11 Scranton H 8:00
1/13 Allentown H 8:00
1/20 Juniata A 8:00
1/23 Elizabethtown H 8:00
1/27 Lycoming A 8:00
1/30 Messiah A 8:00

Swimming

12/12 Lycoming H 1:00
1/9 Scranton A 2:00
1/16 Lebanon Valley A 1:00
1/23 Juniata A 1:00
2/4 York H 7:00

Women's Basketball

1/7 W. Maryland H 7:00
1/12 Swarthmore A 7:00
1/14 Delaware Valley H 7:00
1/16 Haverford H 6:00
1/18 Elizabethtown H 7:00
1/20 Wilkes A 6:00
1/23 Ursinus A 6:00
1/28 Swarthmore H 7:00
1/30 Messiah A 6:00
2/2 Susquehanna H 7:00
2/4 Widener A 7:00

Wrestling

1/13 Moravian H 1:30
1/16 Susquehanna H 1:00
1/20 Elizabethtown H 7:00
1/23 York Tourn. A 11:00
1/26 Messiah A 7:00

Badminton

1/16 Bryn Mawr A 1:00
1/23 Swarthmore A 10:00
1/25 Academy of New Church H 7:00
2/4 Bryn Mawr H 6:30

MAC Realignment Albright Enters New League

by Lynne Gracey

Albright College's athletic department is gearing up for the Middle Atlantic Conference (MAC) league realignment in Fall 1993.

Nancy Jo Greenawalt, associate athletic director at Albright, said the league realignment occurred because schools wanted to compete against the teams "geographically closer to save money and class time." However, she said the most important reason for the change was "some schools saw themselves as little ivys" and wanted to be in their own conference.

The realignment decision was made by the athletic directors of the colleges and their presidents earlier this year.

Greenawalt said, "College presidents are taking a more active role in athletics, and pushed for this change."

The realigned league has three divisions: Centennial, Commonwealth and Freedom. The original league structure of the MAC was divided regionally: Northeast, Northwest, Southeast, Southwest.

Albright College is in the Commonwealth

league with Elizabethtown, Juniata, Lebanon Valley, Messiah, Moravian, Susquehanna and Widener.

The realignment means Albright's women's teams will compete against the same schools as the men's teams.

Greenawalt said she had "mixed feelings" about the realignment, because although the intention of the realignment was to compete against schools closer to home, this is not the case. Therefore she thinks it "will have a negative effect on the women's program" because the Southeast division that the women had been competing in was competitive, good for travel and similar academically.

Lynelle Harbold, junior nutrition major and member of the women's volleyball and track teams, is similarly wary of the realignment. "I think it's going to hurt us, because travel time will cut into class schedules and not everyone can study on a bus." She also mentioned her dislike for having to compete against Juniata, as the college is three hours away.

Have a Very Merry Christmas Break

Badminton It's a Real Sport

by Lynne Gracey

Out of breath and drenched with sweat, Kristin Phillips relaxes after a tough practice at Albright College. For her, preparing for the upcoming badminton season is serious business.

Phillips, a second year member of the nationally ranked women's badminton team at Albright, is frustrated with the negative recognition that her game receives.

"I think it's wrong that we (Albright's badminton team) are not given respect. People think that badminton is only a picnic sport," Phillips said.

Because of this stigma, the future for college badminton is tenuous. Although the game has achieved olympic sport status, badminton programs are diminishing in

colleges.

Many college campuses are dropping their badminton programs because of budget deficits and an increase in costs, according to Nancy Jo Greenawalt, badminton coach and associate athletic director at Albright.

"Our culture does not recognize badminton as a competitive sport like football and basketball, therefore it is not treated with the same respect," Greenawalt said.

For the colleges, dropping a badminton program is not considered a major loss, as there is a lack of spectator and media interest, according to Greenawalt.

Although Albright is not planning to get rid of its badminton team, Phillips' hard work and practice may be in vain. As badminton programs are diminishing, players, like Phillips, will have few competitors.

Trivia Question

What is the name of the trophy given to the team that wins the pre-season NIT?

Answer from last issue: Dan Marino

Answer to this question can be found in the Quote of the Week Box!

Albright Swim Team Moving Up In The World

by Spencer Finck

The Albright Lions swimming team continues to grow in their second season as a varsity team. After a season opener tournament that featured mixed men/women teams (against such teams as Juniata, Susquehanna, Scranton and Widener), the Lions started to show signs of maturity. On November 14, in a non-conference meet against Dickinson (at Carlisle), the Albright team broke several records.

In the men's side, team captain Matt Austin won the 100-yard butterfly in 59.76 seconds and helped the 400 freestyle relay team set the school record of 3:38.15. First year students Joe Collopy and Andy Smith set school records, Collopy in the 100 breaststroke (1:09.69) and Smith in the 100 backstroke (58.12). Smith also was part of the record breaking 400 freestyle team with Austin, Jay Levin and Charlie Ginex.

The women's side also did well. Karen Brogan set Albright records in the 200-yard freestyle (2:11.14) and the 500 freestyle (5:59.15). The 400 medley relay team, composed of Brogan, Joanna Christman, Maureen Dundas and Becky Dohner, also set a school mark (4:38.56). First year student Juliet Ferri set a school record in the 1000 free (13:22.05).

In the next meet, against Western Maryland in front of a home crowd, Albright again broke records. Collopy again set a school record in the 100 breaststroke, lowering his mark to 1:07.46. Brogan also broke previous records, both in the 100 freestyle (59.27) and the 1000 free (12:04.4). With those marks she qualified for the league championships in both events. Meanwhile, teammates Andy Smith and Charlie Ginex were hard at work breaking the 200-yard freestyle record (1:53.02) and the 200 individual medley (2:18.35), respectively. Smith and Collopy, with these marks, also qualified for the league championships, as did captain Austin in the 100 butterfly (which was one of his three victories in the competition). Austin, Smith, Ginex and Shane Thomas teamed up to break the Albright mark in the 200 medley relay (1:49.12). Maureen Dundas, captain of the women's team, qualified for league championships in the 100 butterfly and the 100 breaststroke.

Finally, the Albright Lions broke some more records against Widener in a meet held at home on December 5. Brogan broke the 50-yard freestyle mark (27.43), Dundas the 200 individual medley (2:32.06), Becky Dohner the 200 butterfly (2:38.64) and Joanna Christman the 200 backstroke (2:36.42).

Although the team has not yet won a tournament this year, the many records suggest that this will not go on for long. When the Spring season starts, hopefully the team will continue to break records and excite the Albright Lion fans.