

# LIONS IN THE RANKS

Because of increasing demand from both civilian and service sides, Lions in the Ranks will publish changes in address as they arrive from now on.

HERB VOGT'S new address is: a/c Herbert Vogt 13151309  
A. A. F., P. F. S. (Pilot)  
Sqd. E, Group XI  
Class 44G, Sec. 142  
Maxwell Field, Alabama

Herb sends his apologies for having the change.

This week we welcomed JOHN HERTZ and SAM SEHL. John had many interesting tales to tell.

Attention LTS. BOARDMAN and ESHELMAN: CPL. SAM SEHL dropped by Albright-way November 8th and said a few words to the effect that two certain officers whose names are mentioned above have gotten kinda snooty since obtaining those gold bars and don't write to lowly non-coms anymore. He has given us permission to print anything, just so the ultimate result will be a letter or two in his direction. Address all communications to:  
Cpl. Samuel Sehl  
1st Reporting Co.  
576th S. A. W. Bn.  
Drew Field, Fla.

The most recent recruits are ALOIS MAKOVSKY and ROBERT MATTSON. These two A. P. O.'s now serve in the Army. Al is in the Medical division at Camp Chaffee, Arkansas, and Bob reports at Fort Meade today, Nov. 16.

PVT. ROBERT MERKEL is nearer home now. He's been traveling "pull-entry" since last February 17. The Army is making an engineer of him now.

Pvt. Robert Merkel, C. D. 3395 S. U., A. S. T. P., University of Pennsylvania, Philadelphia, Pa.

Bob was a corporal but until his present training is completed, he will remain a private.

PVT. DONALD J. BLACKMORE greets us from Camp Fannin, Texas. "You know . . . I used to get tired walking from one building to another on campus or climbing the A. P. O. stairs, but this ambulating infantry gives a man something he'll remember. It was a jolt to me to learn that a jeep isn't a part of every soldier's personal equipment . . . My best regards to all those I feel I still know at Albright. My advice to Freshmen: they've got a lot to learn, but they'll do just that at college." You are entirely welcome for **The Albrightian**, Don. We're glad you enjoy it.

ENSIGN ADA E. GOSSLER sends thanks for **The Albrightian**. "I'm glad to see that the Domino Club is still hitting the front pages!" Please say hello to the faculty for me; they're about the only ones left on campus from my time!" Hello, Faculty.

LESTER D. ALSPACH and JAMES F. BRUSCH are air cadets at Maxwell Field, Alabama. They are beginning the third phase of their training as pilots in the U. S. Army Air Forces' expanding program. Les and Jim will receive nine weeks of (Continued on Page 3, Col. 1)

## Alchemists Formulate Program for 1943-44

Definite plans for the year's programs will be made at the next meeting of the Alchemists Club on December 8. Led by Walter Koch, president, and Harry Hantzes, secretary-treasurer, the club plans to be more active this year than formerly.

The program committee, with Paul Mattson, chairman, James Farr, and Dorothy Leiby, has suggested field trips to local industries for observation and has planned discussions and papers dealing with various timely phases of chemistry.

The social committee of the club is composed of Ruth Plowfield, Mae Jean Picking, and Marie Bonner.

# The Albrightian

VOLUME XL

READING, PA., NOVEMBER 16, 1943

No. 9

## "Y" Worship Seminar Considers Leadership In Discussion Tonight

Rev. Lester L. Stabler Directs Study Group in Second Of Planned Series

The first of a series of five seminars on "Worship" was held in the "Home Ec Corner" last Tuesday evening at 7:30 o'clock. Purpose of these seminars is to prepare students to be better able to lead worship services. The seminar was led by Rev. Lester L. Stabler, Director of Public Relations, and centered about the theme "What Is Worship?"

Worship is communion with God. It is an experience involving praise of God, a feeling of the nearness and awareness of God, a feeling of rever-



Rev. Lester Stabler

ence for and a need of response to the Eternal. We should desire to worship in order to help our fellow men. It is through worship that we find the worth of people and of God. These were the basic ideas discussed by the study group.

Martha Fredericks and William Lippert were the worship leaders.

Next week Rev. Stabler will again lead the seminar group in the study of "The Leadership of Worship". Fred Clewell and Ruth Ritzman will be the devotional leaders.

## PAT Rush Dinner Held For Freshman Guests

The Phi Alpha Tau Sorority held its annual rush dinner last night at seven p. m. in the Colonial Room of the Abraham Lincoln Hotel. Before entering the Colonial Room, the guests were received in the English Room by Prof. Ruth Shaffer, sorority advisor, Lillian Schwenke, president, and Irma Peoples, vice president.

The table decorations were large yellow chrysanthemums. Later a flower was given to each guest as a favor. After dinner several selections were rendered by the Phi Alpha Tau sextet, consisting of Betty Claire Voeste, Joyce Moyer, Margaret Hendricks, Emma Cora Hafer, Marie Bonner, Betty Rex, and Margaret Shepperd.

The committee in charge of place cards included Geraldine Bowker, chairman, Margaret Hendricks, and Mary Eschweg. Emma Cora Hafer was in charge of entertainment.

The guests included members of the freshman class and Dean Mary Jane Stevenson, Prof. Ruth Shaffer, and Administrative Assistant Anna R. Benninger.

## Albright W.S.S.F. Quota Set at \$150; Drive Opens With Chapel Program

The World Student Service Fund drive this year is a part of the Nation War Fund Drive. Each year this drive operates only on college campuses. Albright college is again going to try to do its part in this worthwhile drive. W.S.S.F. has set its goal this year at \$250,000, and the goal of our campus is \$150.

Janet Luckenbaugh and William Lippert are acting as co-chairmen for Albright, Mae Jean Picking is in charge of receiving contributions from the faculty, and Geraldine Bowker is chairlady of student solicitation. She will choose student solicitors to aid her. Paul Mattson is general treasurer of the campaign.

Emphasis of the W.S.S.F. drive on campus will be shown by posters which have as their theme: "Covering the World Through W.S.S.F." On Tuesday, November 16, a college assembly is being planned with the program consisting of a motion picture on various phases of work done by the W.S.S.F. throughout the world. The W.S.S.F. helps students all

over the world, including student prisoners of war. Albright's own Bob Starr, who is now a prisoner of Germany, will be helped by the W.S.S.F.

Today throughout the world many students are refugees; some have been interned, some dispossessed of all they had. Through the W.S.S.F. these students will be helped and will



be given the opportunity to continue with their studies despite the war going on about them.

Each dollar contributed to this drive will help fellow students. Just one dollar will supply the notebooks and paper required by a prisoner of war for six months.

## Daystudents' Fourth Annual Dance To Mark Fall Rendezvous Friday

The fourth annual combined day-student dance under the new name, "Autumn Rendezvous" featuring music by the Royal Manhattans will be held in the Berkshire Ballroom this

Friday, November 19, from 9:00 to 12:00.

Since the social activities on campus have been limited this year, the daystudent organizations have opened the affair to the entire student body. In previous years the affair had always been formal, but complying with war-time difficulties, arrangements are definitely on the informal side. Professor and Mrs. Wayne H. Kinsey and Professor Richard N. Rhoda will chaperon.

It is important that all tickets be purchased by Thursday noon from any member of the committee; namely, Lucille Griswold, Marie Bonner, Jean Ann Gaul, Donald Reinhold, and William Miller. The price is \$1.87, including tax.

Report all incidental illnesses such as a beginning cold or disturbances of the digestive system. Above all, report promptly all abnormalities of the abdomen.

Be sure you avoid yourself of this service, at any time it is needed.

Emergencies should be reported promptly at the following places: switchboard during the day from 8:30-6:00, from 6:00-9:00 call the college number and report to the one who answers, who then will give further instructions or report direct to the one who is in charge of the Dispensary at any time of the day or night.

Report all incidental illnesses such as a beginning cold or disturbances of the digestive system. Above all, report promptly all abnormalities of the abdomen.

Be sure you avoid yourself of this service, at any time it is needed.

Emergencies should be reported promptly at the following places: switchboard during the day from 8:30-6:00, from 6:00-9:00 call the college number and report to the one who answers, who then will give further instructions or report direct to the one who is in charge of the Dispensary at any time of the day or night.

Report all incidental illnesses such as a beginning cold or disturbances of the digestive system. Above all, report promptly all abnormalities of the abdomen.

Be sure you avoid yourself of this service, at any time it is needed.

Since the social activities on campus have been limited this year, the daystudent organizations have opened the affair to the entire student body. In previous years the affair had always been formal, but complying with war-time difficulties, arrangements are definitely on the informal side. Professor and Mrs. Wayne H. Kinsey and Professor Richard N. Rhoda will chaperon.

It is important that all tickets be purchased by Thursday noon from any member of the committee; namely, Lucille Griswold, Marie Bonner, Jean Ann Gaul, Donald Reinhold, and William Miller. The price is \$1.87, including tax.

## Idea of God is Theme Of Philosopher's Talk

"The Idea of God" is the subject of a paper to be presented by Geraldine Bowker at the Philosophy Club meeting on November 17, at the home of Gretchen Bieber, secretary-treasurer of the club. Miss Bowker's discussion will include the opinion of contemporary philosophers in addition to her own evaluation on the subject. The club will also make plans for an "open meeting" in December.

## "Skunk Day" Celebrants To View Struggle of Hockey Titans Today

Today is Skunk Day! And Albright College, uniquely unique, is expected to turn out en masse for Skunk Day's major event, the earth-shaking encounter between the All-Brave-and-Confident-Women-Hockey Players and the Never-Say-Die-Field-Hockey-and-Social-Club, scheduled for 4:45 p. m. on the historic turf between the Merner-Pfeiffer Hall of Science and the School of Theology. The match, originally scheduled for this past Friday, was postponed because of a conflict with varsity basketball practice.

Spirit has been running high on campus all week in anticipation of the fracas and speculation as to which team will be awarded Horatio, the Skunk Day trophy donated by the Sports Department of **The Albrightian**, is, despite the cliché, at fever pitch. Both teams appear to be primed for the contest, although recent injuries to Doty Leiby and Bob Klencik may alter the starting lineups.

## Seven Seniors Picked To Represent Albright For College Who's Who

Chosen Albrightians To Appear In Yearly College Volume Of Leading Students

The annual drive for the sale of books, keys, and shingles, accompanying Who's Who in American Colleges and Universities, has reached Albright College again bringing with it distinctive honor to seven Albright seniors selected for Who's Who by an impartial, though unidentified committee of faculty and students. Because of her smaller enrollment, Albright's quota has been reduced from ten to seven. Their names will appear in the 1944 edition which will come off the press next spring.

Students selected are: Polly Brossman, Polly Walls, Jane Redway Kriebel, Doris Kinsey, Louise Auchenbach, Gerald Hellman, and Robert Klencik.

Miss Brossman, is a Home Ec major, president of the Phi Beta Mu sorority, and the Heo Club and last year received the Home Ec award. She is a member of Student Council and the Color Guard.

Miss Walls, a Math major, is corresponding secretary of the Phi Alpha Tau, "Cue" editor, member of Student Council, YWCA Cabinet, Color Guard, Varsity Hockey Squad, and has served as Assistant Night Editor of **The Albrightian**.

Jane Redway Kriebel, an English major, is president of Sigma Tau Delta and the Women's Glee Club, Vice-president of the Phi Beta Mu sorority, Chapel Organist, and a member of the French, German clubs, Delta Phi Alpha, and Band and Orchestra. She is student director of the Band.

Doris Kinsey, a Chemistry major, is Managing Editor of **The Albrightian**, member of the Alchemists and German clubs, Daywomen's Organization, Varsity Hockey player and manager of the women's varsity basketball team.

Louise Auchenbach, a Math major, is News Editor of **The Albrightian**, president of the I. R. C. and German Club, member of Delta Phi Alpha, Women's Glee Club, Student Council, YWCA treasurer, and sings in the Chapel Choir.

Gerald Hellman, a Sociology major, is president of the YMCA, vice-president of Student Council, member of the I. R. C., Domino, German. (Continued on Page 2, Col. 3)

## "Skunk Day" Celebrants To View Struggle of Hockey Titans Today

Coach Neal O. Harris and Coach Eva Moser will officiate.

Indicative of the hold which Skunk Day has taken upon students and faculty alike are the plans of other contributing organizations. Between periods, the College Band will drill and play, one formation to be that of a giant hockey stick. Cheerleaders will be whooping it up all during the afternoon. The Department of Mathematics, through John W. Young, will provide accurate slide-rule statistics. The Physics Department, through Professor Charles Miesse, will provide an amplified play-by-play commentary over the public address system from the steps of the science hall. The Color Guard will march. The First Aid Squad, complete with stretcher, will be on hand.

Horatio will become the property of the winning team until Skunk Day, 1944. He will then be detained in the custody of the Sports Department of **The Albrightian** until the 1944 battle is over.



# The Albrightian

THE ALBRIGHTIAN is published weekly during the school year by the students of Albright College, Reading, Pa.

**DORIS KINSEY** Managing Editor  
**LOUISE AUCHENBACH** News Editor  
**BETSY HUMMEL** Assistant News Editor

**ROBERT KLENCK** Associate Editor

**NEWS**

**Lura Heverly** Jane Teitworth Mary Bowlin  
**John Young** Ruth Ritzman Helen Ancona  
**Phyllis Carter** William Lippert Jane Kriebel  
**Madeline Haag** Irene Fisher Gretchen Bieber  
 Eleanor Schubert

**FEATURES—FELICE EPSTEIN** Feature Editor  
**Ann deFarges** Geraldine Bowker Patricia Kramer  
**Mildred Kaebamen** Marion Christ Betty Bradley  
 Emma Cora Hafer

**SPORTS—MARY JANE WEBER** Sports Editor  
**Lucille Griswold, Cecil Pottelger, Paul Deysher**  
 Newell Wert, Kenneth Good

**COMPOSING—BETTY CLAIRE VOESTE** Composing Editor  
 Marion Latta, Helen Grass

**BUSINESS—JOANNA WENTZ** Business Manager  
 Dorothy Scheib, Dorothy Leiby, Helen Brown

**Members of the Staff in National Service**

**Saul Pokrass** Robert Merkel Robert Dombro  
**Richard Major** Allen Hyman Reed Fredericks

The editorial columns of this publication are open to criticisms and communications at all times and are to be taken as the opinions of the editors unless otherwise indicated. No anonymous communications will be published, although names of signed communications will be withheld at the writer's request. Address letters to the editors of THE ALBRIGHTIAN.

Entered as second-class matter July 15, 1941, at the post office at Reading, Pennsylvania, under the Act of March 3, 1879.

Subscription rate: \$2.00.



Member  
**Associated Collegiate Press**

## Skunk Day

After taking one postponement in stride, Albright College has caught up with Skunk Day. Or vice versa. Whichever it is, it is not half so important as the spirit which has swept through undergraduate and faculty ranks expressing itself in whole-hearted and eager co-operation.

And why not? We all know that a war is going on and that these are serious days. We are aware, too, that things like football games, Home Coming Days, and many other things which make college moments particularly pleasant to experience and recall, can not be permitted to stand in the way of national demands. Nor may we forget that it is the sacrifice of others which makes possible our being here at Albright. But, after all, we are a spirited group, steeped in the traditions of the American college. And things like Skunk Day mean a lot to us.

It is significant that Skunk Day is not a promotion job on the part of any "group". It has proceeded from the natural disposition and temperament of Albright College. It is as spontaneous as an Italian Sandwich. Tony Stish put it well when he asked, "Who ISN'T going to be there?"

## Long Division

Let us imagine that we have all been drafted, sent abroad, captured by the enemy, and chucked into a prison camp. Or, let us suppose we got mixed up with some of Colonel Tchou's hilly-billy friends. Those of us who are well read may think along the lines of Terry and the Pirates and recall Hu Shih, and some of her student friends.

The point is that all college students do not have the opportunity of being in college today. Bob Starr, for instance.

It is an awfully good idea to bear all this in mind as Janet Luckenbaugh and Bill Lippert, with their committee, go to work on us this week for the World Student Service Fund.

Last year the drive went over the top, hitting \$233.19. This year our quota has been reduced to \$150. Divide that by about 230 students and see what we can get. Or, better still, see what we can give.

## After Hours

'Tis most gratifying to note that the editorial column of THE ALBRIGHTIAN hits the eye. But it's even more satisfying to know that the impression passes along the optic nerve, demanding consideration. Such was the case of "Good Intentions" in last week's publication.

Acting Librarian Esther Fenili, responding to the lamentations of Daystudents and their objections to library hours, offered this statement: "Any Daystudents who are affected unfavorably by the library hours should come and see me personally." As she pointed out, she has no jurisdiction to open or close the library, but she will take student desires into consideration and convey them to the library committee.

No doubt if the committee sees a genuine need existing, hours will be adjusted accordingly.

The curriculum committee has not as yet responded to the alternate suggestion of turning Daystudents into math majors, thus reducing the demand for reference books.

## THE INQUIRING REPORTER

With the vivid interpretation of Sin and Temptation still burning her gray matter, The Inquiring Reporter went about discovering what impressions others got by asking, "What did Religious Emphasis Week mean to you?"

**Opal Brown, '47, Home Ec:** It revealed to me more clearly the works of God's kingdom and gave me a spirit of faith. It gave me determination to kindle a flame of truth of those who have not yet acquired a knowledge of living salvation.

**Paul Mattson, '46, Pre-Med:** Religious Emphasis Week to me meant a week of spiritual stimulation; a week of spiritual upliftment; a week of thought and communion with God—a growth in my religious life!

**Louis McCann, '47, Pre-Ministerial:** Religious Emphasis Week was instructive as well as inspiring. A new light was shed on many old truths.

**Dr. J. B. Douds, Professor of English:** We had a good man with a good message. We are fortunate to have him in our community all through the year.

**E. Jane Teitworth, '45, Sociology:** For me, Religious Emphasis Week was a revitalized challenge for four-fold growth. It deepened my religious faith and set straight my sense of values.

**Newell Wert, '47, Pre-Ministerial:** It meant real thinking about those spiritual things which one so often pushes to the back of his mind.

**Madeline Haag, '45, English:** It was an inspiration. It made me aware of the great need for the security, peace, and inner satisfaction which can only be found in true religion.

**Lillian Schwencke, '44, French:** I enjoyed attending the services during Religious Emphasis Week and derived much value from Dr. Wetzel's sermons. I believe more emphasis should be placed upon religious thought in these uncertain times.

**Charles Russ, '47, Pre-Ministerial:** It was a period when one could definitely dedicate himself fully to God.

**Richard Schlegel, '46, Pre-Med:** Religious Emphasis Week meant to me an hour of unmolested thought, during which I could try to be at peace with myself and the world.

**Irene Fisher, '46, Sociology:** I can honestly say that Religious Emphasis Week was a rich experience from beginning to end. Dr. Wetzel's messages were both inspiring and soul-searching. The closing service, especially, is one that I shall never forget.

**Ruth Shaffer, Professor of English:** One of the best we have had in a long time. Dr. Wetzel has a gift for blending the intellectual with the spiritual and giving to the whole an interpretative so practical that his appeal is direct to young listeners and to those who are older. For me, it was an enriching experience that I could not have afforded to miss.

**Margaret Hendricks, '46, Chemistry:** I enjoyed the morning chapel services very much but outside of that, I wasn't conscious of any religious emphasis.

## Chapel Programs

On Friday, the chapel service will be conducted by Professor Virgil C. Zener, Professor of Education. He will speak on the subject, "Target for Today."

A violin trio, under the direction of Hans Nix, was featured at the chapel program last Friday. The trio, consisting of Ruth Ritzman, Irma Peoples, and Betty Ann Lutz, played "Selection from the Water Music" by Handel, "Death of a Maiden" by Schubert, and "Valse" by Brahms. Accompanying the trio was Luella Moyer, who also played two additional selections, "Prelude in C Minor" by Chopin and "Polish Dance" by Schwarwenka.



The prize corsage of the week—white and green orchids, goes to one who looks like, but isn't a co-ed. Five foot five with eyes of grey—this young lady would qualify as the girl least resembling a dean of women. But, on the contrary to all suspicions of the cadets on campus—who whistle when she passes—this pretty blond with the feather cut is none other than Mary Jane Stevenson, Dean of Women.

Miss Stevenson is a dyed-in-the-wool Pittsburgh gal—even tho' she doesn't have smoke streaks all over her. A graduate of Westminster College, where she majored in French, the Dean is a Kappa Sigma, Psi Chi, Kappa Delta Pi, and an Alpha Lambda Delta, which are, in case you didn't know, a significant series of social and honorary fraternities, all national. She took her graduate work at Ohio University and knows seeds about psychology and how to handle students. That has been proven quite decidedly during her reign at Albright.

Mary Jane (as she is affectionately referred to by Albrightians) came to this campus from Penn State, where she served as assistant to the Dean of Women. Any girl at Albright can testify to her ability to hold the position of Dean of Women. Vivacious and understanding, she is the perfect person with whom to discuss plans for a dance or to whom to tell your troubles. If a girl needs a date, she can tell Miss Stevenson; if her favorite man has eloped, Miss S. will listen to that tale of woe. Unlike many people invested with authority, "Mary Jane" will listen sympathetically to the underdog's argument before putting her foot down on an issue. Tho' she is a more than efficient disciplinarian, her manner of penalizing is so charming that it is almost a pleasure to face the music.

A lover of many things, from cabbages to kings, this guardian of the girls ranks amongst her favorites music, collecting records, travel, hikes, camping, books, and—of all things—MICE. She thinks mice are adorable creatures, and has an extensive collection of china, glass, plastic, and hairy artificial rodents. Two of particular are kept in a glass case and are the closest to the real thing this writer has ever had the serene experience of viewing.

Miss Stevenson's domain, wherever it may be, is always permeated by a homelike and extremely pleasant atmosphere. Her tremendous collection of books range from Ogden Nash to Oryza Khayyam, and includes all sorts of fascinating works. An avid reader of magazines, everything from "Fortune" to "Good Housekeeping" are represented in her racks.

One of the pleasantest ways of spending a dateless evening is to visit our Dandy Lion, either to hold enthralling conversations with her or to browse amongst her books and records.

The string of complimentary adjectives which could be used to describe Mary Jane Stevenson is endless, so let it suffice that she is a "sharp" dean. A pal, as well as a professor, we can thank her just for being.

## Seniors Picked for Who's Who

(Continued from Page 1)  
 Glee Clubs, Chapel Choir, the Alpha Pi Omega fraternity and Kappa Tau Chi.

Robert Klenck, a Philosophy major, is Associate Editor of *The Albrightian*, editor of the *Compass*, member of the Alpha Pi Omega fraternity, Kappa Tau Chi, YMCA Cabinet, Sigma Tau Delta, and is on the Varsity basketball squad.

## Inside Albright

By JOHN YOUNG

This week THE ALBRIGHTIAN inaugurates a new feature in "Inside Albright"—to wit, "What happened at Albright umpteen years ago", or "The good old days". This week we crawled through the files of Albrightiana on the second floor of the library and unearthed the "Albright Bulletin" of November 9, 1928, just fifteen short years ago. In future columns we will take you back even further, at least if our files hold out.

The leading article in this issue was about the forthcoming junior play, a little master piece entitled "What Anne Brought Home". This play was being given for the benefit of the "Speculum" of 1930. (For the information of the ignorant, including myself, the "Speculum" was the "Cue" of the day.) Apparently they believed in making sure of their finances well in advance; two years in advance, according to the story. The article was full of cryptic little sentences like "One of the many interesting features is the development of a fish farm". This fascinating bit of publicity was given with nary a word of explanation, like that Anne brought home the fish farm or that Anne lived on a fish farm or what have you. I have a fish farm. You see what working on this paper does to you.

This general atmosphere of mystery was extended to other fields. For instance in the article on the meeting of the Thesimian Literary Society came out of the blue "Program: 3. Thesimian Echo—Mamie Coed—We all confess Mamie had a very interesting echo and enjoyed listening to it." This presents a very unusual prospect—the members of the Thesimian Literary Society sitting around listening to each other's echos.

The Albright Bulletin had jokes too. These jokes positively will not be accepted in the next Inquiring Reporter question on corn on campus. Here are two samples.

Sergeant—"Officer, that man is intoxicated; he has been drugged."

Officer—"Sure he is. I drug him two squares to the station." Joke number 2: Orator—"Are you working men—you sons of toil—going to take this lying down?"

Rude voice—"Not likely. That's the reporter's job."

The place of the late lamented "Snooper" was taken by a column called the "Parrakeet" which delved into the private lives of the students in 1928.

The other lead story concerned a meeting of the Intercollegiate Newspaper Association. This meeting was given no less than three-quarters of a page space. No paper shortage in those days.

Watch next week's THE ALBRIGHTIAN for the continuation of these fascinating stories. What DID Anne bring home? Did the fish farm develop properly? Did the echos keep on echoing? Did the jokes still sm - - - I mean appear? I bet you can hardly wait for next week's copy.

## There Was A Man

My train of thought has had a wreck,  
 I've a pain in the neighborhood of my neck;  
 How can you let me suffer so,  
 Simply because I do not know  
 Why a man with a dollar got kicked off a car,  
 After riding three blocks, which is not very far?  
 He bought a drum, and drumsticks two,  
 On the whole, a logical thing to do,  
 All of which cost him sixty cents,  
 Which is hardly of any consequence.  
 Now my very colossal, gigantical brain  
 Has tried to get out of this maze, in vain.  
 Oh, please, kind sir, take pity on me,  
 I'm a physical wreck, as you can see!  
 I haven't slept since Sunday night,  
 A simply horrible, awful plight.  
 And if zeros are the tragic end  
 Of my last exams, it's you, my friend,  
 Who are singly and solely alone to blame  
 For wrecking my here-to-fora very good name  
 With a riddle most certainly not on the ball,  
 Which, in fact, hasn't got any answer at all!  
 (And I'll heckle and haunt you, and never more quit it,  
 Until, my friend, you break down and admit it.)  
 —Helen Brown

(Ed. note: Obviously Miss Brown does not understand the story.)

## Council Says

Student Council tossed the nominations for sophomore class president, vice prexy, and treasurer out the window in room 106 at their meeting last Thursday. It seems the sophomores were either uninformed or misinformed concerning nomination procedure and they will try again under the rules are explained to them.

In order to coordinate Student Council dances sponsored by other campus groups, the committees of said groups will work with the S. C. social committee.

One of these days, President Peters will appoint a chairman for the Men in Service Committee.



### Representative of Waves Outlines Navy's New Program to Seniors

Ensign Mary Walmteymer from the Naval Procurement Office in the Weidner Building, Philadelphia, spoke to the senior women Tuesday, Nov. 9, 1943 at 1:15 p. m. about the new WAVE program making it possible for college graduates to be taken directly into officer training.

Formerly the WAVES required several years of experience or at least six months training as enlisted personnel before women could apply for officers candidate school. However, last July the original quota of 11,000 was increased to 91,000 which naturally increased the demand for officers. Furthermore it was decided that for some duties, women just out of college would be better fitted than older ones.

### Lions in the Ranks

(Continued from Page 1)

intensive physical, military, and academic instruction there, preparatory to beginning actual flight training.

SGT. PRESTON E. GILLIS, '39, V-mails from Sicily: "It may be that several copies of Vol. XL No. 1 have traveled farther than the copy I received, but I doubt if they were enjoyed as much, well at any rate, no more. I confess the only names familiar to me were members of the faculty and administration, but I'll get acquainted with the student body as we get on into the school year! Miss Garlach, if she is still present, might like to know that the little French she managed to bash into my head did some good, not much, during the Tunisian Campaign. What's the price of a correspondence course in Italian? A big-hello to a swell faculty and best wishes to you all."

PFC. JOHN F. RUDZINSKI is studying electrical engineering at M. I. T. "The food is swell, and so are the co-eds. To tell the truth, I really miss Reading . . ."

Pfc. John F. Rudzinski, 13099677 Co. A, ASTU—SCSU 1142 Mass. Institute of Technology Cambridge\*39, Mass.

From the University of Pennsylvania writes A. S. ERNEST KACHLINE of the Navy V-12 program, "I think receiving the paper makes you all the more conscious of how much you miss Albright . . . Here at Penn everything is O. K. When I reported July 1, I met BOB BOLAND, KEN DETWEILER, RUSS GUENSCH, and PHIL ANGSTADT. They all left for other V-5 stations, but DICK HAGMAYER reported here recently and I met MERVIN RUNNER a few weeks ago." Then he says a few kind words for freshman BILL LANDIS, his home-town neighbor.

Ernie's address has been slightly changed to  
Coxe 48,  
University of Pennsylvania,  
Phila., 4, Pa.

Fellows and gals, it is our earnest desire to hear from you all to know what you are doing. One way to be sure that our information is accurate is for you, yourselves, to drop us a line now and then and report on your life in the service. We here at Albright are proud of our Lions in the Ranks and we'll make no bones about letting you and the world know it. We'll be waiting to hear from you.

"SAY IT WITH FLOWERS"  
**F. O. LIPPOLD**  
Bonded F. T. D. Member  
We Grow Our Own FLOWERS  
For All Occasions  
If you are in need of Flowers, try Our's  
146 N. 9th St. Dial 2-2554 Reading, Pa.

### May Enlist Now

The program is so arranged that a senior woman may be partially inducted now and upon graduation may complete her induction and be sent directly to the midshipman's school at Smith College, Mass.

In order to qualify, the woman must be a senior in good standing scholastically, and active in extra curricular activities. She must be approved by the Dean and have a letter from the faculty committee verifying the fact that she is an outstanding member of her class. She must then pass a physical examination which Ensign Walmteymer assured is not too stiff, and a mental test.

### Commissioned in Two Months

Upon completion of the two month's course at Smith College in Naval organization, the newly commissioned Ensign may either be put directly on duty or be sent on to a school for specialized training.

## SCIENCE SLANTS

By EMMA CORA HAFER

Should you see the chem students—from the happy-go-lucky frosh to the brow-beaten seniors—dutifully hiking to the science hall with a 10 foot ladder under their arms instead of the traditional handbook—don't stare; it isn't polite. No, they're not going to finish the paint job on the Merner-Pfeiffer Hall of Science. The fact is that learning has been revolutionized in the past few days by a new school of scientific thought under the influence of Prof Richard N. Rhoda. Up to date, it seems that this campus has been oblivious to the possibilities and powers of the supposedly simple periodic chart—copies of which may be found in any frosh chem text, but those on the walls of the lecture hall and room 208 of the science building are truly a revelation—even to one professor. On them may be found just about every little thing there is to know about the 92 elements except how to make them equal a beef steak.

### Climbing "Elementary"

And that's where the ladders lead—right up to the walls of the lecture hall and room 208 where the students will push and study to their heart's content the wonders of the elements—wrapped in the bright shades of red, black, blue, and yellow of the periodic table.

### Biology Bugs

Hear ye, biology I slugs! When dejected, when in doubt, about some of the ghastly slides you peer at in class, drop down to the histology lab in the basement and see some real puzzles made by a fellow named Green way back in some dark age.

Dr. Horn is considering having a sick call hour for the soldiers on Wednesday and Friday afternoons in the histology lab since it is so convenient for all parties involved.

To all interested in taking one of Prof Marcus Green's extended hikes after the war, here is a suggested snack to take along with you. It is militaristically known as Field Ration K, a three meal package of concentrated food—good for 3,726 calories. The breakfast package consists of compressed graham crackers, veal, a fruit bar, malted milk, dex-

### CALENDAR

**Tuesday, November 16**  
8:10 a.m.—Hesembly—Y. M. and Y. W. in charge  
1:15 p.m.—The Albrightian Staff  
7:30 p.m.—The Seminar—H. Ec. Lab.  
8:30 p.m.—Cabinet Meetings

**Wednesday, November 17**  
4:40 p.m.—Band  
7:30 p.m.—German Club  
7:30 p.m.—Heo Club  
7:30 p.m.—Philosophy Club  
7:30 p.m.—Sigma Tau Delta  
8:00 p.m.—Berks Alumni Card Party—Y. W. C. A.

**Thursday, November 18**  
3:40 p.m.—Women's Glee Club  
4:40 p.m.—Student Council  
7:30 p.m.—Domino Club—College Chapel

**Friday, November 19**  
8:10 a.m.—Chapel—Dr. V. C. Zener  
1:15 p.m.—The Cue Business Staff  
4:40 p.m.—Band  
4:40 p.m.—Kappa Tau Chi  
9-12 p.m.—Day Students' Dance—Berksure Hotel

**Sunday, November 21**  
8:45 a.m.—Bible Class—College Chapel  
7:30 p.m.—Vespers—Sylvan Chapel

**Monday, November 22**  
3:40 p.m.—Symphony Orchestra  
4:40 p.m.—Band  
4:40 p.m.—Debate  
6:30 p.m.—Phi Beta Mu Rush Dignier

### Inmate of A. P. O. House Discloses Stuff and Junk About the Frosh

Upon roaming thither and yon on the Albright campus, it is inevitable that one comes across a large, square, green and white building with a long stairway leading up to its door. On the first floor of this building is the Chapel while on the second floor is the A. P. O. house. We wondered about the letters "A. P. O.," too. Some of us thought it meant "Army Post Office" but that brain-storm was soon smashed and we found out that we were living in a "frat" house. (We the humble frosh, were acting as naïve as the upper classmen think we are.) Devils that we are, we took a fiendish delight in listening for the pause which came after one of our sweet, girlish voices had answered the phone with "Hello, Alpha Pi Omega Fraternity House." However, this has since been changed to just—"A. P. O. House."

The most interesting feature of our house is the winding staircase leading upstairs. These stairs are really a novelty and there's an art to ascending and descending them. We sometimes find ourselves unconsciously taking a curve on a straight staircase, and we have to straighten out mightily quickly before people start tapping their foreheads knowingly.

Other interesting features are the inhabitants of the A. P. O. House to which this recipe is dedicated: take twelve freshmen, scramble them together, add two seniors for spice, and a housemother for variety—Mix well

and serve as follows: the girls in the back room or the "suite", B. B. which stands for Betty Burnett, not Bunsen Burner; Ferné "trombone" Allen; Opal "Southern-fried" Brown, and Midge "wise-cracks" Abrams. This foursome can usually be found studying industriously at their desks in one of the prettiest rooms in the dorm. Next room down the line—Minnie "chem Major" Silbermann and Ann "knee high to a grasshopper" Klein. Minnie struggles like mad with her chem and Anna—well, she struggles. Then comes the domain of Joan House and Joy Cutler. We can usually find Joy eating toll house cookies, and studying home economics and Joan, just eating. Incidentally, Joy owns the only electric stove in the house. It comes in very handy at times.

Across the hall from the "J's" room is a large hole in the wall with the sign, "Quiet—War Workers sleeping here," tacked on the door. This, of course, our sleeping room which we also use as an oversized refrigerator or cold storage warehouse. It contains ten beds which talk in their sleep. We continue our meandering down the hall and our next stop is at the room of Marion "Squeaky" Kreiger and Bobby "Joan Davis" Calamara. Neither of these can study in the same room. Both talk so much, one has to leave. Across from this is the room, containing some of the ancient relics of Albright, including Polly Walls and Gerry Bowker. These two lucky seniors are our guardian angels. They are our answer men and Gerry is still waiting for the \$64 question. They have really helped us through and we appreciate it. (Besides, they have the only ironing board.) Still further down the hall we come to a room which shouldn't be called a room, but a gadget corner. Helen "Freddie" Cone spends all of her spare time trying to make Lynne "Debutante" Parr aware of the fact that "There is a dustpan in the closet, therefore, why push the dust under the bureau, huh?" Prof Elder is our housemother and her room is the last on the list. She also, is an answer man, and a good one.

The large space with the venetian blinds is our haven. There we gather to discuss, dance and listen to the radio. It's our relaxation and recreation room, and we use it as such, with no restraint.

Now that you've found out about the various rooms and boarders of the A. P. O. House, a word about the leaky ceiling—Confidentially, it drips—

We like it best though, when we forget and say O. P. A. instead of A. P. O. What would Mr. Henderson say?

# The Traffic is TERRIFIC!

Albright College Copyright Library

If you think there are no more traffic jams, you should hear what's happening inside that telephone cable!

Long Distance lines between busy centers of war activity are packed to capacity with calls these days.

Until we can get more copper and other materials to build more circuits, some Long Distance Calls will be delayed. It's too bad; but remember, it's better for us to wait for calls than to have our fighting men wait for bullets!

**THE BELL TELEPHONE COMPANY OF PENNSYLVANIA**

**TRY OUR DELICIOUS Hamburgers**  
**MOSER'S LUNCH ROOM**  
WHERE ALL STUDENTS MEET

**KEYSTONE MEAT MARKET**  
READING, PA.

**MAJORING IN SPORTSWEAR**

the **Kins** store  
corner 5th and Penn



# LION TALES

By MARY JANE WEBER

Looking over the situation as this issue goes to press, we find plenty of iron on the sports fire.

Most important on the moronic side is this afternoon's men-women hockey game. After a brief, but checkered career on its own, the "Skunk Day" game has finally come under the wing of the Sports Department of **The Albrightian**. We hope that the battle proceeds without further hitches. If you have any complaints, bring them to us and we'll take the blame.

Speaking of hockey, have you attended some of the bang-up hockey contests the Albright women are turning out lately? In spite of the fact that there have been no varsity hockey games this year, class games and high school-Albright games have produced high calibre hockey.

As the season is progressing, the Senior line rates notice for their excellent offense that slammed them into a first place tie with the Juniors in class competition. For the Junior side, there is the Jeanne Miller-Bert Blauch duo. Another reason for their ability to win is Erna Leinbach's praise-worthy defensive play at the halfback slot. Marie Bonner has come up to expectations, proving a constant scoring threat of the Sophomore eleven. Beside these there are many others who deserve public praise for their class spirit on the hockey field. If the schedule continues to Christmas, as is rumored, we hope that the enthusiasm is still there, even in the deepest snows.

Most recent hockey happening here at Albright was the Senior-Wyomissing tilt on Friday in which the Albright team was defeated, 2-0. The Seniors lacked their usual offensive spark, but their defense did a good job of holding down the unique visitors. Both teams played hard, and we look forward to seeing more high school-Albright games in the future.

One matter that threatens to turn out with little success is the proposed intramural basketball league. Coach Harris suggested that it be formed on a class team basis at a meeting of interested players held on Thursday. But the six interested players who attended believed that group competition, like that of the intramural football league, would make for better games. They are now scouting the groups for players. May we insert one word of warning. Be sure that your teams will still want to play two months from now. If things are going to break up any way, why get started at all?

We attended the first regular scrimmage of the varsity cagers on Friday. No definite starting team has been chosen since Tony Stish, Mark Guss, Sterling Rickenbach, and Red Gable all show promise at the guard position. John Durko is taking over at center, with the big boys, Bill Landis and Bob Deach, working out at forward. Naturally we didn't find the smooth coordination of a well polished squad. But there was the enthusiasm and spirit, characteristic of an Albright team. This is an encouraging note.

## Today is SKUNK DAY

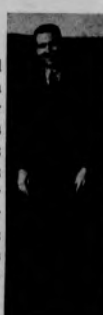
Probable starting lineups for this afternoon's game:

NSDFHASC's		Pos.	ABACWHP's	
Klenck	.....	LW	.....	Griswold
Lippert	.....	LI	.....	Blauch
Snelbaker	.....	C	.....	Bonner
Peters	.....	RI	.....	Peoples
Hantzes	.....	RW	.....	Bentz
J. Potteiger	.....	LH	.....	Wentz
Stish	.....	CH	.....	Seltzer
D. Potteiger	.....	RH	.....	Leiby
Durko	.....	LF	.....	Matz
Faylor	.....	RF	.....	Walls
Deach	.....	G	.....	Kinsey

The reserves: NSDFHASC's, P. Mattson, Heilman, Clewell, Taub, Conners, Cocking; ABACWHP's, Miller, Leinbach, deFarges, Lutz, Seidel, Hendricks, Bieher, Eschwei. Officials: Coach Mosser, Coach Harris.



Coach Mosser



Coach Harris

### Junior Hockey Eleven Downs Soph Team, 7-1

#### Shillington High Squad Shut Out By Albright Sophomores

League Standings

Team	W.	L.	Pct.
Seniors	1	0	1.000
Juniors	1	1	.500
Sophomores	1	1	.500
Frosh	0	1	.000

The unbeatables trio of Jeanne Miller, Bert Blauch, and Anne deFarges zoomed down the hockey field last Thursday to completely baffle the Sophs to the tune of a 7-1 victory. deFarges and Blauch tallied three apiece, while Lutz added with one goal. Betty Bradley assisted on the forward line.

Nothing could stop the Junior line as they charged through the Sophomore defense. All defense players shared in resisting the attack, but the Juniors were literally "on the ball." The upper class team, led by Emma Leinbach on defense, allowed only one goal, scored by Marie Bonner in the second half.

Senior Doris Kinsey played goalie for the Juniors upon the agreement of both teams. She substituted for Betty Claire Veeste, regular Junior hockey goalie.

Lineups:

Sophs		Juniors	
Powick	..... LW	.....	Miller
Rekoon	..... LI	.....	Blauch
Bonner	..... C	.....	deFarges
Wartluft	..... RI	.....	Lutz
Jacoby	..... RW	.....	Bradley
Hendricks	..... LH	.....	Leinbach
Bowlin	..... CH	.....	Calpin
Carter	..... RH	.....	Schubert
Hill	..... LF	.....	Hill
Powfield	..... RF	.....	Ritzman
Voit	..... G	.....	Kinsey

\*played in second half only.

Although they got off to a bad start, the Soph eleven defeated the Shillington High hockeyettes, 1-0, last Tuesday, playing on the home field. The opponents had the upper hand in the contest, but Dot Powick managed to sneak in a score in the first period and the Soph line held back the invaders' tide for the rest of the game.

Meg Hendricks, Peg Shalter, Gayle Haupt, Mary Bowlin, Phyllis Carter, Irene Fisher, and Alice Voit fought hard to defend the Albright goal and succeeded in keeping the Shillington offense out of the paydirt. The forward line couldn't keep the peg in their possession long enough to break through the visitor's defense more than once.

The Shillington eleven threatened to score most of the game. Their forward line pushed the opposing defense, including the halfback, to striking circle but never quite got through.

Lineups:

Shillington	Pos.	Albright	Sophs
Webber	..... LW	.....	Powick
Johnston	..... LI	.....	Rekoon
Linderman	..... C	.....	Bonner
Wenrich	..... RI	.....	Shalter
Emerich	..... RW	.....	Jacoby
Mark	..... LH	.....	Carter
Shukers	..... RH	.....	Hendricks
Fisher	..... CH	.....	Haupt
Wagner	..... LF	.....	Bowlin
Koffer	..... RF	.....	Fisher
Leinbach	..... G	.....	Voit

Substitutions: Shillington, Stover; Albright, Wartluft, Ancona.

### SIDE LIONS

In their recent 21-7 defeat at the hands of the Atlantic City Naval Air Station, the Mules were captained by Albright's former star fullback, Wally Duncavage.



Wally Duncavage

Plans for intramural basketball are proceeding very slowly since only a few men attended the meeting, for the purpose of setting up the program, called by Coach Harris, and held in the Chapel last Thursday noon. . . . Representatives from each group in the intramural setup are to sign up interested players for a league. . . . Games probably be played in the Thirteenth and Union Gym.

Albright's adopted football team, the Reading High Knights, played their last home game Saturday afternoon in the local stadium. . . . The game, against Easton, was their seventh conference game. . . . Invading Lebanon the previous week, the Knights took a 7-0 win from the home team for their second conference win of the season.

### Cagers Get Set For Game With Alumni Service Squad

Holding workouts five times a week, Coach Neal O. Harris is grooming the Lion cagers for their initial tilt of the season, to be held in two weeks. No definite starting combination has evolved as yet, as the team is still working on the fundamentals of offense and defense. The first regular scrimmage was held last Friday in the Thirteenth and Union Gym.

From all indications, this year's basketball season is due to get underway on November 27, when the home team will entertain a mixture of alumni and Lions now in the Ranks. Coach Neal O. Harris expressed high hopes that the clash will come off as scheduled. He said that the alumni-service squad will put a fair array of talent on the floor and expects the affair to be packed with the usual thrills of the game. The fellows who will probably make up the homecoming squad are: Walt Houser, Chin Rhoads, Ray McKinney, Russ Guensch, Dewey Boltz, Flip Angstadt, Red Scheffer, Steve Hydock, Jim Kane, and George Horn.

Returning to the ups and downs of his own team, the Lion mentor announced that he will probably cut the squad to ten men in the near future. Coach Harris explained that he is making this move to enable him to work with each player individually. He said that most of the boys have had little experience in fast company, and that by carving the squad to the bone he can round them into shape much more quickly. Scrimmages have already been started during the past week. The Lion chief hinted that he is working on something new to give his opponents a little surprise. He also stated that he will continue to work with the same offense and defense that he previously had worked out and does not expect to make any changes in the immediate future.

Coach Harris again praised the spirit of the team. He said the boys were a very cooperative group and that they were very eager to learn. He also said the squad shows a marked improvement from when it first started practice. The cage coach expressed the belief that when the opening whistle blows, Albright will put a team on the floor that knows its basketball and will play a heads-up game.

Men attending Albright who are entered in the event are: Harry Hantzes, Norman Telsey, and Tom Clarke. Hantzes did his running at Mount Carmel High, being on the cross country team in that school. Telsey ran at Richmond Hill High School in New York City, where he also did quite a bit of track work. Clark, freshman entrant, was a hot shot on the Nuhlenberg High team of last year.

The race will start at 10:30 at the Perdon Park field house, and will be 2 1/2 miles long and will finish in front of the Pandora field house. Entry to this event can still be made by consulting Coach Neal O. Harris or the City Recreation Board office on or before November 19.

Men attending Albright who are entered in the event are: Harry Hantzes, Norman Telsey, and Tom Clarke. Hantzes did his running at Mount Carmel High, being on the cross country team in that school. Telsey ran at Richmond Hill High School in New York City, where he also did quite a bit of track work. Clark, freshman entrant, was a hot shot on the Nuhlenberg High team of last year.

USE TICKET BOOKS AND HELP SPEED UP SERVICE!  
Ticket books are sold at the General Office, 12 South Fifth Street, and at the Inspector's Booth, northwest corner of Fifth and Penn Streets.  
Reading Street Railway Company

FOR CONVENIENCE RELIABILITY BETTER SERVICE  
BUY AT BOYER'S DRUG STORE  
Thirteenth and Army "DRUGS THAT ARE"  
VISIT OUR FOUNTAIN All the Other Students Do!

Store 3-7771 Res. 2-3923  
Mae's Flower Shop  
Flowers for All Occasions  
819 WALNUT STREET READING, PENNA.

Mansion Bowling Centre and Luncheonette  
Latest in BOWLING EQUIPMENT Air Cooled and Air Conditioned  
"THE BEST IN BOWLING"  
Meet your college chums at the MANSION

"The Sportsman's Store"  
NUEBLING'S INCORPORATED  
Cor. Ninth and Penn Streets  
Headquarters for ATHLETIC SUPPLIES  
Special Service for Schools and Colleges • Phone 4-9253

WM. G. HINTZ, INC.  
Your Stationers Since 1883  
FINE STATIONERY  
Books • Games • Gifts  
Greeting Cards • Wallets  
Fountain Pens • Bibles  
Accounting Forms  
830-840 PENN STREET

Men's Military, Work and Sportswear  
JASLOW'S  
READING'S ORIGINAL ARMY-NAVY STORE  
In Reading, Pa., 817 PENN ST.  
In Chambersburg, Pa., 123 SOUTH MAIN STREET

AFTER THE GAME!...  
AFTER THE SHOW!...  
AFTER EVERYTHING!...  
MEET YOUR FRIENDS AT THE  
Crystal Restaurant  
537-47 PENN STREET • On the "SQUARE" for 32 YEARS!