

Youth Party Begins Xmas Plans For Y

The YMCA-YWCA will sponsor its annual Christmas Party for underprivileged children Sunday from 3 p.m. to 6 p.m. in Krause Hall.

Albright students desiring to be parents-for-a-day are to register in the administration building. The cost of \$1.00 for registration will be used to buy the child's supper and a new toy. "Parents" needing transportation to bring their children to the party will meet at Krause Hall at 2:00 p.m.

Santa To Appear

The program, of which Nancy Ratajczak, '60, has charge, will feature games and a visit from Santa Claus, who will distribute gifts to all the children. The toys that the students have donated have been repaired this week and will be included in Santa's gifts.

John Weaver, '61, will speak at vespers on Sunday at 7:15 p.m. in Teel Hall Chapel. Weaver is a pre-ministerial student.

Christmas caroling Tuesday will be the next Y-sponsored activity. Members of the four social fraternities as well as independent boarding and commuting students have been invited to join the carolers. They will assemble at 7:30 p.m. and then sing for several faculty members and shut-ins.

Refreshments Planned

After caroling the group will return to the Pine Room about 8:30 p.m. for refreshments. Barbara Cox, '59, is in charge of the affair, assisted by Dorothy Spohn, '58.

Thursday at 11 p.m. the Ys will sponsor a Christmas midnight communion. This candle-light service will feature a story of what happened to the gifts of gold, frankincense, and myrrh which the Magi brought, entitled "The Gifts of the Wise Men."

Frats, Dorms Will Be Closed For Christmas

During Christmas vacation, which extends from Friday, Dec. 20 to Monday, Jan. 6, all fraternity houses and Albright Court will be closed. Selwyn and Teel Halls will remain open to provide housing for an Evangelical United Brethren Convention to be held on campus.

Special cases will be considered as emergency cases, particularly due to working programs. Anyone who finds it necessary to remain on campus, after vacation has commenced, is required to take his case to the dean of men.

Under Supervision

Any person who remains on campus at this time will be housed at Albright Court. They will be under the supervision of the resident families. Each student must secure his own linen and will be required to pay a rental fee of .50 a night. No meals will be served and no food will be allowed in the apartments.

All entrances, except the front doors, will be locked at all times, and the front doors will be locked at 12:30 a.m. All cases must be presented several days in advance to allow for proper arrangement with the resident families.

Purposes Explained

The purposes of this policy are: 1. to enable as many college personnel as possible to enjoy the vacation period, since personnel being on vacation withdraws supervision of housing units, and 2. to close as many areas as possible to conserve fuel and electricity and to keep down costs.

4th Annual Community Convocation Set For February 15 In Fieldhouse; Dr. F.S.C. Northrop Will Be Speaker

Musical Groups Plan Programs

The Glee Club will present a brief concert tonight in Nativity Lutheran Church at 13th and Amity streets in Reading. The concert will be given during the intermission of a Community Night which is being held in honor of the dedication of a new addition to the church.

The Band embarked on a busy holiday season Tuesday night as they led the annual Junior Chamber of Commerce Christmas Parade on Penn Street in Reading.

Chapel Programs

Tuesday and Thursday the Band and Glee Club will combine their efforts to present the chapel programs in Krause Hall. The Glee Club, accompanied by Ruth Shaffer, '59, will feature "The Story of Christmas Cantata" by John Duddy, featuring soprano Martha Richards, '59, alto Anne Young, '59, and baritone Charles Wolfe, '60, as soloists. "And the Glory of the Lord," from Handel's Messiah, "Rejoice and Sing," from Bach's Christmas "Oratorio," and "Masters in the Hall," an old French Christmas carol, will also be presented.

Three Selections

The band program will be a "Medley of Christmas Marches," "Three Choral Preludes," by Bach, and the "War March of the Priests," by Mendelssohn.

As a finale, the Band, Glee Club and the entire student body will join in singing Christmas carols.

College Heads Report To SC On Three Items

The administration announced that the rooms in Albright Court will be used to house visitors during the Third Quadrennial Student Conference of the Evangelical United Brethren Church at the last meeting of Student Council. The administration also stated that cuts during the week prior to the Christmas holiday will be treated no differently than cuts at any other time and refused the students' request for a juke box in the canteen.

Kopp Speaks

Dean of Men John W. Kopp, although unrecognized by the chair, managed to speak to Council members about the forthcoming convention to be held at Albright during the Christmas holiday. He said that all EUB colleges must sponsor a convention every 20 years.

Informing Council members of a clause in the contract which boarding students must sign which states that the representatives to such meetings can be housed in the dormitories, Dean Kopp also said that residents of Albright Court will be permitted to place their valuables with the school for safe keeping.

Dean Kopp stated that he was positive that the "boys and girls" of Albright College would be glad to lend the use of their rooms for this purpose.

Watson Reports

Dean of the college George W. Watson, in a letter to Frank York, '58, Student Council president, said that absences during the week prior to the Christmas holiday will not be considered as "excused" absences. He went on to say that students who have prepared for the cuts they will be taking by maintaining regular class and chapel attendance will have nothing to fear—especially if their academic records are satisfactory.

Student Directory Now On Sale In Bookstore

For the second consecutive year a Student Directory has been published through the efforts of Student Council. The directory, which is now available to students at the bookstore for .25, was compiled under the direction of Cella Petrucelli, '59, and a staff consisting of Amella Potteiger, '59, Barbara Rittenhouse, '59, and Donald Matalavage, '59.

Consisting of seven pages, the book contains the names and addresses of all commuting and boarding students at Albright. Due to the fact that the directory takes the form of a book this year instead of a pamphlet, less space is available and, therefore, phone numbers were omitted.

Northrop Professor At Yale University

The fourth annual Albright College Community Convocation will be held Saturday, Feb. 15, 1958. Following the dinner to be served in the fieldhouse, Dr. F. S. C. Northrop, widely traveled philosopher and educator, will address the group on the topic of, "Human Values in a Scientific Age."

Two Schools

Dr. Northrop is Sterling Professor of philosophy and law in the Law and Graduate schools of Yale University, where he has taught for more than 30 years. He has held visiting professorships at several universities in the United States, Hawaii and Mexico, and lectured at the Foreign Service Institute of the Department of State, and at the Air, Army and Naval colleges.

The holder of several degrees from colleges both in the United States and abroad, Dr. Northrop has traveled and studied in Great Britain, Australia, Europe, Asia, South America and Mexico. He was graduated from Beloit College in 1915 (receiving a Litt.D. in 1946) and earned his Ph.D. in 1924 from Harvard.

Studied Abroad

He did further studying in England and Germany in 1932-33 under a Guggenheim Fellowship. In 1949 he received an LL.D. from the University of Hawaii, and in 1955 an LL.D. from Rollins College.

All alumni and townspeople will be invited to the dinner set for 6:30 p.m., and can make reservations in the public relations office for \$2.75 per plate. As last year, Albright students will be welcome to come for the speech.

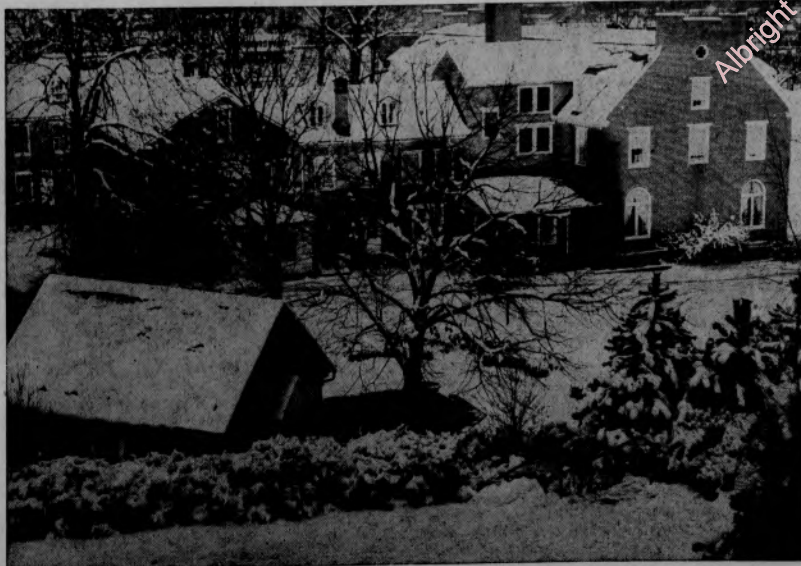
Last Year

Louis Fischer, authority on Russia and international relations, was guest speaker at last year's convocation. The programs are selected by the convocation committee headed by Ellery B. Haskell, associate professor of philosophy. Over 400 are expected to attend.

Tonight's Activity

There will be no Friday night activities tonight or until January 31, Paul Reetz, '59, chairman of Student Council's Friday night activity committee has announced. He gives the following reasons: 1. the committee is over its budget, 2. the fraternity rush dances Friday nights and 3. basketball games Fridays. He said since most of the freshmen will be going to the fraternity functions, it would not be necessary to have the weekend dances.

Winter Wonderland At Albright



Views of the News . . .

Attitude Toward Science Reflects School Teaching

A furor is rising in the United States about science education in the nation's schools. It has been charged in many of the leading newspapers that the present educational arrangement is at fault for not producing enough scientists and engineers. The fault may lie, however, with the attitudes of the students toward science, the attitudes taught to the students from grade school to high school.

What is this attitude that is being taught? It can best be summed up in this way—science is advancing at a terrific rate of development and producing tremendous quantities of material goods for the people of the world; it is in the area of human relations (the social sciences) that the world needs progress at the present time in order that its people may learn to benefit from the advances of science.

While it is true that progress in the social sciences is needed today, it also appears that this idea, constantly presented to school children in the public educational systems of this country, is quite probably responsible for the lack of enthusiasm that many students seem to have toward science.

A proper balance between science and social science is needed in the schools. The place to begin this balance is in the attitudes presented to the students. Both trained scientists and social scientists are needed—our schools must produce both.

Students Run Station Tomorrow For Agon

Albright students will contribute their time tomorrow toward the operation of a Gulf service station at 8th and Spring streets in Reading. The project is under the direction of Student Council and has been undertaken to provide funds for the publishing of a literary magazine in spring, *The Agon*. The *Agon* was originally published in spring of 1956 and contained original writings by Albright students.

Due to an absence of funds, it was not issued last spring. The money turned over to the students from the operation of the station will be in proportion to the number of college-affiliated people who patronize the station during the day. This is a project that deserves the full support of all Albrightians. Don't forget to patronize the station tomorrow and help the staff of *The Agon* to return a literary magazine to this campus.

SC Takes Forward Step In Voting To Join NSA

Student Council recently voted in favor of joining the National Student Association. Congratulations are in order to the Council members for taking this step. Up until last year, Albright's Student Council had held membership in NSA, but in November 1956 it withdrew its affiliation. Council took a forward step when it voted to join NSA again.

The value of such a connection is threefold: 1. it contributes to a free exchange of knowledge concerning student affairs between colleges, 2. it often aids in the solution of student problems, to the benefit of both students and administration and 3. it gives student leaders a new slant on the role of activities such as student government and student journalism. This new slant encourages a more constructive and a more responsible position on the college campus for student organizations.

The Albrightian has seen the value of affiliation with the national college newspaper association, the Associated Collegiate Press, and welcomes Student Council into the ranks of those campus groups who have affiliation with other colleges through a national organization.

THE ALBRIGHTIAN

Published by the students of Albright College, Reading, Pa.

Philip Eyrich, '58	Editor-In-Chief
Richard DeLong, '58	Business Manager
Louis Rossi, '59	Associate Editor
Clifford Franks, '59	Assistant Editor
Elizabeth Smith, '59	News Editor
Betty Williams, '58	Feature Editor
Lee Swartz, '58	Sports Editor
Robert Poff, '60	Staff Artist
Gary Stone, '59	Staff Photographer
Mary Bray, '59	Typing Editor
Maxine Thus, '59	Circulation Manager

Member, Associated Collegiate Press and Intercollegiate Newspaper Association.

Entered as second class matter, July 15, 1941, at the post office, Reading, Pa., under the act of March 3, 1879.

Subscription rate \$2.00 per year.

Letters To The Editor

Congratulations

To the editor:

I wish to congratulate you on an excellent job, *The Albrightian* for Nov. 22, 1957. This is the best issue of your publication that has been presented during my experience on this campus. It is superb for it discusses, both editorially and factually, issues of importance not only here on the Albright campus, but on all college and university campuses.

I certainly hope you keep up this kind of work, for in this issue of *The Albrightian* you are serving the true purpose of a college newspaper, you present facts and cause thinking in the minds of your readers. Congratulations again.

Bob Peckham, '59.

Question Raised

To the editor:

Although I know this issue has come up in more than one Student Council meeting, I feel as though it should be raised again. I think that the library should be opened on Saturdays, at least in the mornings. This would aid in term paper writing, research and any other studying that requires facilities other than a dormitory room or home can offer.

Interested Student.

Speech Submitted

To the editor:

Due to the lack of time at our last meeting [of the freshman class], Prof. Yeager was unable to give this laconic speech. Since I believe this speech contains dynamic tendencies, and may aid the upper three classes, I think printing it in your next issue may benefit the whole college instead of only the freshman class. Let me know what your decision is at your convenience. Thanks.

Herb Miller, Jr.

"... Your class officers are most anxious to have this class of '61 be an outstanding class. You have expressed your confidence in them as leaders of your class by electing them to office. But what happens so frequently? Once officers to an organization are elected, a great many members wash their hands of their responsibilities. Such a situation you must agree is very unwise and is the basis for a disease called "lack of spirit and unity."

"... Your success as an outstanding class depends on two factors, "spirit and unity." When you come up with an idea that will strengthen the spirit and unity of your class, present it to your officers in writing so they can weigh its merits before presenting it to the class. And if they should reject the idea, respect their decision

"... In my opinion, one of many good virtues a person should possess is the art of disagreeing without being disagreeable.

"Since you have become a member of the Albright College family you may have heard remarks that this campus lacks spirit. Don't you believe it. There is a real spirit here . . .

"... A college is a community of its own. Whether it will be a good community, one that will give you a feeling of pride to belong to, depends on you, all of you. The administration and faculty are back of you 100 per cent, give them the same consideration. And finally, give your officers the same support as you would expect if you were in their position."

LITTLE MAN ON CAMPUS BY BIBER



Albright Personality

Millie Folk

By EDWARD TRAYES

We are proud to present one of the most outstanding senior women in the person of Millie Folk. Her varied activities on campus, including student government, athletics and publications, attest to her versatility as well as to the interest she takes in student activities and other organizations.

She was formerly secretary of the YMCA-YWCA Cabinet and presiding officer of the Inter-Sorority Council. At the present time she is

president of the Phi Beta Mu social sorority and vice president of the Women's Athletic Association.

Last year Millie was awarded the Beta Sigma Phi scholarship, which is given by the international cultural society to the most deserving junior or senior woman. In addition to being a member of Pi Gamma Mu, national honorary social science fraternity, she has been selected as a pledge to Delta Sigma Phi, the honorary alumni sorority.

Athlete

As well as being a top-flight student this red head from Greentree is also a varsity athlete. For four years she has turned in a striking performance as goalie for the hockey team and has played varsity basketball, being captain in her junior year.

At graduation she will receive her B.S. degree with a major in sociology and a minor in psychology. Her future plans include graduate school and the pursuit of one of her favorite hobbies—traveling.

Meditation

By FLOYD SNYDER

Americans fail to sense the significant truth of reality. This nation under God is becoming a nation without God. Although we inscribe "In God We Trust" on our coins, we are falling to inscribe it in our hearts. If we could keep God as our primary goal, there would be no threat of war or depression. "If God be for us, who can be against us."

The church is a citadel of spiritual inspiration. It can teach us the power of prayer and the need to make God an intrinsic part of our daily lives. The church stands as a strong bulwark against the angry waves of evil presently sweeping across our nation. Through the church, we must learn to place a reliance upon God which will not be shaken in later years.

Our forefathers believed in the inspired Word of God, and their religious faith and simple devotion produced a strong national character. The most difficult and arduous problem we face as Americans is that of retaining this strong national character.

Winter Sports

By BILLY WILLIAMS
Feature Editor

Snow fell on the campus. Books remained unopened. Desks were unoccupied. Dormitories and fraternity houses were empty. Where was everyone? They never returned from dinner. The question was answered by the shouts of college students mingling spontaneously with the shrieks of children.

Albrightians borrowed neighborhood sleds and staged races on blocked streets and on Science Hall Hill. All academic pursuits were forsaken for Jack Frost.

Snow Battles

Various organized snowball fights took place around campus. When two opposing teams met, all snow broke loose. The men were building snowmen, while the women were making snow angels. When everyone was too wet, too cold and too tired to continue, they retreated indoors for a stiff cup of coffee.

The more hardy individuals came out after sufficient revivication and continued to wash faces, pack snow and fortify forts. The conscientious ones, desiring a return to the books, were deterred from their destination by well-aimed volleys. No time for regrets that night. Remorse was meant for the morning after, when tests weren't studied for and lessons weren't prepared.

The snow came down in appreciable amounts, but it disappeared too quickly. However, it was around long enough to prove that sophisticated and intellectual college students are still children. Let's hope that youthful spirit can be carried throughout life.

Lions Host Lebanon Valley Quintet

IN THE
LION'S DEN



By LEE SWARTZ, Sports Editor

With three tough games under its belt, Albright's basketball team looks forward to somewhat easier competition in the future. Lebanon Valley fields one of the smallest college teams in the state. The overall height average for the Dutchmen is less than 6-0.

The difficulty in the first two contests seemed to be in the mechanics of the game. At Scranton, the Lions got into trouble early on fouls and two of their big men had to be held out for part of the game after accumulating three personals apiece. In the Scranton and LaSalle games, there was an average of over 20 mistakes per game, which includes bad passes, violations, fumbles and lost balls. This is 20 opportunities that the opposition was given to score and 20 chances denied to the Lion cagers because of faulty ball handling. At one stage in the Scranton game, the Royals scored 12 points with Albright failing to get a shot at the basket due to interceptions and bad passes. Scranton played the courteous host, accepting gratefully the gifts handed to them.

Lack Balance Of Scoring . . .

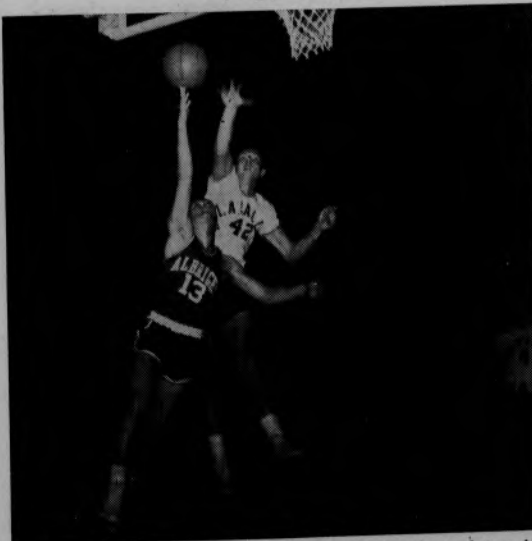
Another trouble is the failure to have balanced scoring in the front court. In two games the two forwards and center have scored a total of 29 points, an average of five points per man. The percentage drops even further when the one forward's 18 points are subtracted from the total. Last year Albright with a 10-15 record, had four men scoring double figures. Bruce Riddell, 16.1, Fred Dietzel, 11.9, Jim Foreman, 11.5 and Merrill Eckhart, 11.4. Riddell and Foreman having graduated, Dietzel and Eckhart have taken up the scoring slack, but two men cannot fill the shoes formerly worn by four men. It is the hope of the team that a few games will provide the experience needed for a successful season.

The Lions are members of the Middle Atlantic Basketball Conference, Northern Division, for the second year and will play 16 conference games. Last year they ended the season with an 8-7 conference record. The winner of the conference is eligible to compete in the NCAA college tournament as the Middle Atlantic States representative. Conference opponents for this year are Scranton, Gettysburg, Moravian (twice), Swarthmore, Juniata, Hofstra, West Chester State Teachers, Wagner, Lebanon Valley (twice), F&M (twice), Elizabethtown, Dickinson and Wilkes. With a little improvement, the Lions should roll up a commendable conference record.

Albright Grad Makes Good . . .

I saw an Albright grad play basketball the other day. He played in pretty good competition too. He's a fellow by the name of George Conrad; perhaps some of you will remember him. He holds about every court record here at Albright. Well, George hasn't slowed down any since then and is rapidly making a name for himself in the Eastern Professional Basketball League, playing for the Reading Keys. Conrad has scored 68 points in the Key's first four games for a 17-point average. The games are played at the Armory, Rose and Walnut streets. Check the paper for playing time and come on out and support the Keys. They play a thrilling brand of ball.

Sell(ing) Short!



Barclay Sell, Albright reserve guard (13), tries for a layup shot against LaSalle, but finds himself pressured by an Explorer giant. The towering LaSalle quintet controlled the boards to roll up an 83-35 victory over Albright in a recent game at the University of Pennsylvania Palestra. (Staff Photo.)

Cagers Crush Seton Hall For First Win, 75-68

(Ed. Note: Although the Seton Hall game was played after the deadline for this week's paper, because Albright scored a major upset, The Albrightian substituted this story for the original court review. Of necessity, however, the other stories on this page will not include mention of the Seton Hall game.)

The Albright Lions opened their home season Wednesday against Seton Hall with a 75-68 win, after suffering two straight setbacks on the road. The Lions lost to Scranton in the season opener 92-74, and to LaSalle 83-55 in the Penn Palestra.

The undefeated Pirates, ranked fifth in the Eastern pre-season rankings, were rudely shocked as the Lions forged into the lead from the start, fought off several ties, and emerged victorious, 75-68.

The Lions controlled both backboards, stopped the Hall's 6-10 All-American candidate Tom Cross, and put four men in double scoring figures, with Fred Dietzel leading the way with 22 points.

Freshman Wayne Hudson hit for 13 points in the first half as the Lions gained an early 14-6 lead and a 37-30 halftime lead. In a brilliant display of shooting, the Lions connected on 17 of 37 shots from the floor in this half.

The Pirates stormed back in the second half to tie the game four times as reserve Connie Egan tossed in six important points. But Hudson converted a foul and Captain Merrill Eckhart scored a deuce to open a 62-59 lead. Phil Samuels scored for the Hall to make the score 62-61, but the threat died.

Stan Kaminski dropped in a score, Eckhart contributed a set, and Dietzel rattled off six points in a row, as the Lions moved to a 72-61 lead. A last ditch effort by the Pirates fell short at 74-66.

Pirate coach "Honey" Russell, in a statement to *The Albrightian*, put it thusly: "I've seen Albright play twice before, and I thought they were pretty fair, but tonight they were really outstanding. They outplayed us from start to finish, and we lost."

Seton Hall			Albright				
G.	F.	P.	G.	F.	P.		
Samuels, f	5	0	13	Storms, f	3	0	6
Bucklew, f	5	0	10	Kaminski, f	8	1	17
Roberts, f	2	2	6	Marrella, f	0	1	3
Epstein, f	3	3	9	Hudson, c	6	3	15
Cross, c	3	3	9	Dietzel, g	11	0	22
Szezech, g	2	0	4	Eckhart, g	7	0	14
Berthge, g	4	1	9				
Rowley, g	1	2	4				
Egan, g	3	0	6				
Totals	28	12	68				35 5 75

VS. LaSALLE

Albright			LaSalle				
G.	F.	P.	G.	F.	P.		
Kaminski	4	2	10	Bentivoglio	4	2	10
Hudson	0	1	3	Eltringham	4	2	10
Storms	1	3	7	Ferner	0	1	3
Eckhart	6	4	16	Keith	6	1	19
Dietzel	7	2	16	Girvan	3	4	10
Sprayd	0	0	0	Albright	3	0	6
Finestone	1	2	4	Donigal	5	3	13
Kelly	1	0	2	Neyer	2	0	4
Eberle	0	2	4	Brolly	0	0	0
Greene	0	0	0	Levery	0	0	0
Sell	0	0	0	McKeamey	1	0	2
				Missimi	2	0	4
				Kerecz	1	0	2
				Taylor	0	0	0
Totals	20	15	55	Totals	36	11	83
Albright	25		30-55		41		42-83
LaSalle	41		42-83				

VS. LaSALLE JAYVEES

Albright JV's			LaSalle JV's				
G.	F.	P.	G.	F.	P.		
Moylan	0	0	0	Rameska	4	3	11
Smith	3	6	12	Herdlein	11	7	29
Reinhardt	4	1	9	Welsh	6	2	14
Preston	3	2	8	Tyler	1	0	2
Quinn	2	0	4	Murdeck	0	0	0
VanDine	2	0	4	Genoni	2	2	6
Varano	1	0	2	Grevia	3	0	6
				Troppea	3	0	6
Totals	20	15	55	Totals	29	14	72

VS. SCRANTON FROSH

Albright JV's			Scranton Freshmen				
G.	F.	P.	G.	F.	P.		
Smith	0	2	2	M. Abdo'a	4	2	10
Reinhardt	4	6	14	Cunningham	3	4	10
Moylan	0	3	3	Francis	7	0	16
Preston	2	0	4	Murdeck	0	2	2
Quinn	2	0	4	Grachon	1	6	13
VanDine	3	1	7	J. Abdo'a	1	0	2
Varano	0	1	3				
Totals	9	13	31	Totals	21	9	51

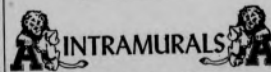
Jay Vees Drop Two Contests On The Road

The Albright junior varsity, coached by Howard (Hops) Guldin, opened its 1957-58 19-game schedule at Scranton recently, where it dropped a 51-31 verdict to the Scranton frosh. Travelling to Philadelphia on the seventh, the Baby Lions' record went down to 0-2, as they lost to LaSalle frosh, 72-55.

Forward Cordell Reinhardt paced the Lion offense in the Scranton game, gathering 14 points. Center Ken VanDine took the runner-up position with seven points, while guard Sam Preston chipped in with four points.

Quinn Leads Attack

Guard Chuck Quinn scored 20 points against LaSalle to lead the Lion offense, with forward Charlie Smith coming in second with 12 points. Reinhardt had nine points to take third place.



Intramurals Begin; APOs Defend Title

The opening round of the 1957-58 intramural basketball program got underway recently under the direction of Coach John Potskian. As it has for the past six years, the program includes two leagues, A and B.

A league, containing the Zetas, Kappas, Pi Tau's, APOs and Independents, will play a two-part schedule. A winner will be decided in each with the champions of each meeting for the final title.

In the opening round of A league, the Zetas topped the Kappas 46-21. Frank Hoffman led the winners with 15 points, hitting seven from the floor and one from the foul line.

Townley Hits 22

While Pi Tau drew a bye in first round play, the APOs defeated the Independents 53-44. Dave Townley was high man for the winners with 22 points. Brook Moyer helped the victors with 14 while Sam Rumford contributed 12.

In the second round, the defending champions, APO, went into the lead by taking the Kappas 37-30.

Long Leads Independents

Pi Tau entered the fray by handing the Independents their second straight loss 51-37. Leroy Long hit the cords for 20 points for the losers.

In B league action Pi Tau took the Dorm team 28-25. The Schoolies dropped APO 33-25, the Red Devils routed the Contemporaries 41-18 and the Gladiators forfeited to the Nuggies.

In the second round the Red Devils moved out the Zetas 27-26. The Dorm team came through with a 45-39 win over the Nuggies, the Contemporaries beat the Pikers 21-14 and Pi Tau edged APO 30-29. The Gladiators and the Kappas forfeited.

Visitors To Field Small, Fast Squad

The Flying Dutchmen of Lebanon Valley basketball will be entertained by Coach W. G. Renken's Albright courtmen tomorrow night in the fieldhouse at 8 p.m. Prior to the varsity encounter, the junior varsity squad will wage war beginning at 6:45 p.m.

Lebanon Valley, coached by George "Rinso" Marquette for the sixth consecutive year, will be meeting the Lions in the 65th renewal of the Albright-Lebanon Valley series. The Lions are the Flying Dutchmen's oldest court rival since the sport was inaugurated in 1904 at Lebanon Valley.

Over the seasons the Blue and White annexed 30 games, while Albright has won 34 times.

Four Lettermen Return

Four returning lettermen comprise the nucleus of this year's LVC squad which lost three starters through graduation. Forward and captain Don Grider will be heavily relied upon for rebounds and will attempt to improve his 145-point total of last season.

Grider will probably be joined by Aubrey Kershner, in his first year of varsity play, at the forward slots. Senior lettermen Pete McEvoy and Bob Dinerman, joined by sophomore letterman Barry Skaler, the smallest man on the team at 5-7 and who amassed 130 points in his freshman year at a guard position, round out the starting team.

Bill DeLiberty, Sam Butz, Marty Mihalek, Doug Ross, Glenn Coates, and Allie Kohler comprise the remainder of the varsity. Larry Jenkins and Steve Wisler are the junior varsity standouts.

Lock Size

The Flying Dutchmen are characterized by good speed and accuracy in ball handling, however, they lack rebounding height. Don Grider is the tallest probable starter at 6-0. Coach Marquette has been forced to rebuild his entire team as a result of graduation losses.

Lebanon Valley has a 20-game schedule this season. In its opener it was trounced by Muhlenberg College, 79-59, in Allentown. They recovered to defeat PMC on the home floor in an 84-79 contest recently.

Matmen Top First Foe

Albright's second wrestling team recorded the college's first mat victory as it defeated the visiting Lebanon Valley grapplers, 28-8 recently.

In the first match, Frank Chavez (123 pounds) pinned John Lanese in 2:46. Ron Greene (130 pounds) pinned Robert Daigneault in Albright's fastest time of the day, 1:54.

Opponents Pinned

Terry Stoltz decisioned Don Bailey 6-0, for another three points, and Gerry Knapp recorded the third Albright pin when he pinned Bob Sensenig in 6:30. George Zug also won via the pin route over Tony Dezits in 4:50.

In the most exciting match of the day, LVC's Dave Miller decisioned Albright's George Morforgen 4-3 to pick up the first LVC win of the afternoon. Bud Kauffman, at 177 pounds, put the Lions back on the winning path, pinning Gary DeHart in 7:00.

The unlimited match saw LVC's 310-pound Ken Longenecker pin 190-pound Bill Germain in 1:19.

Tomorrow the Lions host to the University of Delaware grapplers.

York Announces Student Council's Unanimous Choice Gains NSA Slot

Organization Assists In SC Coordination

The president of Student Council has announced that a unanimous vote by Council members recently secured Student Council membership in the National Student Association.

Frank York, '58, said that final plans for membership in the National Student Association were realized at a recent Student Council meeting. Marilyn Hogg, '61, was appointed NSA coordinator. Her chief duties will be to receive and dispatch all correspondence between Student Council and NSA.

National Group

NSA is a national organization composed of representatives from college and university student governments. Its purpose is to discuss on-campus problems and offer suggestions for their solution. It also functions as an advisory body to its members' local student governments.

In addition, the National Student Association sends out publications concerning student government, spearheads leadership development programs and sponsors travel tours for students. The possibility of NSA providing for a discount service on college supplies to students has also been mentioned.

York said he felt that membership in NSA would be a boon to the passage of Student Council legislation here at Albright. He said that perhaps the question of Saturday afternoon library hours could be handled effectively through NSA.

Help Cited

York cited the "portfolio system" as an example of how past membership in NSA has paid off. Under this system, the chairmen of student committees are required to record the activities of their office so that succeeding officers will have a broader knowledge of their new duties.

Prior to last year Student Council had been a member of NSA, however, lack of funds prevented membership last year. Student Council members will be selected in the near future to represent Albright at the NSA meetings. The district office of NSA in this area is located in Philadelphia.

Christmas Play Given In German

Josephine Seyfert, '58, headed the cast, as Mother Mary, of a traditional German Christmas play which was presented by the German department recently in White Chapel Hall.

Featured as Joseph and the Angel Gabriel in the play, "Ein Krippenspiel," were Wilbert Wollenhaupt, '59, and Charles Wolfe, '60.

The play, which was presented in German, was supported by a piano and string quartet accompaniment. Dr. Gerrit Memming, professor of German, took charge of production and F. Robert Reeser directed the musical selections.

In The Cast

Others in the cast were: Dale Moyer, '58, as the reader of Scripture; Earl Adams, '60, innkeeper; Eustace Renner, '59, Stanley Michalak, '61, and Donald Price, '61, the three kings; and Richard Reidler, '60, George Withers, '60, Ernest Kasprovicz, '59, and Girard Stish, '61, the shepherds.

The angels were portrayed by Phyllis Dinger, '61, Ruth Hansen, '60, Annette Kiesling, '58, Janice Kintz, '61, Edith Koch, '61, Ruth Marti, '61, Luise Sievers, '61, Mary Lou Speicher, '60, Nancy Trumbauer, '61, Dorothy Werner, '61, and Mary Ann Ziegenfuss, '61.

Withers was also in charge of costumes. Mary Ellen Wray, '58, and Richard Matthews, '59, handled the lighting. Mrs. Charlotte G. Price, graduate assistant in history, assisted Dr. Memming.

Alumni Clubs Place Signs On Main Roads

Signs signifying that Reading is the home of Albright College will be placed at all heavily traveled roads entering Reading by the area alumni clubs of Albright.

The signs, six of which have already been purchased, will be placed on Route 22 east, the Allentown Pike; Route 122 east, the Pottsville Pike; the Kutztown Road; Route 83 north, the Bernville Road; Route 422 west, the Harrisburg Pike; and Route 222 south, the Lancaster Pike.

Other Locations

Signs will also be placed on Route 122 south, the Morgantown Road; Route 422 south, the Lindbergh Viaduct; Perkiomen Avenue, the Philadelphia Pike; and the Pricetown Road.

Arrangements are now being completed about the property on which the signs will be placed.

Students To Operate Gas Station Tomorrow

Seeking funds to publish a literary magazine this spring, members of the student body will operate a Gulf service station tomorrow. The station is located at 8th and Spring streets in Reading.

The Agon was not published last year because of a lack of money. Student Council, after being asked by members of the magazine's staff for suggestions on obtaining the necessary funds to print such a publication, decided to turn the gas station project, offered to Council, over to The Agon.

Robert Poff, '60, is chairman of a Council committee that will direct tomorrow's operation. The students will receive the profits on gas and other items sold during the day to customers from Albright College.

IRC Model UN Set Tomorrow

The International Relations Club will sponsor its third annual Berks County High School Model United Nations General Assembly tomorrow from 9 a.m. to 4:30 p.m. The secretary general will be Philip Eyrich, '58; Robert Peckham, '59, will be his assistant.

Sandra Miller, '60, will be the head of the secretariat. The other officials of the Model UN will be students chosen from the high schools taking part.

Opens 9:30 A.M.

Everyone attending the Model UN will meet in the first session at 9:30 a.m. in Krause Hall. At this time the group will be addressed by a member of the United Nations in New York City. After this session the members of the Model UN will attend one of three committee meetings to be held in the administration building.

The three questions for this year's Model UN, each discussed by a separate committee, are the United Nations report on Hungary, the question of Cyprus, and disarmament. The committees will meet both before and after lunch.

The resolutions produced by the committees will be voted on during a final plenary session held in Krause Hall at 3 p.m.

Between 135 and 150 students will represent 13 high schools in the Model UN.

Pi Tau Rush Dance Scheduled For Tonight

The annual Pi Tau Beta fraternity rush dance is scheduled for tonight from 9 p.m. to 12 p.m. at the Abraham Lincoln Hotel on North Fifth Street in Reading.

Chairman of the committee, Al Ellis, '58, has announced that invitations have been extended to all freshman men and transfer students. Orchestration will be provided by the "Rhythmals," while the "Betas," the fraternity quartet, will present the entertainment.

Dining Room Named Van Driel Room

The small dining room has been renamed by an action of the administrative committee. The proposed title is The Van Driel Room. This action was taken because since 1926 the Albright dining hall has been in the capable hands of the Van Driels.

The oldest brother, Jan Van Driel, began as chief steward 1926 through 1942. During the 1930s Leonard Van Driel, the present steward, and another brother, Peter, were in his employ.

Van Driel Family

Jan Van Driel was in the army from 1942 to 1944. Upon returning from the service he became ill and died shortly afterward. At present, Leonard and his sister Josephine are the only two of the family working at Albright.

The Van Driel Room is used as a dining room for the kitchen employees and also for small private lunches for the alumni and civic groups.

Patronize Our Advertisers

Magic Is Fun

Pocket Tricks
E Z
to do
Goofy Gifts
at the

Strand Trick Shop

1009 N. 9th Street



MANHATTAN 100% COTTON OXFORD
NO IRON, DRIP-DRY
WHITE SHIRTS

Here's the college man's delight! Wash and wear white shirts with button-down collar. Dries quickly. Needs no ironing. Repels wrinkles.

\$5.95

Cull's Koch

622 PENN STREET

SEE THE NEW

CAMPUS FASHIONS

AT

DANNY GOODMAN'S

University Shop

549 Penn St. Reading, Pa.

Bard's

Birch and Amity

SNACKS

SANDWICHES

and

FOUNTAIN SERVICE

A William Goldman Theatre
STRAND OPENS WED., DEC. 25
9th & Spr. FR 5-6604 SEATS NOW ON SALE

The World's Most Honored Show

MICHAEL TODD'S

Around the World
in 80 days



ACADEMY
AWARD
PICTURE

DAVID NIVEN • CANTINFLAS • ROBERT NEWTON
SHIRLEY MacLAINE • Featuring 44 "Cameo" Stars

SHOW TIMES & PRICES

MATINEES:
Dec. 25, 26, 27, 30 & 31 at 2 P.M. \$1.49
Sat., Dec. 28 & Wed., Jan. 1 at 2 P.M. \$2.00
Sundays, Dec. 29 at 2:30 P.M. \$2.00
After JAN. 1, MATINEES Wed., Sat. & Sun. 12:00 A.M. \$2.50
New Year's Eve at 8 P.M. \$3.50

William Goldman STRAND THEATRE, P. O. Box 1578, Reading, Pa.
Mail Orders Promptly Filled for First 4 Weeks

Please send _____ Orchestra Tickets at \$ _____
for Mat. _____ Ev. Performance on _____ (date)

NAME _____
ADDRESS _____ CITY _____

Enclose Check or Money Order (No Stamps) Payable To Strand Theatre
Enclose Self Addressed Stamped Envelope

WSA Tea Planned For Selwyn Hall Today

Today, from 3 p.m. to 5 p.m., Selwyn Hall will be the scene of the annual Women's Student Association Christmas Student-Faculty Social, open to all faculty members, students and administration personnel.

The co-chairmen, Margaret Brookes, '60, and Nance Foote, '60, have provided, through several committees, refreshments and entertainment.

15,000
Paper-Backs
THE BOOK MART
Corner 6th and Court Streets

Keepsake
Diamond Rings



ASTOR JEWELERS
742 PENN STREET
READING, PA.

GO
Christmas
Shopping
by
BUS
Reading Bus Co.

MEET THE GANG
at the
NEW
COLLEGE INN
14th and UNION STREETS
Steak and Italian
Sandwiches
We Deliver — Call FR 3-9344

CHRISTMAS GIFTS at
JOHN MAZZO
6th STREET AT FRANKLIN

NEED MONEY?
Earn \$200 During
Xmas Vacation
MUST HAVE CAR
and
ENJOY WORKING WITH
GIRLS 18 to 23 YEARS OLD
For further details write
COLLEGE DIRECTOR
119 E. Butler Avenue
Ambler, Penna.

ACT NOW
DON'T WAIT