

THE WELCOME MAT

Welcome to Albright, Freshmen!

It's Saturday, May 4, 1982. . . Do you know where your classes are?

Lifesports Center nears completion 12/2

Dedication planned for October 16

Students have been anxiously awaiting the completion of the Lifesports Center since the groundbreaking last summer. The building is now in the finishing stages and should be ready for use this semester according to Wilbur Renkin director of athletics. The builders have promised beneficial occupancy, meaning that the building is not completed but is usable, by September 8. However, the racquetball courts will not be ready until after September 27. The final inspections and paperwork may cause some small delays. The dedication is scheduled for October 16 to coincide with the homecoming festivities.

Coach Renkin feels that the new building will greatly expand Albright's athletic facilities and provide a larger degree of flexibility. A track, one tenth of a mile in length, will surround four tennis courts which can also be used as volleyball or basketball courts. Nets for different activities can be set up within the same building. The Lifesports Center will also contain a batting cage, a batting machine, new locker rooms, four racquetball courts and a complete Fitness Center including an exercise room and an examination room.

The Lifesports Center, according to Coach Renkin will be used for recreational purposes. Spectator events will still be held in the gymnasium enabling students to use the Lifesports Center for other activities while a game is taking place. Another advantage made possible by the new complex is that the teams will be able to have preferred practice times such as after classes. The Lifesports Center should lead to expanded intramural as well as team programs and be a great asset to Albright's athletic facilities.



Even though this is not the view of the Lifesports Center you have from your dorm window today, it might be a good idea to show you what it looked like just a few short months ago. A reminder for some, a blessing for all.

Effects of Open Forum still felt on campus

Despite several tense moments and some hot words between students which quickly receded, cooperation was the key word at the Open Forum held May 8, 1982. The event, sponsored by the Image Committee was attended by students, faculty and administrators concerned with Albright's social, academic and administrative problems.

John Diamond, chairman of the Image Committee, stated that the purpose of the forum was not to

be a gripe session, but a chance for the Albright community to discuss solutions and recommend action. A summer has passed since then and nearly all of the issues involved have been acted upon.

Eugene Lubot, academic dean, commented upon changes and revisions that reflect his office. He stated that the library's weekend hours have been extended as a result of the forum. Formerly open until 5 pm Saturdays and opening at 2 pm on Sundays,

the library will now remain open until 10 pm Saturdays and open at noon on Sundays. Finding librarians for the new hours is a problem, but he added that part-time faculty members and resident directors may provide a solution.

In addition to extended hours, the lobby of the library will remain open 24 hours a day, seven days a week to accommodate late-night students.

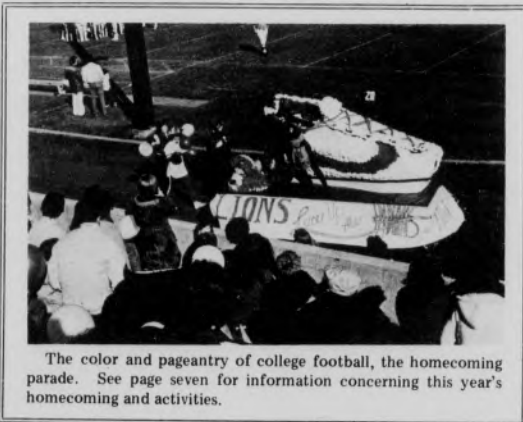
The replacement and addition of books in an 'inadequate' library was also a major topic for discussion at the May gathering. Dean Lubot contributed the following information:

"In March, 1981 the library conducted two separate inventories during Spring break. In both cases a random sample of book titles was selected and the shelves and check out cards searched to see if the books could be accounted for. The searches revealed that approximately 6.7% of books had disappeared during a period of approximately 20 years. While any loss causes concern, the level of loss does not seem to justify an expensive electronic security system. However, a proposal to have a student checker plac-

Opening Convocation

Chapel Auditorium 4:00 p.m.
Wednesday, September 8, 1982

Convocation is the formal, ceremonial opening of the academic year. The faculty will be dressed in their academic gowns—your only chance to see them so attired except for commencement. Academic achievements by students will be recognized. For freshmen, recognition will be given to those designated Walton Scholars, our most prestigious academic scholarship which is named in honor of Dr. George Walton who served as dean at Albright for 37 years. Upperclass students who have achieved a cumulative grade point average of 3.70 or above will be inducted as members-in-course of the Society of Jacob Albright Scholars. The academic Dean will make a few remarks about recent academic developments and faculty activities, and Dr. Ruffer will give an address which formally begins the academic year 1982-83. There will be music, color, and pageantry (including a candle-lighting ceremony). This will be the first of many memories you will build while at Albright, and they will all add up to being a part of the Albright tradition. I hope you won't miss the chance to attend the fall 1982 Albright Convocation.



The color and pageantry of college football, the homecoming parade. See page seven for information concerning this year's homecoming and activities.

On the Inside

New Administrative Posts 2	Accounting Seminar 3
Art Gallery Exhibit 3	Welcoming Notes 4
Student Named Trustee 3	New Faculty 6

continued on page two

Four to augment administrative staff



Pamela E. Brewer

The enlargement of already existing campus facilities and the creation of a new one have caused the juggling of some administrative posts and the emergence of several new faces on campus.

Pamela Brewer, the assistant dean of students for residential life, assumed the position left open after the departure of Randy



Dr. Timothy E. Ring

Miller in January. Mrs. Brewer received the bachelor of arts degree from the University of North Carolina at Chapel Hill and master of education in counseling from James Madison University. She served as housing coordinator and hall director as well as research consultant and counselor at the university's Counseling and Stu-

dent Development Center.

Associate Dean of Students Virginia Scullion, former director of Albright's Counseling Center, has assumed the position of director of Career Planning and Placement Services. She received the bachelor of science degree in biology and secondary education, the master's degree in counseling, and is continuing post graduate work at Temple University.

The new director of the Counseling Center is Associate Dean of Students Dr. Timothy Ring. He holds the bachelor of science degree in elementary education from Western Connecticut State College and the master of education in counseling from Central Connecticut State College. He earned the doctor of education in counselor education from the University of Arkansas where he held graduate assistantships in the department of counselor education and the counseling unit of the Student Development Center.

Janet Catalan, a 1977 Albright alumna, has been appointed admissions counselor. She has earned the master of arts degree in counseling from Kutztown State College, and was formerly a counselor/therapist at the Berks County Youth Counseling Center. For the past three years her responsibilities included the counseling of adolescents and young adults for drug and alcohol related problems.



Janet L. Catalan

Miss Catalan is filling the position opened by Jim Fenton who left to attend the Wharton School of Business Graduate School.

The director of Albright's new Psychological Services Center, located in Teel Hall, is Dr. Gilbert Foley. He received the bachelor of arts degree, magna cum laude, from Albright in 1969, and the master and doctor of education degrees, and certification in school psychology from Lehigh Univer-



Dr. Gilbert M. Foley

sity. He was previously director of the Family Centered Resource Project for the Berks County Intermediate Unit.

The new face at the Campus Center desk is Karen Fundyga, assistant to the director of the Campus Center. She is a graduate of Reading High School, and was Miss Reading Fair in 1976. Miss Fundyga was employed by Bridal Fashions before coming to Albright.

Forum

continued from page one

ed at the door will be presented to SGA for discussion in the fall."

"With regard to expenditures for library materials, the statistics seem to indicate we are spending about as much as other colleges like Albright. We are continually trying to do better and this year's book budget is more than 10% larger than last year's, and we are adding about 5,000 books a year. We are continually trying to coordinate our ordering better so that materials ordered are what

students need for assignments. For example, we went through the inter-library loan requests last year to see what materials were most requested on inter-library loan, and we ordered them for our library. We need to continue working with students and faculty to get an even better match of assignments given and materials available."

When questioned further on the subject, Dean Lubot emphasized that he wished to carefully approach the proposal for a checker at the door of the library. He feels

it should not be considered an imposition by the student body. It must be agreed to be beneficial to the efficiency of the library system.

Finally, he stressed that students could take an active role in equipping the library by approaching faculty members about books they feel the library needs. Each faculty member has a book budget of \$400 which can be used to help fill the shelves of the

continued on page seven

The Welcome Mat

An *Albrightian* publication produced with the cooperation of the Image Committee and Admissions Office of Albright College for the incoming class of 1986.

Editor in Chief
Scott Sax

News Editor
Amy K. Shannon

Composition Editor
Tom Williams

Advertising Editor
Lynne Howells

Layout Editor
Tom Dietsche

Photo Editor
Mark Tafuri

Managing Editor
Kirsten Hotchkiss

Business Manager
Nick Gugie

Special thanks to Mr. Harrie Burdan, Mr. Charles Yeager, Mrs. Janet Gehres, Mr. John Diamond and all who gave their time in the preparation of this publication.

The Welcome Mat was printed by the Ephrata Review of Ephrata, Pa.

Orientation Schedule

—SATURDAY, SEPTEMBER 4—

- 12:30- 2:00 A to M
CHECK IN AND ENROLLMENT -CCL
- 2:00- 3:30 N to Z
- 3:30- 5:30 ORIENTATION GROUP MEETINGS
The time has arrived to meet your orientation leader and group. Locations will be posted on the Communications Board in CCL. Bring meal ticket and pencil/pen.
- 9:00 PLAYFAIR-CCL
Unwind after a long day and meet your classmates in a totally new and unusual way.

—SUNDAY, SEPTEMBER 5—

- 9:00-10:00 PEER COUNSELING
Meet your peer counselor and other classmates at the designated places on campus. Peer counselors will notify you as to these locations.
- 10:00-10:45 TIME MANAGEMENT & EFFECTIVE USE OF TIME
Learn the best ways to balance academics and social life, major subjects and General Studies, how to schedule your time, set priorities and deal with fatigue. Location: your peer counselor will take you to the appropriate area, or check at the Campus Center Desk.
- 1:00- 2:30 BIG "A" PUT TOGETHER
Become familiar with Albright's campus through this group contest. Display your puzzle solving skills—an

continued on page eight



Here's pie in your eye! Pie throwing is one of the many events featured during Spring Fever Weekend, the last break before finals.

The START program

Welcomes the class of 1986!

Help in making career decisions

Although the time period between 1982 and 1986 seems huge right now, it is relatively short when you realize that during these years you must choose a career. The START program is here to help you with this difficult decision by allowing you to speak with Albright alumni who are working in your areas of interest.

Whether you are vague about your career goals or are fairly certain, START has programs from which

you may benefit. If you are interested in a specific job, a one-to-one visit allows you to meet with an alumnus who is working in this area, and if you want to know about several career possibilities, career nights allow you to speak to about six alumni who had the same major but are working in quite varied jobs. As you can see, START can help you make a career choice no matter how uncertain your goals are at present.

For more information about the START program, stop by Sherman Cottage or contact Linda Kutz, Box 763.

Active sophomore named student Trustee

Kimberly Hodgson, daughter of Mr. and Mrs. George Hodgson, 1004 Cedar Lane, Brielle, NJ, has been appointed student trustee by the Student Government Association (SGA) of Albright College.

Ms. Hodgson, a sophomore business administration and English/Communications major, will hold the post together with another student trustee for two years

during which time she will serve as a representative of the student group on the college's board of trustees.

An active member of the Albright Concert Choir and psychology society, Ms. Hodgson also is a student assistant in the Office of Public Information. She is a graduate of Manasquan High School and is pursuing a career

in public relations.

Completing his second year of a similar appointment is senior English concentrator, Brian Belson, son of Mr. and Mrs. Sheldon Belson, 18 Cambridge Road, Turnersville, NJ.

Diffendal announces accounting seminar at Hershey Lodge

A one-day seminar for the accounting profession on pensions, profit-sharing, and estate planning will be held jointly by the Pennsylvania Society of Public Accountants (PSPA) and the Albright College Office of Continuing Education, Monday, September 13, at the Hershey (PA) Lodge and Convention Center, Judith A. Diffendal, continuing education coordinator, has an-

nounced.

Sponsored by the Central and South Central Chapters of PSPA, the seminar will offer a comprehensive morning session, at 8 am, on "Accounting for Pension and Profit-Sharing Plans," to include an update and review of such plans for small businesses from an accountant's point of view.

The afternoon session, scheduled for 1:30 pm, will provide participants information on plan-

ning options for the small businessman and guidelines for evaluating individual client needs, Ms. Diffendal outlined.

Full attendance at the seminar can result in the granting of eight continuing professional education units: four in accounting and four in business advisory services, she added.

The presentors will be Aman M. Barber, Jr., chief executive officer of Beyer-Barber, Inc., Allentown, an employee benefit and actuarial consulting firm, and Richard F. Boyer, Esq., Bethlehem attorney and president of the Lehigh Valley Estate Planning Council.

Barber offers 22 years of expertise in the field, including a specialty in deferred compensation planning. Boyer is a popular seminar lecturer and serves as adjunct professor in accounting at Lehigh University.

Additional information relative to registration and seminar particulars is available from the Albright College Office of Continuing Education, P.O. Box 516, Reading, Pa. Enrollment is limited to the first 200 registrants, Ms. Diffendal said.

Gallery's fall show exhibits work in sound

"Revolutions Per Minute (The Art Record)" will open the Albright College Freedman Art Gallery Fall exhibition schedule Friday, September 10, at 6 p.m. The exhibit presents 21 original sound works by contemporary American and European artists, and first-run prints of album cover proposals created by each artist. Throughout the course of the show, the public may listen to all twenty one sound pieces.

Works by the following artists are included in the exhibit: Vincenzo Agnetti; Eleanor Antin; Ida Applebroog; Conrad Atkinson; Joseph Beuys; Chris Burdan; Douglas Davis; Jud Fine; Terry Fox; R. Buckminster Fuller; Helen Mayer Harrison/Newton Harrison; Margaret Harrison; Komar & Melamid; Piotr Kowalski/William Burroughs; Les Levine; Edwin Schlossberg; Thomas Shannon; Todd Siler; SITE; David Smyth; and Hannah Wilke.

Released by Ronald Feldman Fine Arts, Inc., New York and the Charing Hill Co., Ltd., "Revolutions Per Minute" is available in both deluxe and mass editions. Each includes an introductory essay by Robert C. Morgan.

The Freedman Gallery, open to the public free of charge, is located on the Albright College campus at 13th and Exeter Streets. Gallery hours are: Monday through Friday, 12 to 4 p.m.; Tuesday, 6 to 8 p.m. in conjunction with the Albright Film Series; and Sunday 2 to 5 p.m.

Additional information about the exhibit or particulars about gallery tours for groups is available from Ms. Tannenbaum at 921-2381, extension 348 or 312, she added.

Wanted...Part time employee to put up posters during 1982-83. Two to ten hours/month, \$4.50/hr. Send name, address, phone number, and class year to: Mr. Fenton, 152 Temple St., 701, New Haven, CT 06510

LSAT Classes at Muhlenberg College

PREPARE FOR:

**MCAT • LSAT • GMAT
SAT • DAT • GRE • CPA**

Classes for the October LSAT starting September 7
GRE/GMAT classes starting Mid-September

- Permanent Centers open days, evenings and weekends.
- Low hourly cost. Dedicated full-time staff.
- Complete TEST-N-TAPE[®] facilities for review of class lessons and supplementary materials.
- Small classes taught by skilled instructors.
- Opportunity to make up missed lessons.
- Voluminous home-study materials constantly updated by researchers expert in their field.
- Opportunity to transfer to and continue study at any of our over 105 centers.
- FREE introductory lesson at your convenience

OTHER COURSES AVAILABLE

**SSAT • PSAT • SAT ACHIEVEMENTS • ACT
GRE PSYCH • GRE BIO • MAT • PCAT
VQE • ECFMG • FLEX • NDB • RN BDS
SPEED READING**



**Stanley H.
KAPLAN**
Educational Center
TEST PREPARATION
SPECIALISTS SINCE 1938

Call Days Evenings & Weekends
(215) 435-2171

Masonic Temple Bldg.
1524 Linden Street
Allentown, Pa. 18102

For Information About Other Centers In More Than 105 Major US Cities & Abroad
OUTSIDE N.Y. STATE CALL TOLL FREE 800-223-1782

Welcoming Notes

Psychology

Welcome back! The Psychology Department is looking forward to an innovative and exciting year. A great deal of planning has gone into the opening of the Psychological Services Center on the second floor of Teel Hall. The Center will offer assessment and intervention services as well as continuing education growth experiences for individuals and families in the Reading area.

The department has also purchased a computerized Biolab which measures, records, and analyzes various kinds of physiological data. Research possibilities are endless. Come visit us in Teel Hall.

—Marsha Green, Chairman
Psychology Department



Religion

The center for concern in all education should be the learner, the developing person...Welcome to that process of development at Albright! Along the way, there's much more to be gained than 'accumulated knowledge'...there's self-knowledge and the search and finding of meaning.

We're here to help...in class through the study of the role of religion in human experience...out of class through listening, reacting, working together.

We're on the ground floor of the Chapel...check us out...the Albright Department of Religion.

William Marlow, Chairman
Department of Religion



Biology

The Biology Department is ready to aid students in selecting, achieving and preparing for, and being placed in some career goal. Get acquainted with us, even though you may not have some faculty in class now.

Our wide choice of advanced science courses, and the Program of General Studies are excellent preparation not only for a career goal, but also to learn how to get along with all types of people. Practice and develop your leadership qualities. He/she who expects to be educated just from books and lab session won't!

—Edwin L. Bell, Chairman
Department of Biology



English

The English Department welcomes the incoming Freshmen and the upperclassmen. The members of our department have been busy this summer teaching and working on a variety of academic projects and vacationing. We are looking forward to meeting the incoming Freshmen and to renewing acquaintances with upperclassmen.

—J. W. Woodward, Chairman
English Department



Physical Education

The members of the Department of Physical Education and Athletics welcomes the class of '86. We hope everyone from the freshmen class enjoys and benefits from one or more of our program offerings.

Albright college students have a history of being active in our volunteer programs. Better than 26% of our students participate on an intercollegiate team in a given year, and over 67% participate in intramurals. Our new facilities should encourage even greater participation by a large number.

If the freshmen support the Albright teams as have their predecessors, we will continue to brag about the attendance at our games being the best in the country. Winning the Sam Schoenfeld Sportsmanship Award regularly is testimony to our positive support.

We look forward to getting to know each and every member of the class of 1986 this Fall.

—Wilbur G. Renken, Director
Physical Education and Athletics



Foreign Language

The MFL Department would like to welcome freshmen and returning students. This year we are especially excited about the Dartmouth Intensive language pilot project which will involve 20 elementary students and 2 teaching assistants. Dr. Donna Shute is in charge of the program.

Our other language classes, while not as intensive as the DILM method, will continue to use the target language from the first day of class.

We hope your foreign language study will be a stimulating and exciting change-of-pace for you this year.

— Ann V. Myers
Chairperson, MFL

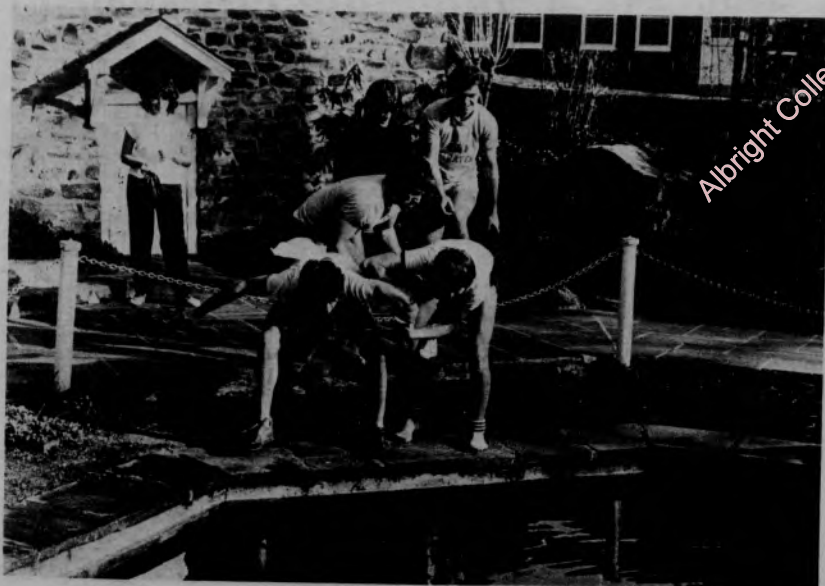


Nursing

The Nursing Faculty would like to welcome you to Albright and to a stimulating and intellectual study of the process of nursing. Albright offers a four-year baccalaureate program directed toward preparing nurse practitioners at the baccalaureate level. The program offers you a variety of learning experiences that are directed toward developing clinical competence, critical decision making and creative strategies for today's health care problems. One of the nursing program's strongest aspects is its development of leadership skills. Both the theory and methodology of leadership is emphasized. Students work with health care providers and consumers to identify needs for change in today's complex health care delivery system. Central direction of this leadership experience is helping the student to identify and develop leadership abilities, develop creative strategies for change, and effecting organized change in a complex social system.

Research is another strength of the nursing program. Research is integrated throughout the program. Last year Albright became the first school in this area to obtain a chapter of Sigma Theta Tau which is nursing's national honor society. Albright's chapter is called Zeta Tau and is directed toward encouraging scholarship, intellectual pursuit, leadership and research in nursing. If the nursing faculty had to describe the nursing program in one or two words they would say "Creative and scholarly." The nursing program will prepare you to assume a multitude of roles in today's health care system and the future's societal adhocrcy. The nursing program is located in Teel Hall. Please feel free to drop in and talk with the faculty. We will be happy to spend some time and chat or share in a critical dialogue of today's multifaceted ethical and human dilemmas of the health care system. Again, welcome to new students and those returning. We're happy to see you all.

— Rena Laurence



Chemistry

The Chemistry faculty welcomes the class of '86 and all returning upperclassmen to the campus and looks forward to sharing with you the pride and joy that will accompany the personal and intellectual growth that is being projected for you during this new academic year. This year the department's two major areas of concentration, chemistry and biochemistry, will reach higher plateaus in quality of instruction. Upperclass chemistry concentrators can look forward to a smooth running of the one and one-half years of the recently developed integrated chemistry laboratory experiences, and biochemistry concentrators can look forward to working in the new biochemistry lab as we now complete the National Science Foundation project which supported the purchase of the highly sophisticated instrumentation used in this lab. Also, all departmental concentrators will enjoy "doing computer graphics" with one of two departmental GIGI terminals and color monitors recently acquired from Digital Equipment Corporation under a special educational grant from DEC to inaugurate a program in computer graphics education in the physical sciences and mathematics departments. The Department is pleased to announce that all of the 25 departmental concentrators in the class of '82 were placed into an appropriate medical, dental, or other health science school; graduate school; or chemical or chemical-related industry.

Political Science

Welcome to the class of 1986—from the faculty and students of the Political Science Department. We hope to get acquainted with you and that as many of you as possible will take advantage of our program, whether by taking individual political science courses, becoming a political or government service concentrator, or participating in our pre-law program. Political science is both a broad and deep discipline, broad because of the wide impact of government on our lives and deep because an understanding of how we behave politically takes us to the core of our being as humans. Thus, the study of political science is not only directly linked to preparation for careers in law, government, business, and communications but also gives to the student a variety of understandings and abilities to use throughout life. Our department facilities are located in Teel Hall. Stop by to see Tom Brogan, Phil Eyrich, Kathy Manzella, and Charlie Raith.



Business

The Economics and Business Department welcomes the class of '86 and upperclassmen back to campus. Stop by Alumni Hall, first floor, and say hello. Remember—like McDonald's—"We do it all for you!"

NITELIFE

This weekly feature lists nearby concert events as far in advance as is possible.

J.F.K. STADIUM
9/25 The Who / Santana 12 p.m.

THE SPECTRUM
9/11 Fleetwood Mac / Men at Work 8 p.m.
9/12 Willie Nelson / Delbert McClinton 8 p.m.
9/15-16 Neil Diamond 8 p.m.
9/21 Jethro Tull 8 p.m.

THE RIPLEY MUSIC HALL
9/7 Beatles & Stones Video 9:30 p.m.
9/8 Dazz Band 9:30 p.m.
9/9 Our Daughters Wedding Talk Talk 9:30 p.m.
9/10 Blasters / Kenn Kweder / Roustabouts 9 p.m.
9/14 Who Video 9 p.m.
9/15 Paul Carrack's Noise To Go 9 p.m.
9/16 Richard Thompson 9 p.m.
9/17 Dave Edmunds 8:30 & 11
9/20 Farewell Concert Nan Mancini & Johnny's Dance Band 8:30 p.m.
9/21 Lords of the New Church 9:30 p.m.
9/22 Kid Creole & The Coconuts 9:00 p.m.
9/23-24 Robert Hazard & The Heroes 9:00 p.m.
9/30 Mary McCaslin / Jim Ringer Dave Van Ronk / Doc Watson 8:30 p.m.

TOWER THEATRE
9/17 Jimmy Cliff / Peter Tosh 8 p.m.

Unclassified Ads

LIMIT TWENTY WORDS

This year, the *Albrightian* is going to try to re-establish the unclassified ad. If you have something to say, just submit it to Box 107 by the Monday before publication. Due to overwhelming response in previous years, a limited number will be printed each week on a first come first serve basis. The editors reserve the right to refuse messages in poor taste.

STUDENT CREDIT

Ever wish that while traveling, vacationing, or maybe just for emergencies, you could have a national credit card?

Well, now — YOU CAN — obtain a Master Card or Visa while still in school, no co-signer required.

We have established a division to exclusively handle the credit needs of college students... freshmen, sophomores, juniors, and seniors... so you can enjoy the conveniences of credit NOW, and have your credit established for your professional life after graduation.

On a 3 x 5 card, print your name and complete address. (Enclose \$2.00 for postage and handling.) Send to:

Creative Credit International
Collegiate Credit Division
Suite 303 - Penn Lincoln Bldg.
789 Penn Avenue
Pittsburgh, PA 15221

- ACROSS**
- Movie mogul Marcus
 - Heroic tale
 - Song syllable
 - The state of being undamaged
 - Pal
 - Its capital is Dacca
 - Nobel chemist
 - The art of putting on plays
 - Pearson and Maddox
 - Vegas
 - Drink to excess
 - Hiss
 - Italian painter
 - Screenwriter Anita
 - Devilishly sly
 - Decline
 - Devices for refining flour
 - Teachers organization
 - Shore protectors (2 wds.)
 - Machine part
 - Type of music
 - Doesn't eat
 - The Sunflower State
 - Part of APB, to police
 - All-too common excuse (2 wds.)
 - Short opera solo
 - Grotto
 - Part of the hand
 - Made do
 - Prevents
 - Alte
 - U.S. caricaturist
 - Farm storage place
- DOWN**
- Conservatives' foes for short
 - Go — length (ramble)
 - Famous volcano
 - Moves jerkily
 - Hollywood populace
 - Sheriff Taylor
 - "Golly"
 - as an eel
 - Size of some want-ads (2 wds.)
 - Regretful one
 - Vanderbilt and Lowell
 - Acquit
 - "The Lord of My —"
 - Veal —
 - Extend across
 - Tuvis tribesmen
 - Mr. Guinness
 - Spanish for wolf
 - Retrace (3 wds.)
 - Disproof
 - Ends, as a broadcast (2 wds.)
 - Like Felix Unger
 - Head inventory
 - Hurt or cheated
 - Glided
 - Lead minerals
 - Coquette
 - Take — (pause)
 - Finished a cake
 - Football trick
 - "Rock of —"
 - Anklebones
 - Work with soil
 - Too
 - New Deal organization

College enlists new faculty, resident directors

This fall, four additions have been made to the staff of Albright College. Dr. Eugene S. Lubot, vice president for academic affairs, has announced two appointments to the accounting and computer science faculties. Dr. David Beuerman, formerly visiting assistant professor of mathematics and computer science at Clarkson College of Technology, Potsdam, NY, has been named associate professor of computer science. Appointed assistant professor of accounting is William P. Burke, Bethlehem, most recently chairman of the accounting and business faculty at Allentown College, Center Port. Two new resident directors have also been named.

Dr. David Beuerman

A graduate of Cornell University in electrical and chemical engineering, Dr. Beuerman earned the bachelor and master of arts in mathematics at the University of Buffalo (NY) and the doctor of philosophy degree in probability and statistics at the University of Sheffield, England.

A certified data educator in computer science, he also holds certification in the teaching of mathematics, physics, and chemistry.

Previous to his Clarkson College appointment, Dr. Beuerman served similar posts at Westfield State College, Southern Illinois University and others in England and Canada. In addition he has been research and programmer analyst, and senior programmer for both corporate and educational institutions.

Author and presenter of numerous papers in his field, he has completed post doctoral work on computer languages and mathemat-

tical linguistics. He is active in various professional educational associations.

William P. Burke

Burke is a graduate of Bloomsburg State College, magna cum laude, in accounting and holds the master of science in business administration from Bucknell University. A certified public accountant, he has completed a variety of professional development courses by both Pennsylvania and American Institutes of Certified Public Accountants.

Previous to his appointment at Allentown College, Burke was supervising accountant with Con-cannon, Gallagher and Miller (CPA) Bethlehem, and a staff accountant with Peat, Marwick, Mitchell & Co., Bethlehem.

He is affiliated with regional, state and national associations of certified public accountants. He will continue to reside at 23 E. Wall Street, Bethlehem.

New Resident Directors

The new resident directors are Suzanne M. Sweatlock and Bradley D. Beyer. Ms. Sweatlock,

a primary teacher with the Governor Mifflin School District, will supervise resident life in South Hall sorority house, while Beyer, who is presently employed by the Packer Security Agency, will have similar responsibilities for Smith Hall, a men's residence.

Resident directors are a key factor in Albright's view of residence hall living as an extension of a total educational experience. The "RD's" as they are affectionately called, help to facilitate an environment in the residence halls which is conducive to personal and social growth, and academic achievement, Ms. Brewer related.

They serve as a liaison between the students and the college, provide immediate personal counseling, coordinate residential life programming, and, in many instances, supervise student resident assistants.

The current staff includes 21 resident directors and 33 resident assistants, who provide immediate supervision for Albright's 852 resident students, Ms. Brewer pointed out.

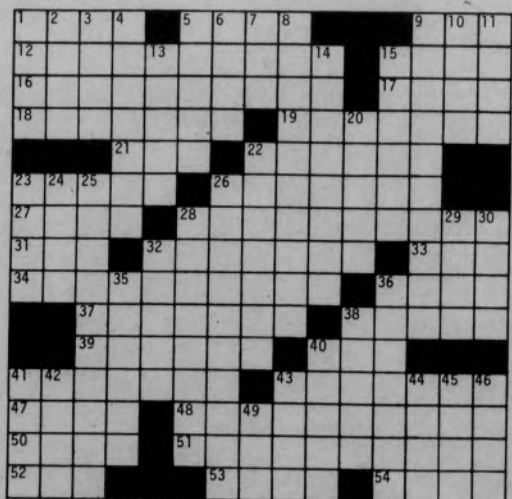


Intramural football will begin soon after classes. Watch your dorm bulletin boards for sign-up information.

First *Albrightian* issue:

Sept. 24

collegiate crossword



© Edward Julius

Collegiate CW77-2

Solution on back page

Homecoming 1982

Plan now to participate in Albright's
1982 Homecoming festivities



Watch your mailbox
for more information

Window painting competition

Songfest competition

Float competition

Dinner-dance Saturday, October 16



Mailroom hours

Monday through Friday
11am to 2:30pm
Saturday
11am to noon

Library hours

Monday through Thursday
8am-Midnight
Friday 8am-10pm
Saturday 9am-10pm
Sunday noon-Midnight

Sub hours

Monday through Friday
7am-9:30pm
Saturday and Sunday
4pm-9:30pm

Rec Center

11am to 11pm

SAT mean verbal score was 524
SAT Verbal Distribution

Score	Number in class	% of class	Cum %
750-800	1	.31	.31
700-749	1	.31	.62
650-699	7	2.20	2.82
600-649	25	7.84	10.66
550-599	77	24.14	34.80
500-549	96	30.09	64.89
450-499	81	25.39	90.28
400-449	31	9.72	100.00
350-399	0	.00	100.00
300-349	0	.00	100.00
250-299	0	.00	100.00
200-249	0	.00	100.00
N/A*	31		

Wanted: Part-time help.
Apply in person. J's Atlantic City Subs, 10th & Perry streets.

Forum

continued from page two

library.
The social calendar weighed heavily on the minds of the student body as they participated in the events of May 8. Some felt the activity schedule too light and unorganized. Dean Lubot remarked that this year's calendar seems much heavier, especially in the first few weeks of school. This was stated by students as a problem time. Dale Vandersall, dean of students announced a meeting of the heads of all campus organizations, scheduled for Sept. 17. At this meeting, each organization will report on its plans for the year and efforts will be made to coordinate these events to avoid troublesome conflicts.

The Open Forum is nearly four months past, but its effects are still being felt. Much has been done already. Several members of the Albright community have suggested frequent forums. Good idea.

*Of these 31 entering freshmen, 4 submitted TOEFL scores and 27 submitted ACT scores in lieu of SATs and thus do not appear in the above verbal distribution table.

Freshmen profile

GEOGRAPHICAL DISTRIBUTION

LOCALE	NUMBER	PERCENTAGE
Pennsylvania	182	52.00
New Jersey	123	35.14
New York	18	5.14
Maryland	7	2.00
Connecticut	7	2.00
Delaware	5	1.43
Other States	3	.86
Foreign	5	1.43
Total	350	100.00

SAT mean mathematics score was 574
SAT Mathematics Distribution

Score	Number in class	% of class	Cum %
750-800	2	.63	.63
700-749	16	5.01	5.64
650-699	25	7.84	13.48
600-649	72	22.57	36.05
550-599	103	32.29	68.34
500-549	60	18.81	87.15
450-499	29	9.09	96.24
400-449	12	3.76	100.00
350-399	0	.00	100.00
300-349	0	.00	100.00
250-299	0	.00	100.00
200-249	0	.00	100.00
N/A*	31		

*Of these 31 entering freshmen, 4 submitted TOEFL scores and 27 submitted ACT scores in lieu of SATs and thus do not appear in the above mathematics distribution table.

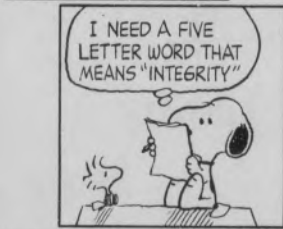
The Par Course





Orientation

continued from page two



solution to this week's puzzle



exciting way to obtain invaluable information!

- 3:00 **GROUP SPORTS**-Kelchner Field
Try your ability at softball, volleyball or frisbee, while showing the other groups who has the athletic talent! Music will be supplied by "Drac!"
- 8:00 **EDMONDS & CURLEY**-CCL
Laugh till you cry with these talented comedians.
- 9:30 **FREE RECREATION CENTER**-CC
Enjoy free pinball, bowling and billiards and/or partake in a relaxing atmosphere meeting friends and talking. Free peanuts and juice too. Pianist, Carl Baggish will be a delight to your ears.

—MONDAY, SEPTEMBER 6—

- 9:00- 9:45 **STRESS WORKSHOP**
Take a deep breath, relax and find out how to overcome various pressures you may encounter such as homesickness, peer pressure, roommate problems, loneliness, let-down after orientation, and stress in general. Location: same as Time Management Workshop on Sunday.

- 10:00-10:30 **STUDENT TO STUDENT ADVISING**
Talk to upperclassmen in your major and find out about the courses and opportunities offered to you in your field of study at Albright. Location: same as Stress Workshop.

- 10:45-11:45 **GROUP BANNER**
Time to pull your creative abilities together and create a "Class of '86" Shield. Get psyched and convey your enthusiasm for Almost Anything Goes.

- 1:00- 5:00 **ALMOST ANYTHING GOES**-Kelchner Field
Here's your chance to show your stuff; prove that your orientation group is the best! Just like the T.V. Show, you'll be participating in a little friendly competition and most unusual physical activity. Prizes will be awarded to the teams displaying the most "talents." Don't forget your meal ticket.

—TUESDAY, SEPTEMBER 7—

- 9:00- 9:45 **HOW TO SURVIVE . . .**
Organization is the key to taking tests, writing notes and observing lectures at college. Learn how to keep up with your work, spot key words in a lecture, study for exams, and where to seek tutors and professional help. Location: same as Time Management and Stress Workshops.

- 10:00-10:30 **DEPARTMENT MEETINGS**
Students who have declared an area of concentration or have interest in a particular area will meet with the departments at announced locations. See listing in Campus Center.

- 10:30 **ADVISING SESSION**
Meet your faculty advisor and discuss your Fall Semester class schedule.

Coming September 9
The Mr. Fingers Show
Irv Weiner Programs

It's Magic

Sponsored by SGA



Trinity Lutheran Church

Sixth and Washington Sts. Reading, Pennsylvania

Presents

A Fall Festival of Music

Bach Motet: "Praise the Lord, All ye Nations"

Brahms: Requiem

Sunday, September 12, 1982

4:00 P.M. Trinity Sanctuary and

8:00 P.M. Albright College Chapel





ATLANTIC CITY Giant Submarines

10th and Perry Streets
372-2745

*The largest selection of hot and cold sandwiches in Reading
Visit J's gameroom while you wait*

Back to school from J's
SPECIAL

regular steak **\$1.19**
or
cheese steak Limit 2 per customer
With Albright ID

Offer good 9/4 thru 9/11

*J's now offers dorm delivery
Call manager for details*

50¢ OFF any large submarine
every time you come in
with Albright ID

Not good with any other offer