

## Alumni Holds Campus 'Open House'



The Albright Lions guard the entrance to Albright Stadium, the scene of the championship game in which the Lions of 1959 gridiron fame romped to the Northern Division title of the Middle Atlantic States Conference. The stadium offers facilities for football, track, and outdoor basketball. The normal seating capacity is 3,000. However, by the use of temporary bleachers, the total seating capacity can be raised to 8,000.

## Albright Terminates 104th Year At End Of 1959-1960 Term

The 104th year of Albright College is now drawing to a close. On this "Open House" day for Mr. and Mrs. Berks County it would be interesting to review the history of this institution and to learn some of the important phases through which it has gone. Albright College is located at the base of Mt. Penn in the city of Reading, Pennsylvania. The campus, consisting of 55 acres, lies at the edge of one of the residential sections of the city.

In 1856 Union Seminary was founded by the Central Pennsylvania Conference of the Evangelical Association at New Berlin, Pennsylvania, and was chartered the same year. In 1887 it became a college; its name was duly changed to Central Pennsylvania College and its charter amended accordingly.

In 1881 Schuylkill Seminary was formed by the East Pennsylvania Conference of the Evangelical Association in the City of Reading, Berks County, Pennsylvania, for the thorough moral and literary education of persons of both sexes. In 1882 the Seminary was granted a charter and four years later moved to Fredericksburg, Pennsylvania, where Col. John H. Lick, of Lebanon, presented to the institution a plot of ground for a campus and the cost of the erection of an adequate building. In 1902 it moved back to Reading, and in 1923 became a college. By decree of the court of Berks County its name was changed to Schuylkill College of the East Pennsylvania Conference of the Evangelical Church. The purpose was to maintain a college in the City of Reading with power to confer degrees in the liberal arts, pure and applied science, philosophy, and literature. It was governed by a Board of Trustees elected from ministerial and lay members of the Evangelical Church.

### Jacob Albright

Albright Collegiate Institute, named after the founder of the Evangelical Church, Jacob Albright, was established at Myerstown, Pennsylvania, and was chartered by the East Pennsylvania Conference of the United Evangelical Church in 1895. By amendment of the charter in 1898, Albright Collegiate Institute became Albright College of the

(Continued on Page Three)

## Friends of Albright College

*It is with pleasure that we welcome all of you to our campus and especially those of you visiting for the first time.*

*As you tour the campus you cannot help but be impressed by the many additions that have been made in the last few years. Credit must be given to our community, the administration, the faculty and alumni for all they have done to aid in the growth of Albright College.*

*Berks County is indeed fortunate to have a College such as Albright in its community and Albright in turn is grateful for the interest and enthusiasm displayed by the community.*

*With continued community spirit and positive attitude of our administration, faculty and alumni -- Albright College will grow and keep pace with the demands of the future.*

George E. Koehler

## 'Mr. And Mrs. Berks County' Are Invited To See Albright

"Mr. and Mrs. Berks County" have been invited to the Albright College campus today to note the progress of this educational institution in the aspects of physical facilities and academic standards. The Berks County Alumni Association of Albright College is sponsoring this "Open House", the first of its kind on this campus, and is proud to be able to show the public of Berks County the fine facilities which are available for collegiate study within the city of Reading.

## Degrees Conferred By Albright College

The bachelor of arts degree is conferred on all graduates who complete the liberal arts curriculum except those who major in biology, chemistry, physics, or mathematics. These science and mathematics majors will receive the bachelor of science degree. Likewise, those who have completed the home economics curriculum will receive the bachelor of science degree and those graduates in economics will receive the degree of bachelor of science in economics.

Those students completing the five-year Albright-Reading Hospital nursing curriculum, the five-year forestry program, or the cooperative engineering curriculum will receive the bachelor of science degree.

The affair will be held between 2:00 and 5:00 p.m. today. Much work has been put into the arrangement of this first "Open House" at Albright College. The idea is to have the public of Berks County become more aware of the fine academic institution which has been made available for men and women.

Plans for this "Open House" were arranged for the most part at several committee meetings in the dining hall, April 19, and May 3. Those individuals, among others, who did the planning for this event are the Dean of Men at Albright, John W. Kopp, the college church relations head, Rev. Robert Smethers, the college public relations director, Dr. Samuel B. Shirk, the college director of development, Leroy M. Burkholder, executive alumni secretary, Mary Fry Good, and alumni William Shirk, George Koehler, Gaylord Grozier, Frank York, and Freda Zettlemoyer.



An interior view of the new Merner-Pfaffner-Klein Memorial Chapel-Auditorium is shown as taken from the balcony during the dedication services last February. The speaker is Bishop Kaebnick of the eastern area of the Evangelical United Brethren Church.

# Albright Campus Displays Its Beauty



This 650-capacity dining hall and large reception hall was opened for student use in January, 1959. The dining hall can accommodate 450 persons in the center section and 200 in the two adjoining wings. The reception hall is furnished with comfortable sectional sofas, tables, and drapes.



Dedicated in February, 1960, the Merner-Pfeiffer-Klein Memorial Chapel-Auditorium accommodates 925 for religious and cultural programs. Two faculty offices and four classrooms are on the ground floor.

## Alumni Association

The officers of the Alumni Association which is sponsoring the Berks County "Open House" on the Albright campus are as follows: president, Dr. Gerald G. Hottenstein, '38; vice-president, Norman E. Dettra, Jr., Esq., '52; secretary, Eileen S. O'Neil, '47; treasurer, Theodore C. Templeton, '49 and the executive secretary, Mary Fry Good, '49.

The college trustees of the Alumni Association are Carl F. Mogel, Esq., '41; Dr. Leonard M. Miller, '20; and John C. Lanz, '37.

## Women's Auxiliary

Albright College has a Women's Auxiliary. It is an organization of women of Reading and vicinity meeting monthly for the purpose of advancing the interests of the college. The president of the group is Mrs. Fred Luckenbill; the first vice-president is Miss May H. Frundt; the second vice-president is Mrs. George Fisher; and the third vice-president is Mrs. John Davis.

The organization's secretary is presently Mrs. Arthur Kissinger, while the treasurer is Mrs. Thomas Kane, the financial secretary is Mrs. Charles Friedericks, and the assistant financial secretary is, Mrs. Walter Ache.



The Merner-Pfeiffer Hall of Science, as viewed from Teel Hall, across the Science Field portion of campus, houses the biology, chemistry and physics laboratories and classrooms. A lobby on the main floor contains a museum collection of birds and mammals and a mineral collection.

## Campus Publications Of Albright Noted

Three student publications dominate the literary scene on the Albright Campus—*The Albrightian*, college newspaper; *The Cue*, school annual, and *The Agon*, a creative writing buff.

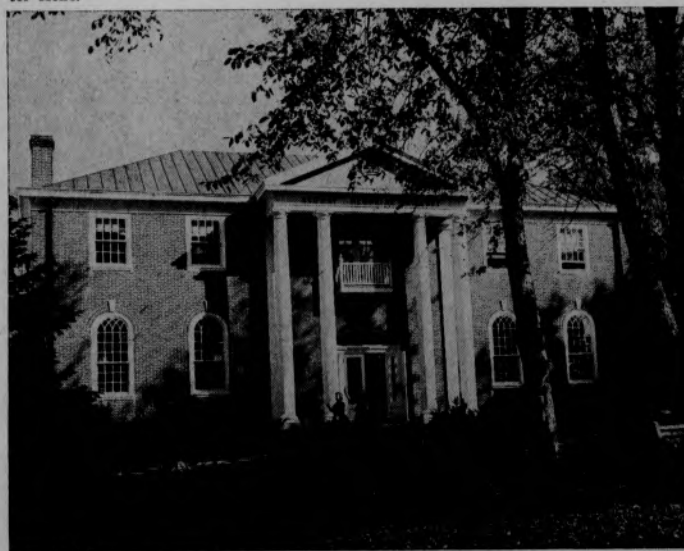
*The Albrightian*, under the editorship of Craig Leffler, '61, is the voice of the student body. Appearing on the average of nine times each semester, it is rated among the better college newspapers in the area.

### Cue

Edward Traves, '60, is editor of the 1960 edition of *The Cue*, college yearbook. Something new has been added this year in that a 45 rpm record will be enclosed on the inside cover of every yearbook. The record contains highlights of the school year.

### Agon

*The Agon* serves as the primary outlet for creative writers to express themselves. Edited by Minot Tillson, this year's issue appeared in white and red paper cover.



The Alumni Memorial Library provides stacks for a total of 80,000 volumes. It presently contains more than 58,000 books, nearly 6,000 pamphlets, 330 current magazines, more than 1,000 records, catalogs, and hundreds of films, film strips, and slides. Study cubicles are provided in the intermediate stock area.



Selwyn Hall, the oldest building on campus, is essentially the freshman women's residence hall. The health center is also located in this building. The grounds immediately in front of the building is usually populated by bushy-tailed, peanut-craving little darlings known as squirrels.

# Important Events Highlight Calendar



Albright College's May Queen of 1960, Patricia Cush, '60, is crowned during last weekend's May Day festivities by the custodian of the crown, Margaret Schultz, '60. Miss Cush hails from Bradley Beach, New Jersey, and Miss Schultz comes from Trenton in the Garden State.

## May Queen Takes Throne On 'Weekend'

Highlighting Parent's Weekend festivities on the campus at Albright was the traditional May Day program. Under the general supervision of Margaret Schultz, '60, custodian of the crown, and Nancy Ratajczak, '60, mistress of ceremonies, attendees under threatening skies expressed their approval throughout the program.

Several hundred onlookers witnessed the crowning of Pat Cush, '60, of Bradley Beach, N. J., as Queen of the May.

Responsible for the general planning of the entire weekend, which included a dinner in the college dining hall, chapel concert and subsequent services the following morning, were Sue Mock, '61, and Michael Teitleman, '60.

## President Masters Talks To Students In Assembly

Albright College's president, Dr. Harry V. Masters, addressed the student body in assembly, Thursday, May 5. This was the 1960 version of his annual report to the students in review of the college year and with regard to future plans. The president first explained the function of the Board of Trustees. He said that this board determines the policy of the institution, employs the administrative and faculty staffs, and secures and manages the college funds. At present there are 40 members on the board: 19 trustees from church groups, 18 trustees "at large", and 3 trustees from the alumni.

### History

(Continued from Page One)

East Pennsylvania Conference of the United Evangelical Church for the purpose of maintaining an institution of learning at Myerstown, Lebanon County, Pennsylvania, or such other place within the Commonwealth of Pennsylvania as the East Pennsylvania Conference of the United Evangelical Church might select.

In 1902 Albright College and Central Pennsylvania College were duly merged under the name of Albright College and the charter of Albright was amended in harmony with this action. The new institution was governed by a Board of Trustees elected by the East Pennsylvania, Central Pennsylvania, and Pittsburgh Conferences of the United Evangelical Church and the Alumni Association of the college.

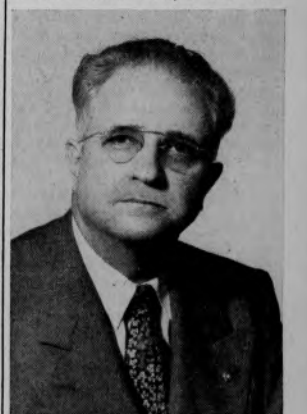
### Merger

At a meeting of the Board of Trustees of the aforesaid Schuylkill College held at Harrisburg, Pennsylvania, February 15, 1928, and at a meeting of the Board of Trustees of the aforesaid Albright College held at Harrisburg on the same day a resolution was duly adopted that these colleges should be merged, or consolidated, under the name of Albright College of the Evangelical Church to be located at Reading, Pennsylvania.

November 16, 1946, at Johnstown, Pennsylvania, the Evangelical Church and The Church of the United Brethren in Christ were merged into the Evangelical United Brethren Church. The new denomination represents a membership of 800,000.

During the academic year 1955-1956 Albright College celebrated its centennial and five special convocations. To insure financial security and Albright's growth and strength in the field of higher education, the Trustees in 1958 approved carefully laid plans for a long-range development program.

President Masters mentioned that two building projects loom for the near future. There will be an addition made to the science building or a separate science building may be constructed. Also, a new women's dormitory is scheduled to be built.



President Masters

en's dormitory is scheduled to be built.

Next year's curriculum will offer some changes. Latin will be reintroduced, a new general education course will be offered; there will be two new courses in physics and two in geology, a class for students in seminar on great books, a revision of offerings in the math department, an alternative procedure in student teaching, and a new program to aid students for teaching in the natural sciences. The separate degree of bachelor of science in home economics will be eliminated (will be classified under bachelor of science) along with the social science major.

Albright will participate in the Washington Semester Plan, the Advanced Placement Program, the Honors Program, while B students will be allowed to go into the foreign study program and there will be the possibility of the aforementioned "Book of the Semester" plan.

## Homecoming Day Became A Success

Homecoming—a time when old grads come back and visit for awhile and relive old times.

Despite the fact that Albright wound up on the short end of a 19-6 count at the hands of Scranton University, the "old grads" as well as the "aspiring grads" were treated to some entertaining half time pageantry complete with beauty queens and multi-colored floats.

### Pi Taus Win

Carol Ann Morris, '62, was crowned Homecoming Queen and reigned the entire weekend. The Pi Tau Beta Fraternity had a field day in coping first prizes in the float parade and songfest. The Pi Tau's sang their way to the top via "Aura Lee" and "Viva La Campagne." Their float depicted cartoon character "Bettie Bailey" shining "Sergeant Snorkel's" boot.



This year's Homecoming Queen, Carol Morris, '61, and her court display their feminine charms within the confines of the Physical Education Building on Homecoming Day, October 24. The women are: seated from left to right; Carolyn Sharpless, '62; the queen; and Carol Wilson, '61. Standing from left to right are Barbara Davis, '62; Judith E. Miller, '61; April Pogosaev, '62; and Barbara Schaefer, '61.

## Frat Setup Explained

One of the main sources of activity on the Albright College campus are the social fraternities and sororities. Each of these organizations participates in intramural activities as well as in competition along the lines of academic achievement, float parade and songfest.

### "Local" Groups

The status of all of these social organizations is "local" in sharp contrast with the "national" fraternities on other campuses.

Both the Phi Beta Mu and Pi Alpha Tau Sororities are housed in South Hall. The fraternities and their addresses are: Alpha Pi Omega, 1616 Olive St., Kappa Upsilon Phi, 1601 Hampden Blvd., Pi Tau Beta, 1605 Hampden Blvd., and Zeta Omega Epsilon, 1607 Al-sace Road.

## Aims And Objectives Of College Must Be Upheld

### Admission Procedure, Requirements Stated

Students interested in enrolling at Albright College should fully understand and aspire to a liberal arts education, with its broad cultural background and educational equipment for making a worthwhile contribution to society.

The suggested procedure for admission is to write to the Public Relations Office for preliminary information about Albright—catalog, viewbook and career pamphlets. If interested to the point of application then visit the campus, preferably by appointment.

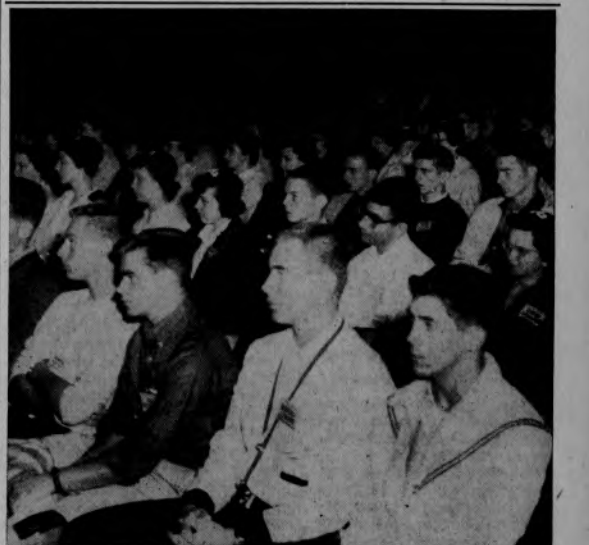
Albright College recognizes its responsibility to provide for the vocational needs and interests of its students.

The aims of Albright College were first stated by the General Conference of the Evangelical Church in 1843 and were given institutional form as early as 1852 and 1856. Its charter pledges the college to provide for the "moral, literary, and scientific education of persons of both sexes." Its privileges are open, therefore, to all whom they may benefit, and its honors are conferred without distinction of race or creed.

Albright College is a Christian college founded and maintained by the Evangelical United Church, and as such aims to remain true to the fundamental moral and religious principles of the denomination. The Evangelical United Brethren Church is democratic in policy, emphasizing individual worth and high moral responsibility. It seeks in Albright College to make possible the highest intellectual development in an atmosphere of Christian ideals, so that the student will be encouraged to formulate and practice a Christian philosophy of life. The Trustees of the College are charged with the selection and maintenance of a faculty on the basis of Christian character as well as professional preparation.

The college, as one unit in the student's lifelong process of education, aims to inspire and guide him

(Continued on Page Four)



The class of '63 is assembled in the Physical Education Building during Freshmen Orientation Week prior to the official opening of this school year. During this period each year the freshmen are given a battery of tests under the direction of the Psychological Service Center.

## Enrollment Statistics 1959-1960

	Men	Women	Total		
Freshman	199	105	304	Enrollment by States:	
Sophomore	139	74	213	Pennsylvania	630
Junior	127	53	180	New Jersey	133
Senior	97	43	140	New York	46
				Others	28
	562	275	837	Official Full-Time	837
Part-time Students				Reading Hospital Nurses	43
Reading Hospital Nurses				Summer Session 1959	124
Summer Session 1959					165

## Observer Sees Sports Cycle Operating Here

[Ed. Note: The following article is reprinted from a column written by the *Albrightian* sports editor and published in the issue of February 12, 1960.]

It has been said of some people that they "go around in circles." It seems that the history of sports at a given school can be said to go around in cycles.

The overwhelming evidence of this phenomenon has appeared within the last decade at a number of so-called big-time schools, and now in these latter days has presented itself here at Albright College. Most Albrightians will bear witness to this strange fact which has bewildered coaches, embarrassed athletes, stunned the alumni, overjoyed arch rivals, and disappointed the student body.

This undulating cycle, resembling the wall of air raid sirens as drawn on the many civil defense public information presentations, can be seen operating over many athletic endeavors in the past. A glaring example which comes immediately to mind is the case of the football picture at Oklahoma. A few years ago the Sooners rolled over opposition as though they were enjoying a practice scrimmage with their third string gridgers; they were almost inevitable occupants of first place position in the national ratings each Monday morning. This past pigskin season surprisingly little was heard of Bud Wilkinson's men.

### Other Examples

Other examples can be found in Army and Notre Dame, Army now riding on the upswing after the cribbing scandal in the early 1950's. On the opposite end of the cycle, and much closer to home, is Temple University's football fortunes. That Philadelphia school is mired in the most unfortunate winless swamp it has ever passed through.

And so it goes—up and then down and up again. Indeed there is a cycle, although the length from crest to trough varies. This past fall coach John Potsklan's football team won seven games. The last time an Albright team won seven was in 1937, an undefeated year.

So far I have dwelt on football, but the cage sport is not to be ignored. This year's basketball record of 18-8 is second in the history of the sport at Albright only to the 19-1 log of the 1944-45 team coached by Neil O. Harris. It was ten years ago that a Red and White basketball team lost less than ten games.

What then, are we to sit back and enjoy what is rightfully ours, according to this strange phenomenon? By no means! for this rise in athletic prominence of which we have been partaking has not come without the hard work of many people which has put together the exceptional athletic squads which have now appeared at this school. The upward swing of the cycle is not, therefore, a fortuity; on the contrary, it is a state of affairs to be achieved.

So let it be said that I have great admiration for those men who have labored to put Albright athletics on the upswing.

### Aims

(Continued from Page Three)

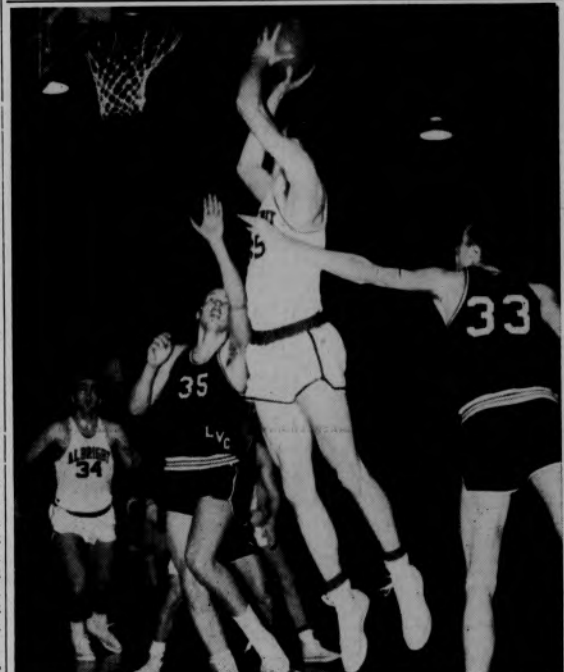
In developing his whole personality through intimate contact with, and appreciation of, the cultural heritage of the human race. At the same time it seeks to prepare him for further study in a professional or a graduate school or for direct entry into some occupation. Albright College aims to serve well its own community, and seeks to prepare its young people for intelligent, effective leadership and service in democratic America.

## Tennis Team On Top As Spring Card Ends

The tennis squad, leading the Albright spring sports teams with a 9-2 record, will close out their highly successful 1960 season this week with three games scheduled. The track team ends its dual meet competition next Saturday, but will compete in IC4A championships next week.

Tennis		Track and Field	
ALBRIGHT, 6;	St. Joseph's, 0	ALBRIGHT, 65;	Muhlenberg, 61
ALBRIGHT, 6;	West Chester, 3	Haverford, 77;	ALBRIGHT, 55
ALBRIGHT, 6;	F. and M., 3	Washington College,	30
Bucknell, 6;	ALBRIGHT, 3	ALBRIGHT, 83	Ursinus, 43
ALBRIGHT, 9;	Lycoming, 0	Swarthmore, 74;	ALBRIGHT, 52
ALBRIGHT, 8;	Muhlenberg, 1	Johns Hopkins, 55	5/6;
ALBRIGHT, 9;	Susquehanna, 0	ALBRIGHT, 55	1/3;
ALBRIGHT, 8;	Juniata, 1	Gettysburg, 50	5/6
ALBRIGHT, 9;	Elizabethtown, 0	F & M., 73;	Bucknell, 52;
Lafayette, 6;	ALBRIGHT, 1	ALBRIGHT, 29	
ALBRIGHT, 9;	Moravian, 0	ALBRIGHT, 69	1/2;
		Lebanon Valley, 52	1/2;
		Susquehanna, 32	

Baseball			
Ursinus, 13;	ALBRIGHT, 8;	Susquehanna, 7	
ALBRIGHT, 7;	Gettysburg, 6	Juniata, 7;	ALBRIGHT, 6
ALBRIGHT, 10;	PMC, 0	LaSalle, 13;	ALBRIGHT, 5
Scranton, 10;	ALBRIGHT, 6	ALBRIGHT, 9;	Muhlenberg, 7
ALBRIGHT, 20;	F. and M., 7	ALBRIGHT, 18;	Lebanon Valley, 4



Ken VanDine, Albright center and winner of the Ron Regar most valuable player award, attempts a jump shot in one of the Lions' home contests this season. Stan Kaminski (34) anticipates a possible rebound. The Renkenmen posted a record of 18 wins and 8 losses in a banner season.

## Cage Team Has 18-8 Log As VanDine Wins Trophy

By BARBARA MILLAR

Coach Will Renken's 1959-1960 court squadron matched the season's ends as they existed in the same manner in which they had made their entrance — gloriously victorious. The 84-68 mauling of Gettysburg on December 2 set the precedent for a promising pattern which found completion in the 91-68 trouncing of Wilkes on March 5. The result was a banner boasting eighteen wins out of twenty-six attempts, a showing second only to the 1944-45 squad's 19-1 exhibit.

Following the season's finale against Wilkes in the Albright Field House, six-foot-five Ken VanDine received the Ron Regar Trophy after being selected the most valuable player on the Lion squad this season. VanDine offered his services as the foremost rebounder and also as a heavy scoring asset.

In the Hall of Fame Tournament at Springfield, Mass., the Renken quintet captured one of the four trophies awarded to participating teams, as they finished with a record of two wins and one loss. They defeated Amherst and Middlebury

but were downed in the opening round by Springfield College, who edged them out, 14-73, as the result of a four-point play in the last two minutes of an extra period.

Albright's top scoring this season came during their 106-65 walk over Swarthmore. This was the Lions' highest single-game total since '55 when they tallied 112 against Scranton.

Tom Pearsall, the highest scoring freshman ever to play at Albright, wound up the season with 560 points for a 21.6 average. His thirty-one point tally against Hofstra gave evidence of his steady eye while his agile court maneuvering displayed equal proficiency on the defense.

Sam Preston was a constant spark for the Lions with his surging spirit which was manifest in his enumerable steals and fast breaks. Charley Smith and Stan Kaminski filled out the usual starting line-up and well deserved the task. Bob Holzinger and Ted Evans were valuable as reserves. Seniors Smith and Dick Greene saw their final court action for the Red and White.



Albrightian Tom Kelly takes a lead off first base in a baseball game held earlier this year at Kelchner Field. As of May 7 the Albright tossers posted a 6-4 record. The pitching records include Joe Wertz, three wins, two defeats; Tom Katanick, two wins, one defeat; and Ray Somerstad, one win, one defeat.

## Gridgers Earn Crown With Impressive Play

For the first game the Lions made their way to Greenville, North Carolina, only to encounter the strong Pirate squad of East Carolina and end up on the very short end of a 45-0 score.

In the first home battle the Lions devoured the Dragons of Drexel, 23-12. Mike Varano started the scoring for the Lions in an auspicious manner by tearing down the right sideline for a 72-yard punt return without a Dragon claw touching him, due to several fine blocks.

Tom Olivo hauled in a 37-yard pass for Albright's second TD after Claude Lynch had booted a field goal, the first Lion three-pointer in ages. Tony LoSapio pounced on fullback Bob Nagle's fumble in the Drexel end zone to complete Albright's scoring.

Next, the Potsklanmen traveled to Lebanon to ground the Flying Dutchmen of Lebanon Valley, 18-0. It was the worst defeat suffered by LV all year as the hosts were unable to penetrate beyond Albright's 30-yard line. Varano, Olivo, and Lynch each scored a six-pointer as Albright notched a total of 318 yards.

Fullback Gerry Bricker earned two TDs and Olivo gained one, while Lynch added a single conversion point, to account for the Lions' point production against the Lycoming Warriors in a 19-0 debacle. Varano gained 116 yards in 20 carries in this second home encounter.

Although the Lions did better according to the statistics at Gettysburg, the Bullets fought to a 12-6 victory and ended a three-game winning streak for Albright. In Albright's homecoming fracas the Scranton Royals took advantage of several Lion miscues to rally for a 19-6 win.

Against Moravia, the Lions unleashed a tremendous offense in scoring all 33 points in the first half to win easily, 33-12. Olivo and Bricker each scored two TDs and Chapman ran seven yards for another. The magnificent Albright line held the Greyhounds to six yards rushing. The Lions were way ahead in yardage gained against Muhlenberg, but were forced to score in the last minute on a Chapman to Gary Sheeler pass in order to take home the victory, 27-22.

All Lion fans clearly remember what happened on November 14 as an inspired Albright team simply overwhelmed the Juniata Indians in a 14-0 history-making game.



Albright College's Tony LoSapio (30) and Gary Chapman (6) close in on F&M's John Betrone in the Lions' football finale with the Diplomats last November. Albright won, 48-14, to finish the grid season with a 7-3 mark and the championship of Middle Atlantic States Conference.