

# THE ALBRIGHTIAN

November 25, 2003

The Voice of Albright College

Volume 95, Issue 5

## Football Trounces Leb Val in Season Ender

News Staff  
The Albrightian

Reading, PA - Records fell at Shirk Stadium on Saturday as Albright defeated Lebanon Valley 37-21 in the final game of the regular season. The Lions will now wait to hear if, at 7-3, they will receive an invitation to an ECAC postseason bowl game. Junior quarterback John Port threw for 306 yards in the game, giving him 3397 yards for the season, setting new school and conference records for passing yards in a single season. Port also eclipsed the school and conference records for total offense in a single season with 3358 yards of total offense.

Albright wasted no time scoring in their final home game at Shirk Stadium this season. The Lions drove 68 yards in only 2 plays and :39 on their opening possession for an early

touchdown. John Port connected with senior Jesse Dorais for a 47-yard touchdown strike to give Albright the early 7-0 edge. Albright struck again midway through the first quarter. Junior Nick Cushman's 35-yard punt return gave Albright the ball on the Dutchmen 23-yard line. Three plays later Port found Dorais again, this time from five yards out, to increase Albright's lead to 14-0.

After the teams exchanged missed field goal attempts and one turnover apiece, the Lions found the end zone with only 2:58 remaining in the half. Port connected with Dorais for a 50-yard pass completion, setting up a Port to freshman tight end Michael Boles 15-yard touchdown pass, the first of Boles' college career. The extra point attempt was blocked resulting in a 20-0 Albright advantage.

On the ensuing kickoff, Justin Smith

recovered a Lebanon Valley fumble deep in Dutchmen territory. Port only needed asnap to connect with Dorais for his third touchdown of the day, increasing the Lion lead to 27-0.

Lebanon Valley would answer before the end of the half, driving 72 yards in 2:04. Dan Kelly connected with Scott Marek for a 2-yard touchdown pass to finish the drive, closing the gap to 27-7 at halftime.

Senior Jack Byers intercepted his second pass of the day early in the third quarter, setting up a Dustin Kaplan 24-yard field goal that gave Albright a 30-7 lead two minutes into the second half.

As was the case in the first half, the Albright defense allowed Lebanon Valley very little room to operate in the third quarter. The Lions allowed only 54 yards of offense in the third quarter, and forced

(continued on pg. 3)

## Godsmack to Rock Sovereign Center

News Staff  
The Albrightian

Multi-Platinum-selling rockers, Godsmack, come to town on their mega-successful "Faceless" tour. They hit the Sovereign Center on Saturday, November 29th. Tickets for this show are \$32.

The Boston-based 4-piece saw FACELESS debut at #1 on the Billboard charts in April and plan to bring the year to a close with an unparalleled stage show featuring the album's big hits along with crowd favorites like "Voodoo" and "Awake".

This US heavy rock band revolves around the diminutive figure of Sully Erna, a self-confessed witch from Boston, Massachusetts, USA. Erna had played drums with local Boston band Strip Mind, before taking a yearlong break from music. He formed Godsmack (named after an Alice In Chains song) in 1995 with Robbie Merrill (bass),

came to the attention of ex-Extreme drummer Paul Geary who signed them to his management company PGE. The album's stand-out track, "Whatever", became a big local hit, and, with their fortunes rising, original drummer Stewart rejoined the band in mid-1997.

The new line-up signed a deal with Republic Records in July 1998. The heavily remixed album (also released under the title All Wound Up) became a surprise hit, selling over a million copies in America, helped immeasurably by the band's appearance at the US Ozzfest and their subsequent support slot on Black Sabbath's reunion tour. Reaction to the album was mixed, with some critics accusing the band of straying too close to the sound of Alice In Chains and Metallica to be considered truly original. A wry sense of timing saw the band's sophomore collection arrived

## The UBU Project: Decadence

Stacy Stacherski  
The Albrightian

Why have the spirals invaded Albright College? They are here to herald the coming of the Domino Payers current production "The Ubu Project: Decadence". The show, directed by Jeffery Lentz, has run in the Wachovia Theatre this past week and weekend.

The UBU Project: Decadence, based on Alfred Jarry's UBU Trilogy (Ubu Roi, Ubu Cuckholded, and Ubu Enchained) is a twisted tale of a power hungry son that goes so far as to kill his father, and frame his brother for the murder to clear his way to the throne. Ultimately the banished son finds his way through the trilogy to enslavement, where his treacherous brother is left to keep the secret that the now enslaved son is the true heir to the crown, which he wears.

Jeff Lentz's

interpretation of the Ubu Trilogy took some of the basic tenants of the story and threw the rest out of the proverbial window. The Lentzian version is a silent play that conveys the story through the motion of the actors and the remixed music of Shostikovich. Ultimately the play is a silent opera combining William Shakespeare's Hamlet, Macbeth, Richard III, Henry V, and Dante Alighieri's Francesca da Rimini. The few concepts that carry from the original Ubu Trilogy to the version playing in the Wachovia Theatre are the beginning of the story and the spiral.

The spiral itself originated on the stomach of the character, Pere Ubu, a power hungry tyrant. The spiral becomes a flower in Jeff Lentz's interpretation of the Ubu trilogy. The flower represents a "quest for love" and is a catalyst for the events of the show.

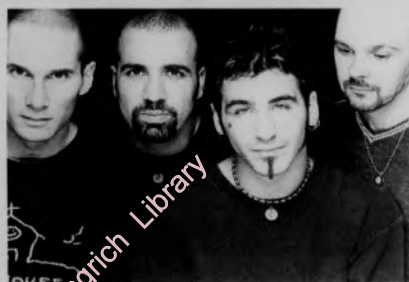
What is the spiral? Jeff Roberts, who plays Prince Pierre explains that the spiral is not only a "starting point for the play," but that it is also a "two way spiral - going towards the center produces disorder, while towards the outside creates a feeling of normalcy."

Being a silent play, the music is necessary to convey the words of the actors.

Although nonverbal communication was different for Jeff Roberts, it was not a problem, "as long as [he was] in the moment and believing it." Seiji Yamashita, as Czar Puck, thought that The UBU Project: Decadence was "a great project to work on" despite all the difficulties of a "silent opera."

While the play does contain murders, there is a bit of romance woven into the story. All in all, UBU is a different and exciting new direction at Albright College

Stacy Stacherski is a reporter for The Albrightian



For more information on Godsmack tickets and other upcoming shows, check out [www.sovereigncenter.com](http://www.sovereigncenter.com)

Tommy Stewart (drums) and Lee Richards (guitar). The latter pair only lasted a few months, and were replaced by Tony Rombolo (guitar) and Joe Baro (drums). The new line-up, with Erna playing drums, recorded a self-titled album in 1996 on a budget of \$2500 and sold it through local retail chain Newbury Comics. Local radio station WAAF picked up the track "Keep Away" for heavy rotation, and the band also

on Halloween 2000. In hardly deviating from the sound of the debut, Awake did not exactly endear the band to their critics, although it was snapped up by their substantial fanbase. Faceless was even more successful, debuting at number 1 on the US mainstream album chart in April 2003.

The Albrightian  
Page 3

Page 2

Rocky Recap

The Fungus Amongus



## Internet Connection Picks up the Pace

Sheila Berninger  
The Albrightian

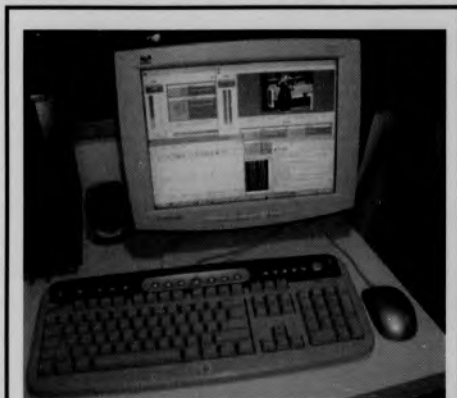
Remember how slow the Internet was last year? If you were here at Albright last year, how could you forget? At times, one could not sign on AOL Instant Messenger, or even access popular online e-mail accounts such as Yahoo.com and Hotmail.com. The sluggish speed of the internet connection made most of us want to throw our computer out the window, or complain over and over again to Information Technology Services. These complaints were heard, and over the summer the five separate T1 connections- which provided internet to the entire campus- were replaced by a single pipe internet connection called SONET.

The total bandwidth of the five T1 connections was approximately 7.5 Megabits. The SONET connection has a bandwidth of 15 Megabits, double the bandwidth from last year. For those of you who do not know this computer jargon (myself included), a rough definition of bandwidth is: the amount of data, measured in bits, that is transferred per second.

Network Administrator Jason Hoerr said that access to online educational resources such as the Blackboard site and Library Resources are important, therefore, 30 percent of the SONET 15 Megabits bandwidth is guaranteed to web-based traffic to educational resources. This leaves 70 percent left over for students using the Internet for entertainment purposes.

"We portion out a chunk [of the remaining percent] to each student," Hoerr said. This basically means that the remaining 70 percent of the bandwidth is shared by students using the Internet on campus for purposes other than Blackboard or Library Resources. One downfall of this bandwidth sharing could be slower download time for certain Internet programs.

Ashley Seilhammer, Junior, said that she noticed an increased slowness of the



SONET provides twice as much bandwidth as the aged T-1 connections

Internet about two weeks ago.

"Even IM [AOL Instant Messenger] is slow now," Seilhammer said. She added that it takes between 15 and 20 minutes just to download a song from the Ares file-sharing program.

Alicia DiValerio, freshman, said she also noticed the slower downloading rates on Ares. She just purchased a brand new computer last week, and the Internet is still slow on her computer.

Although AOL is a vital communication line for students, and being able to download songs is a great convenience, e-mail-where many students receive important messages from family and friends from home-is an Internet program that we cannot live without.

"I noticed a change in my e-mail capacity," Junior Brian Trostle said. Trostle has noticed the increased slowness of the Internet -especially during the middle of the day- and this affects his ability to check his e-mail.

If the new Internet connection was put into place this summer, then why are students noticing changes now? Hoerr said the slowness could be blamed on something called the Packet Shaper, which basically guarantees certain bandwidth. The bandwidth in this case would be the 15

Megabits of the SONET connection. Hoerr said that the Packet Shaper contains files of common Internet applications. When students use other Internet applications, however, such as Ares or AOL Instant Messenger, the Packet Shaper tries to create files in order to classify these applications. Then, the Packet Shaper gets filled up with files and this affects its ability to guarantee a certain bandwidth. The overfull Packet Shaper was most likely the cause for recent Internet slowness on students' computers.

The Packet Shaper was cleared out, and updated to remove unnecessary files, on Monday or Tuesday of last week, according to Hoerr. This should bring the Internet connection back up to speed for students. If problems persist, however, Hoerr said he hopes that students will contact him.

"I would love to get feedback from students on a more regular basis," Hoerr said.

Students can contact IT Services at extension 7229 or e-mail the Help Desk at

Sheila Berninger is a junior reporter for the Albrightian

## The Smell of the Mushroom Farm

(formerly "From the Editor's Desk")

Dan Ruedy  
Editor-in-Chief

Welcome to the final issue of the Fall 2003 Semester. I hope you enjoyed the fruits of this publication season. If you were a reader, I hope you found the subject matter informative and entertaining. If you folded this paper and placed it under a table leg to fix a wobble, I hope it did the job. If you ground it up and used it for cat litter, I hope your cat found it soft and sufficiently clumping. If you used it for any other application, I hope it served you well, whatever that might have been.

Publication will resume next semester on dates

yet to be set. If you are interested in becoming involved in any aspect of production, now would be a great time for you to voice your interest.

I would like to thank the staff members, independent contributors, and faculty who made this volume possible. They have left big shoes to fill for future endeavors in publishing.

Bear in mind that these are the years you will remember the most. Wouldn't you like those memories to be on a lasting medium such as paper?

Remember, any member of the Albright community is entitled to be heard, and a newspaper is a much more efficient way of being heard than yelling.



## THE ALBRIGHTIAN

Albright College Box # 107 • 13th & Bern Streets  
P.O. Box 15234 • Reading, PA 19612-5234  
Phone: (610) 921-7558 • Fax: (610) 921-7530

### EDITORIAL STAFF

Editor-in-Chief	Dan Ruedy
Asst. Editor-in-Chief	Gena Shupe
Copy Editor	Elizabeth Gaska
News Editor	Pamela Herb
Features Editor	Autumn Wilson
Sports Editor	Stacy Sekula
Design/Layout Editor	Ben Martin
Technical Support	Gene Ordway

Faculty Advisor: Archie Perrin  
Administrative Liaison

### OFFICE STAFF

Circulation Manager: Dan Ruedy

### Reporters

Shiela Berninger, Sumi Holman, Meg Shaw, Kate Hodge, Stacy Sekula, Stacy Stacherski, Lacey Egerton, John Kane, Jeff Feiler, Nick Pagano

### Columnists

Autumn Wilson, Adrian Chesh, Andrew Harris, Sumi Holman, Andrew Holets, Maurice Klesko, Becky Lewis, Dan Ruedy, Elizabeth Gaska, Pamela Herb

The Albrightian is published six times a semester by the students of Albright College except during vacation, holidays, and examination periods. The publication is printed by the Susquehanna Printing Press, in Ephrata, PA. All submissions become property of The Albrightian and the editors hold the copyright. All opinions expressed in The Albrightian are those of the authors of the columns and letters, and are not necessarily the opinions of Albright College, its faculty, staff, administration or its Board of Trustees.

The Albrightian reserves the right to edit letters for length and to reject letters if they are libelous or do not conform to standards of good taste. Send letters to Campus Center Box 1111. All letters received become property of The Albrightian.

## ADVERTISE WITH THE ALBRIGHTIAN

Looking to Increase Sales In The Most Effective Manner?  
If Your Consumer Is In The 18-22 Student Age Group...

WE'VE GOT THEM!

Display Ad Rate: (per 5 column spread)

1/8 Page = \$30    1/4 = \$50    1/2 = \$90    Full Page = \$150

Discount Rate For Six (6) Consecutive Ads (Full Semester):

1/4 Page = \$250    1/2 = \$500    Full Page = \$800

Classified Ad Rate: \$1 Per Word

For more information on circulation, ad format, and billing:

Box 107, The Albrightian, P.O. Box 15234, Reading, PA 19612-5234

Phone - (610) 929-7558 Fax - (610) 929-7589

E-mail: albrightian@alb.edu



# SPORTS

## Rugby Recap

John Doyle  
*The Albrightian*

This past weekend November 14-16, 2003, Albright traveled to Baltimore to play against the University of Richmond for the MARFU championship (Mid Atlantic Rugby Football Union) to be not only the champions of our own EPRU (East Penn Rugby Union) but champions from an area that covers from New York to Virginia. Unlike other sports where films are watched to prepare for the competition a little bit, the team went down to Baltimore unaware of what to expect from their opponents. Instead, they went just to play our game. That Saturday they watched All-star rugby games from the sideline, while making jokes about how Albright could out run any All-star team out there. Of course, this was said on the sidelines. Saturday was a long day of rugby and the team morale started deterring from the goal ahead. The team was anxious to get on the field and show what they were made of, instead of just watching.

Morning arose and

everybody reported to one hotel room to speak to their Captains. Tim Conaway expressed the need to win along with other encouraging words. When John Doyle opened his mouth the entire room was silent. Doyle mentioned some things that he thought everybody in the room should know. There was no yelling and screaming to fire everybody up, just a brief heart to heart that the boys needed to let them realize how serious the game was and how much each and every one of them meant to each other. The room responded well and headed off to their match.

They showed up early enough to watch two more games and then they were on. After a brief session of warming up and stretching the jerseys were put on. Albright took the field and circles around John Doyle for the final time this season for a chant that has been working all season to fire them up. Doyle was screaming, and the team repeated with the intensity of a thousand lions. The game was ready to go when team captain Tim Conaway won the

toss and deferred the return only to kick to Richmond.

After the ball was kicked, Albright quickly got it back to score two goals in the first fifteen minutes of the battle by senior Pat Bracken and Tim Conaway. The scoring would stop for the first half as things started getting a little sloppy on both sides due to a lack of team work. During the halftime, there was only so much to say. It came down to the team had to keep going because the game wasn't over. The boys reached down into their black hearts and gave it to Richmond for the second half and scoring two more times, thanks to Pat Bracken and Matt Robison. John Trainor contributed with a chip shot field goal for an easy three points so that Albright could get the ball back and do it all over again. Albright dominated the second half and gave Richmond two pity scores (the most let up by this team all season) and the game was over.

Happiness reigned as the referee blew the final whistle and those young men

became champions. Minor celebrations took place and the team shook hands after an incredible eighty minutes of the manliest game around. Albright gathered for pictures with loyal fans that have been there every game. The

team appreciated them very much. The award was presented with two official game balls.

John Doyle is a contributor to *The Albrightian*

### Football...cont from pg.1

three Dutchmen turnovers. The Lion offense, however, could not cash in and the score remained 30-7 heading to the fourth quarter.

The Lions added another score with 12:06 remaining in the final quarter to increase their lead to 37-7. Port completed a 7-yard touchdown pass to Cushman for his fifth touchdown pass of the afternoon to cap the drive.

Lebanon Valley added two fourth quarter scores to make the final score Albright 37, Lebanon Valley 21. Dorias had a huge day in the final home game of his career. He finished the afternoon with six catches for 185 yards and three

touchdowns. Both he and Cushman went over 1,000 yards receiving for the season. Adam Hubley had a solid game, picking up 95 yards rushing on 24 carries.

Defensively, Albright forced six turnovers on the afternoon. Byers had two interceptions, giving him eight for the season. Smith and sophomore Mark Fischer also had picks for the Lions. Smith also recovered to Lebanon Valley fumbles. Junior Marc Shoemaker led the Lions with nine tackles, including two tackles for loss. Senior Kenny Montout and sophomore Pete Manotti each recorded a sack for the Lions.

# STUDENT LIFE

## Designer Knockoffs: Do or Don't?

Tara Civitarese  
*The Albrightian*

Albright, two weeks ago: Before the entrance to the cafe were a few tables with merchandise on them. What kind of merchandise? Knockoffs of Kate Spade bags, Coach purses, Louis Vuitton purses, Prada wallets, Burberry scarves, and the list could continue on. For a second, I felt like I was on a street corner in Manhattan. Even though the items were fake, Albright girls flocked to these tables like little kids flock to ice cream trucks in summer. Seeing the cluster of girls nudging their way to the front of the tables made me ask the question, are knockoffs a fashion faux pas?

I am not sad to admit that I myself own a fake designer bag. My mother was

at Kutztown University and told me she bought a purse from a vendor for \$20 bucks. I couldn't even begin to imagine what she was going to show me, so I was totally shocked when she pulled out a Kate Spade bag. She had no idea who Kate Spade was and I excitedly explained to her that she designs bags that sell on average for \$180. "That's crazy," was all my mother said.

I also believe that spending hundreds of dollars for a purse, or any accessory for that matter, is just a little ridiculous. Maybe the question I should be asking is what exactly is in a designer name? With that in mind, I questioned several Albright students about the whole designer craze.

When questioned about what designer labels mean, whether

they are a mark of craftsmanship or just a way to express (without actually saying) I can afford this bag, the answers were split. Albright senior Dottie McMahon responded, "Designer labels really do not mean a whole lot to me. If I like the design and color, I will purchase it regardless of whose name is on it." Trevor Fisher, a marketing major, believes that designer labels are less about the product and more identified with status. Trevor says, "Designer labels start with pride from the owner of the company but once they hit the racks, all anyone sees is status."

The girls that were interviewed responded more positively to the idea of knockoff items. "I think

knockoff items are great, it helps people that can't afford to buy the real thing kind of fake it in a way," says Rebeka Slozak, a senior. The girls also said they would feel just as confident wearing a fake item as wearing a genuine one. "Your personality is what determines whether or not you can put something off, not the label on your accessories," says communications major, Gena Shope.

Surprisingly, all of the ladies answered that they WOULD tell someone that their knockoff accessory was in fact fake if asked by a random person. The reason? Because these girls like to look for bargains, and they are proud to show them off. So does buying a fake designer item make you guilty of

committing a fashion faux pas? Not necessarily. It all depends on how a person carries themselves and their sense of 'fashion'. The person should carry the purse, the purse shouldn't carry the person. If you buy an accessory, real or fake, just for the sake of getting noticed, than you yourself are erring in style judgment. Labels should be purchased because the consumer actually likes and has a use for the item, not just because it has a fancy French name on it. Price does not make things fashionable, the person does.

Tara Civitarese is a senior contributor to *The Albrightian*

## A Fresher Perspective...

Andrew Holets is a sophomore cartoonist for *The Albrightian*





# COMMENTARY

## Apathy is the Enemy

Genevieve Shope  
*The Albrightian*

I have to admit something, and up until this point it wasn't something that I regretted. I've found myself sitting in class waiting for the professor to arrive, joining the already established conversation centering on the worth of Albright College, by insisted that surely it was I who hated this school more than anyone else who tried to prove that same point. Clearly I am not alone in the apathy I feel towards Albright College, as discussions like this do go on, but lately I've been blaming myself more than the school.

For all of you that, like me, come to class and leave to willingly escape, it's your fault. While apathy, or

indifference, is easy to adopt, it's self-defeating. It seems like oftentimes Albright students adopt apathy as a defense mechanism... because at some point they cared about something, whether it was their education, their future or their social life. For lack of another alternative, which really amounts to pure laziness, students decided the school must suck because things aren't working out for them. For those of you who slight the educational promise of the school, regret your decision to come here, or already blame the school for your future job (or lack thereof), you are not taking advantage of the opportunities available.

This very newspaper is perhaps one of the best examples of student apathy. I

think it's safe to say that no one takes it very seriously, and while it has improved from its virtual non-existence, there's something left to be desired. That, however, is the fault of students who are neglecting an opportunity to publish their own work, or for that matter voice concerns that may have been the cause of apathy in the first place. There are a number of Communications majors who take no part in the paper's production and show no concern for its struggle. The newspaper is only one of many student organizations and I'm sure, like the paper, need students to join their ranks.

In terms of education, we're obviously not attending Harvard, but your education is what you make it. I've heard numerous com-

plaints from students that they are not receiving information that they think is crucial to their career choice. This is obviously true in some cases, as I can speak from personal experience in saying that the communications department is severely lacking, but it's not unheard of to ask for more work, or work that you think is necessary for your future plans. In defense of the Communications department, though last year's department doesn't deserve defense, the faculty and staff were more than willing to hear the concerns of students and work to effect change.

I'm coming to realize that one of Albright's strengths is its dependence on the individual student to make their time here worthwhile. The

accessibility and openness of faculty and staff and hands-on nature of such a small school make it near impossible for dissatisfaction to be anything but one's own fault. And if I can come to this realization, I think anyone can. Apathy is dragging the spirit of the school down, and generally it's not because of the school. Really, it's not that bad here. Believe me, and for those of you who didn't already know that, go do something about it.

Genevieve Shope  
is a senior columnist for *The Albrightian*

## Why Do Students Always Get The Shaft?

Dan Ruedy  
*The Albrightian*

This is an issue that's already been talked into the ground, but oh well. The other day I was trying to superimpose the hierarchy of priority at Albright into a basic food chain model. Then I took another shot. I came to the conclusion that although the rightful place of a student should be the role of a primary consumer, we've been pushed to the peripheral and forgotten realm of forager/decomposer; not the most glamorous spot to be in, considering our colleagues consist of fungi and grubs.

The College has put itself in a position in which it is attempting to maintain a symbiosis with several dozen organizations, visiting conference groups, and even the City of Reading itself. The College graciously offers its facilities for luncheons, seminars, dinners, etc.; students volunteer as tutors for the community, serve a variety of not-for profit organizations around the city, and don't forget about walking dogs for the humane society! The aforementioned constituencies instead assume the much more lucrative role of a parasite. In layman's terms, they suck our blood and we say "oh, lovely!" I would not dare venture to say that being so generous is a crime, but to put it bluntly, we as students are getting screwed.

The first manner in which we get screwed, if you will, is by those parking

enforcement officers. The blood-sucking City of Reading appears to have more than sufficient man power to scour the campus' adjacent streets for cars a few inches too far into the yellow, cars facing the wrong way on two-way traffic streets, and then the cars defiantly parked in the yellow because, well, we just don't care. I once received a ticket for being more than twelve inches away from the curb. No doubt; these guys are thorough and extremely precise. Then your car gets broken into by the elusive stereo bandit ring that has confounded students and amateur detectives alike. You call Reading police, and they say they're too busy to send an officer out. I'm sorry, but I can't fathom how they can pay guys to carry tape measures to check distances into the yellow or away from the curb, but they can't afford to send an officer to at least pretend to investigate a car break-in. The City of Reading receives so much revenue through this metaphorical proboscis of parking citations that it could probably reimburse every victim with a new stereo and a delicious turkey sandwich or, for the vegetarians, a succulent piece of lettuce and bean sprouts. Instead they sit on their hands and let the money roll in.

The next way we get screwed is through dining services. This is never their fault, and they get a lot of bad publicity for it, but all too often we get displaced from our own Caf because the

College has decided to host some sort of conference or big deal dinner. The Caf and campus center compose what is known at most schools as the "Student Union". These are facilities that should be reserved for the exclusive use and enjoyment of students and the immediate community, not an all-purpose venue to be sub-let at whim. There is nothing worse than walking into a Caf that is likely exceeding maximum capacity, filled with yuppies and dignitaries that don't understand why you're wearing pajamas on a Saturday afternoon or why your eyes are so red. The Caf does the best it can in this respect, often shutting down to students completely and offering passes to local restaurants and take-out eateries. The student body has mixed feelings on this. We believe either a) "Nino's Pizza is sweet and an excellent treat" or b) "I'm a freshman without a car and that's actually a pretty far walk. Thank you for yet another inconvenience." Especially since Nino's just relocated. Jake's passes work out for the most part, except that Jake's isn't really designed or staffed to serve more than five customers at once.

How is it that we, the students, the young and spry,



"The fungus that is amongus"  
One of many of our lower tier competitors!

the excellent predators of food and drink and other opportunity, are being placed in a position where we have to compete for parking spaces close to streetlights, scrape to get by, and sometimes even eat each other because we're so famished? Frankly, I don't know. It is completely illogical. To whomever it is that makes these decisions, I make this single plea; you do not want to upset the food chain. Students at Albright should be the primary consumer. Imagine how crazy

it would be if the tufted titmouse (a bird) started preying on the mountain gorilla? At first you'd find it interesting, but then it would lose its novelty quality and you would say "forgive me, but that is just too much". The only thing left to do is sharpen our fangs and clench around what few vestiges we have left of a reasonable existence.

Dan Ruedy is a  
junior columnist for *The Albrightian*