

Home Economics Takes Spotlight At Conference

Today, November 30, the Albright campus will be the scene of a home economics career day. Guidance counselors, home economics teachers, and interested students from area high schools have been invited to spend the day in an extensive study of the field of home economics.

The day will begin at 10 a.m. when all those who attend must register in the college dining hall. Following registration, the dining hall will again be the scene of an assembly. The welcome will be given by Dr. Samuel B. Shirk, Dean of Admissions.

This will be followed by a panel discussion on the topic: "Careers and Opportunities in Home Economics." The moderator will be Mr. John H. Bardes who is an architect for the H. L. Shay and Associates in Philadelphia. The panel members are all alumnae of Albright's Home Economics Department. They are Mrs. Doris Shack Bickley, assistant to Fashion and Advertising Director of the Chadbourn Gotham Inc., New York; Mrs. Joann H. Landis, head of the Home Economics Department at Fleetwood Joint Junior-Senior High School; Miss Carolyn Thorforde, Home Economist, Standard Brands, Inc., New York; and Mrs. Nancy B. Wenrich, Home Economist, Metropolitan Edison Company.

Luncheon will be served from 11:45 to 12:30 p.m. in the dining hall, after which the visitors will tour the campus until 1:15. After the tours they will reconvene in the dining hall for lectures on "Home Economics at Albright College."

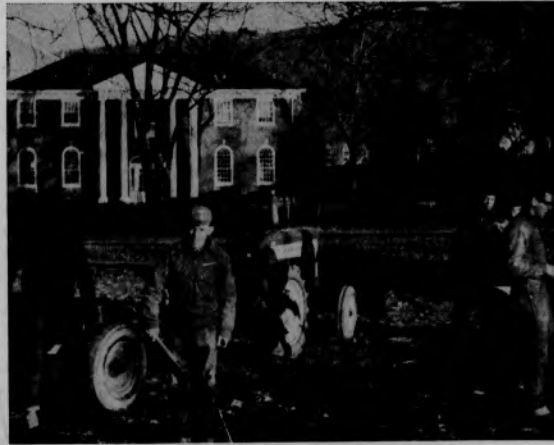
Miss Emma Seifrit, Acting Head of the Home Economics Department at Albright, will speak on "Courses and Experiences in Home Economics." Miss Phyllis Merle, president of the Home Economics organization will speak on that organization and show slides illustrating facts about this profession.

IRC Plans Mock UN For High Schools

A Model United Nations open to all area high schools will be held on the Albright College campus next Saturday, December 8, sponsored by the International Relations Club. Under the direction of President Dave Walton and advisors Professor William R. Bishop Jr. and Professor Charles A. Raith, the IRC will set up a working model of the world body in New York City.

The high school students have been preparing for some time to represent various countries. Students will also serve as committee chairmen and president of the General Assembly. These officers were chosen following interviews with the IRC this Monday. Consultation between IRC advisors and these students will take place at a meeting this afternoon at 3:45 p.m.

Trustees Announce Policy Changes



Workmen are shown above in the very early stages of clearing a plot of ground on which Albright College will erect a new library costing over one million dollars. The workers began clearing sod from the area last week. In the background, the Alumni Memorial Library can be seen. The new structure will clear the way for a renovation of that building for use by other departments.

Million Dollar Library Building on Schedule

In order to provide the ever-increasing tide of college potential with necessary study facilities, Albright College, in anticipation of an enrollment rise, has included a new library in its development plans. This new building will be located in front of the present library between Selwyn Hall and the Administration Building.

The structure is designed to hold 150,000 volumes in the library section. The new building will also house college administrative offices on the ground floor. The space that will become available in the present Alumni Memorial Library and the Administration Building will, however, be put to use. The library will be renovated for use, along with space in the other building, by the Psychological Service Center, the Home Economics Department, the physics department and the mathematics department.

The architect's estimate for the cost of the new building is one million fifty thousand dollars. According to the College Treasurer C. L. Gordon Jr. bids are now out and a number of local companies are working on them. The bids will be opened later in December.

While actual construction is not slated to begin until the beginning of next year, workmen have been removing the grass from the area where the new edifice is to be erected. Work on this began shortly before the Thanksgiving Day recess.

The new library is part of a development plan initiated by the Board of Trustees just over a year ago. According to the development plans, this step will add six classrooms in the present administration building. All in all the capacity of the library itself is about twice that of the present facility. It is designed to allow for a fifteen year period of growth.

Chem Student Cited For Academic Deeds

Grant Krow, Albright senior and president of the Student Associates of the American Chemical Society, was recognized as the outstanding chemistry student from Albright College. The monthly meeting of the Lehigh Valley Section of the A.C.S. was held in Reading at the Crystal Restaurant on Friday evening November 16. Dr. Benjamin H. Handorf cited Grant's athletic prowess as well as his high scholastic achievement upon making the recognition.

Six colleges in the area—Albright, Cedar Crest, Lafayette, Lehigh, Moravian, Muhlenberg—are represented in the Lehigh Valley Section of the A.C.S., and each year outstanding senior students in chemistry from each school, backed by other scholastic and social achievements, are recognized at a dinner in their honor.

In addition to the above mentioned honors, Krow is to be feted at the Chamber of Commerce sports banquet for his prowess in athletic events.

Plans Include \$150 Tuition Hike, Curriculum Shake Up This September

Following their meeting two weeks ago, the Albright College Board of Trustees announced a 150 dollar hike in tuition for students here. Along with that announcement, however, came word of a new curriculum policy as well. This will provide Albright students, beginning in September of 1963, with a larger range of selection in choosing academic courses.

The board of trustees announced that in connection with the recommendation of a study that has been made, there will be three major changes.

The general studies program will be broadened creating more intensive specialization in the junior and senior years. This provision also cuts down on the minimum number of credit hours required for graduation.

Changes are also due in the history of western civilizations course which is to be expanded to four credit hours instead of the present three. Students will all be required to do work in both music and art appreciation. Bachelor of arts and bachelor of science in economics students have a new option in their science: whether to follow the present science fundamentals course or elect a specific laboratory science.

Other changes include fulfillment of social science requirement with specialized courses in history, political science, sociology, or economics. A mathematics requirement will be added to the home economics program.

Students now at the college and all enrolled prior to September of 1963 are not affected by the changes in policy.

Three Act Play Set For Opening Next Weekend

"Would you like to kiss your cousin?" Who wouldn't if the cousin happened to be Elsa, a voluptuous secretary portrayed by Jane Mock in "The Desk Set." Romance, comedy, and adventure prevail in this three-act play to be presented at Krause Hall on December sixth, seventh, and eighth for a low admission of \$1.25 for non-student ticket holders.

Tom Kopel, Stewart Uhler, and Marcella Zegarski, play the lead roles and are backed by a host of other talented Albrightians. The combination of attractive secretaries, distinguished office executives, and a veritable Univac with an encyclopedic memory affords a perplexing plot and high excitement for all comers.

The Univac, by threatening to displace the secretaries, incites a showdown between itself, the girls, and their bosses. It provides romance through a shared dread of unemployment, and brings forth a critical analysis of company policies at the annual Christmas party.

Dr. Samuel B. Shirk recently announced additional members of the (Continued on Page 4)

Guidance Department Hosts Research Clinic

"New Frontiers in Guidance" is the topic which was covered by a workshop co-sponsored by the Conrad Weiser Branch of the National Vocational Guidance Association and the Department of Psychology at Albright College. The workshop was held at Krause Hall on Tuesday, November 20.

The directors were Dr. Roy B. Hackman and Dr. James Gaither. Dr. Hackman is the Professor of Psychology and Director of the vocational guidance clinic of Temple University. Both Dr. Hackman and Dr. Gaither appeared at the workshop through the courtesy of Randall Publishing Company.

The workshop's panel initiated discussion between the directors and the audience. On the panel

were Dr. Henry Shafer, principal of Wyomissing High School; Dr. Arthur Himmelberger, principal of West Reading High School; and Mr. Harry Gilbert, principal of Boyertown High School.

Moderator for the workshop's discussions was Dr. Stanley Smith of the Albright College faculty. Dr. Smith is head of the department of psychology and is Director of the Psychological Service Center.

The workshop got underway at approximately 2 p.m. with a talk on guidance by Dr. Hackman. Then it adjourned to the dining hall for coffee. The clinic was concluded with a talk on research in the guidance field by Dr. Gaither, and a cross discussion between the panel, the directors, and the audience.

CHECK AND MATE

By Chris Wolf

The first Albright College chess tournament finally got underway last week with some 22 students competing for the coveted title. The tourney is sponsored by "The Albrightian" and consists of double-elimination matches. As soon as a player loses two games, he is then eliminated from further competition.

As this is written, no one player can be labeled as the favorite. There are four contestants, however, that should be given a slight edge on the basis of their experience. Three upperclassmen, John Heilman, Steve Gursland and Dave Schreiber, and one freshman, Jose Sanchez, form the quartet. Of course, the fact that Sanchez is our editor in "The Albrightian" has nothing to do with his being selected (not much).

Of the four, Schreiber looms as the most powerful. Dave opened with a sound victory over Mike White whom he mated in some fifteen moves. A key game was set for Monday when Schreiber and Gursland were scheduled to meet. Heilman and Sanchez have, so far, drawn relatively easier opponents.

Two or three players must rate as black horses in the heated race. Junior Charles Loring, sophomore



Jill McKinney and frosh Roger Ulrich and Jim Livingood could very well upset any of the above-mentioned four. All in all, this promises to be a very interesting tournament and we encourage anyone interested in chess to come down to the "sub" sometime and watch some of the games.

After the tournament, "The Albrightian" hopes to arrange for a home-and-home chess match with the Kutztown State team. The members of the Albright squad (four boards and a substitute) would be chosen from the top finishers in the tourney. The Golden Bears have had a chess team for quite a while and even compete in a state league. This match would be the only present contest of any kind pitting Albright against Kutztown.

Our chess problem for last week has caused quite a commotion around campus and several "buffs" have even claimed that there is no possible solution. The first and most important move, yes, there's a solution, is White's K-B1. After that powerful move, any one of Black's alternatives results in a one-move mate. Try it and see.

Letters To The Editor

Dear Editor:

I have just finished reading in the second issue of "The Albrightian" that several students are complaining to Student Council concerning the meals served in our dining hall. After due consideration to their charges, I have several suggestions for them.

First: I recommend that they should spend a day in the kitchen observing the activities within its walls. Mr. Van Driel and his staff put a great deal of time into the preparation of our meals; much more time than the Albright student body realizes. Mr. Van Driel works hard making sure that the food and service are the best possible under the handicap of having to serve over 500 students.

This leads me to my second suggestion. These students should stop and think for a second about the responsibilities and difficulties that they would have in such a position.

Third: They should question members of the Pennsylvania Restaurant Association about the efficiency of Mr. Van Driel and his staff. They will then receive a favorable PROFESSIONAL opinion.

Fourth: These grippers should visit other colleges and take notice of the meals served there. They will find that Albright is well, and I mean well, above average.

Fifth: When you are dealing with 500 individuals, there are bound to be different tastes. Satisfaction for all and at the same time is an impossibility.

Sixth: If the above suggestions failed to halt the criticism of these students, there is only one course left. You will have two "musts" to bring to college next semester: your mummies and your high chair. Then Mom could place you in your high chair and feed you whatever your little tummy desires. Satisfactory enough?

Edward Steitler

AS WE SEE THEM

Below are ratings for the four shows which will be presented in Penn St. theaters this weekend. The rating system key reads as follows:

- ****Don't miss it!
- ****Worth seeing.
- ***Entertaining.
- **If you have nothing better to do.
- *Save your money.

- November 30, 1962
- ASTOR—"If a Man Answers"*
 - LOEW'S—"The Manchurian Candidate"****
 - EMBASSY—"Girls! Girls! Girls!"*
 - WARNER—"The Smashing of the Reich"****
 - BEST BET—"The Manchurian Candidate" at the Loew's. Powerful drama starring Frank Sinatra, Laurence Harvey and Angela Lansbury.



"Say PEPSI, Please"

AT THE MOVIES

Picture: "THE MANCHURIAN CANDIDATE"

Cast: Frank Sinatra, Laurence Harvey, Janet Leigh

Studio: United Artists.

Most critics have handled this picture with unkind comments and sharp blasts at its unusual technique and even more unusual plot. However, this reviewer found "The Manchurian Candidate" one of the most intriguing and best made pictures to have come out of Hollywood in recent years.

The drama revolves around an American G.I. (Laurence Harvey) who has been brainwashed by the Red Chinese and converted into a merciless killer. He is then returned to America with his patrol as a war hero. He remembers nothing, but the Communists can still control him in any way they want. His war-time superior (Frank Sinatra) tries to lend a helping hand and eventually uncovers the Red plan. Of course, there are several obstacles along his way and many surprises in the development of the plot (including a surprise ending right out of Alfred Hitchcock's collection).

The production tries to be different in many ways and reaches its goal. The off-beat plot and refreshing camera work proves interesting to the viewers. We must warn you, nevertheless, the movie is as gory and bloody as anything since "Ben Hur" and a strong stomach is a key requirement to its enjoyment.

The only other objection we found was Janet Leigh's role in the production. She portrays a completely unnecessary character, simply placed there for Sinatra to love. She could have been cut from the cast without any harm, and perhaps some good, to the film's quality. Over-all, we strongly recommend you view "The Manchurian Candidate." It's different, interesting and, surprisingly enough, good. Don't miss it!

House of Edgeworth Scholarship Announced

Tonight, tomorrow night, next Friday, and next Saturday the Muhlenberg College Experimental Theatre will present a play, Faustina, by Paul Goodman. The production will be given in the science auditorium of Muhlenberg College, beginning at 8:00 p.m.

The author, a contemporary poet, writer, and contributor to the Quarterly Review of Literature has reportedly been involved in the production. Faustina was written in 1956 and is based on the lives of Marcus Aurelius and Annia Faustina, Emperor and Empress of Rome.

December is designated as International Aviation Month, Jewish Book Month, December 1-31 as Pickle Days, December 1-26 as Worldwide Bible Reading Time. Human Rights Week is set for December 10-16 and the 10th is United Nations Human Rights Day. National YMCA Week comes January 20-27 and the National Franklin Thrift Observance is scheduled January 17-23. On January 1 comes the first, brace yourself, "International Take-a-Deep-Breath Day" promoted by New York Free for All, Box 1, New York 9. Don't forget to write for details!

Muhlenberg Thespians To Present 'Faustina'

The third annual House of Edgeworth Scholarship Awards contest offering cash awards totalling \$1,000 for college students in marketing and advertising has just been announced by Larus & Brother Company.

The awards consist of three cash prizes of \$500, \$300 and \$200, given for the first, second and third best marketing and advertising programs for selling House of Edgeworth pipe tobaccos to the young men's market.

Many marketing and advertising professors of leading colleges and universities have used the House of Edgeworth Scholarship Awards contest as a class assignment, giving the student the dual advantage of getting class credit for the work as well as serving as an entry in the competition. Comment has been that the contest affords a very interesting as well as practical challenge as it involves actual products which are sold throughout America and around the world.

Bouncy Bob

Here are Bouncy Bob's basketball predictions for Albright games up to December 14.

December 1 — ALBRIGHT over Wilkes. The Lions' fast-break will be no match for the bigger, but slower colonels.

December 4 — ALBRIGHT over Gettysburg. A close squeaker over the rejuvenated Bullets makes it two in a row for Will Renken's crew.

December 6 — LEHIGH over Albright. The Engineers have just a little too much for the Lions.

December 8 — ST. JOSEPH'S over Albright. The Hawks were upset here last year and they'll be looking for revenge.

December 12 — ALBRIGHT over Elizabethtown. The Listown quintet should be no match for the hungry Lions.

Further contest information can be obtained by writing to House of Edgeworth Scholarship Awards, Larus & Brother Company, Richmond, Virginia.

BIG FAVORITES ON CAMPUS



A ThriftiCheck PERSONAL CHECKING ACCOUNT

... and this handsome checkbook cover with your college emblem — symbols of financial stability — a compact bookkeeping system and bill payer in one.

This checkbook cover is yours FREE when you open your ThriftiCheck account. You'll always know what bills you've paid and the money you have left. Your parents can deposit your allowance directly to your account, saving time and trouble for you. Just a few pennies per check... no minimum balance required.

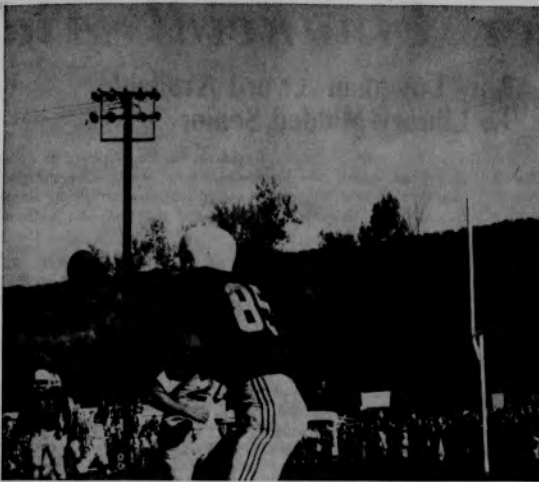
BERKS COUNTY TRUST COMPANY

READING, PA.

9 OFFICES / 12 Drive-In Windows

READING • MT. PENN. • MOHNTON • TEMPLE • RIVERSIDE • MUHLENBERG

Member Federal Deposit Insurance Corporation



Dismal Grid Season Ends On Winning Note With 34-0 Win

By Art Arbogast

After finishing with a so-so 3-5 record, the Albright Lions find themselves under the .500 level in football for the first time in four years. The record, however, does not tell the whole story of this 1962 gridiron campaign. Most of the lost games were very close and could have gone either way, as the adage says. Unfortunately, the breaks went against the charges of Coach John Potsklan more often than not.

Although outscored, the team was never outfought. The men played hard and gave full effort for sixty minutes each game. The team lost several key men last year (most prominent are, of course, Gary Chapman and Gary Sheeler) and this was one of those losing years which are labeled as "rebuilding" seasons. In the Lions' case, the label fits the product. Many underclassmen got starting nods from Potsklan and gained invaluable experience. Only time will tell the true value of this '62 year.

Four hard-charging linemen donned their red and white uniforms for the last time against Franklin and Marshall on November 16. The quartet, the lonesome seniors on the roster, included Jim Huie, a hustling performer, Harold Buck, Don Reitscha and Rod Duckworth: They will be missed next September.

The 1962 season opened in a grim note as the Albright "frosch" saw their Lions' 21-game unbeaten streak ended by a determined Locomotive eleven, 20-6. The Potsklanmen edged the Warriors in every statistical department except the score. That was the only thing lacking.

The Lions then traveled to Allentown where they dealt Muhlenberg a 14-8 setback. Albright again had trouble crossing the goal-line but managed to hang on for the verdict.

Gettysburg invaded Albright Stadium for the annual Pretzel Bowl game and went home victorious, 20-6. The Bullets were able to capitalize on the few, but gross, Red and White mistakes. Homecoming Day saw the Moravian Greyhounds edge the Lions to the tune of 16-13. The alumni were disappointed at the final score, but not at the general willingness of the squad.

A long trip to Youngstown, Ohio, brought on a 14-6 loss at the hands of the Penguins. The

Courtmen Visit Wilkes Tomorrow

Will Renken and a dozen basketball players face the task of making Albright student body forget the ups-and-downs of a disappointing football season with some spectacular hoop achievements. Tomorrow night, the hopeful Lions travel to Wilkes-Barre for their opener against Wilkes College.

Renken has enjoyed some excellent seasons the last three years, winning 55 and losing 27. In 1961 the Red and White copped the Middle Atlantic Conference College Division championship and the MAC's Northern College Division title in 1962. The Lions bowed to Mt. St. Mary's in the finals of the NCAA East Regional College Division playoffs in 1961 and again lost to the same Mountaineers in the NCAA East Regionals last winter in a four-overtime battle.

The biggest problem facing the 1962-63 edition of the basketball court is a frightening lack of height. Last year Renken lost Ken Van Dine, rebounding leader, but was able to replace him with 6-7 Bob Holzinger, another strong man under the boards. Holzinger graduated last June, and 6-4 Norm Bautsch is the logical candidate for the pivot post.

Whether Bautsch can handle the rebounding duties or not remains to be seen. He will not get much help, though. Ted Evans and Ray Sommerstad, the next two forwards, only measure up to 6-1 and 6-3 respectively. The starting quintet is completed by Tom Pearsall, 5-8, and Stan Saul, 5-7, hardly what you could call rebounders.

Coach Renken hopes to upset the size handicap with a fast-breaking attack, typical of Albright, and the canny shooting of Pearsall. The driving senior has tallied 1,681 points during three years and he's a cinch to pass George Conrad in the all-time scoring list of Albrightians. Tommy needs 39 points to take the lead from Conrad and he should have reached that total by the third, or at the latest, the fourth game.

The Red and White schedule in the MAC has two important home dates in the first semester. On January 5, conference-favored Susquehanna visits Albright and on January 9 the Lions play host to arch-rival Hofstra College. Other key games are set for December 8 at the Palestra against St. Joseph's University, December 15 with Lehigh at home, and on February 25 with Delaware at home. The annual Albright Invitational Tournament will be played on December 28-29 with Rochester, Rutgers, Williams and Albright as the four competitors.



Freshman Corps Paces Albright Harriers to Improved Slate

By Emmett Vennett

Their 4-7 final record doesn't truly show it, but the members of the Albright cross country team made great improvements over their previous accomplishments. The losing slate is not as important as are the other signs of progress made by our harriers.

Thanks to a remarkable turnout of freshmen, coach Gene Shirk could finally count on a fair-sized squad, rather than last year's ridiculous total of six runners. What was even more surprising was the superb quality of these freshmen. The trio of Eric Clough, Larry Squires and Herman Dale, all right out of high school, came through with some of the finest cross-country running Albright has had for quite a spell.

Topping the harriers' year was the Middle Atlantic Conference run in which the Lions placed 11th in a field of 18 colleges. Eric Clough placed 31st to pace the Red and White forces. The other top four runners included Larry Squires, Herman Dale, Bill Salanek and Kenny Lynch. Salanek is the only upperclassman of the five and he will be graduating in June, representing Coach Shirk's lonesome loss for the upcoming campaigns.



Inside And High

By Mike White



Well, the season is finally over, and this reporter is taking a minute or two out to look back over a football year that was sometimes hopeful, sometimes very disappointing.

The squad finished with a record of three and five, which is admittedly a far cry from the undefeated seasons of the past two years. The most impressive games were the Lebanon Valley tilt, in which the Dutchmen were strong favorites, and the final game with the Diplomats of Franklin and Marshall. Albright beat LVC in the snow, 23-0, in a contest which combined excellent offense as well as defense, something that had been noticeably lacking in other games. The Lions trounced the hapless Diplomats (0-8 for the season), using sheer power on offense to rack up the season's highest point total, 35-0, as well as the most lopsided game.

It is this reporter's opinion that the season was one of triumph, rather than disappointment, despite the losing record. Gone are the heroes of past teams; Albright, acknowledgedly a small school, has no reserves to call up to the varsity to enable the team to continue its winning streak over a number of years, as did Oklahoma a few years back, and Alabama, more recently. As a matter of fact, many major-college teams list upwards of eighty men, all capable of playing inter-collegiate football, on their rosters at the beginning of the season. Albright just hasn't the personnel to do this. Every so often a team such as ours must rebuild.

Coach Potsklan, who has done an admirable job with the inexperienced material at hand, is rebuilding at Albright. By the time the many freshmen and sophs on the squad are seniors, the Lions may again boast a perfect record. Gerry Smith, a fellow freshman, led the team in rushing. Sophomore signal-caller Lew Nevins is expected to be the quarterback again next season. Only three starters on the line will be lost through graduation, with plenty of underclass beef ready to fill in. It looks good for the Lions.



Women Vie Against Four Area Schools

Approximately twenty women will travel to Kutztown State College tomorrow to represent Albright in a Volleyball-Swimming Play Day. Delegates from Kutztown, Cedar Crest, Muhlenberg, Moravian, and Albright will start competition at ten o'clock in the various events. Featured on the agenda are novelty swimming races, relays, and a volleyball tourney.

After several practice sessions, the following were selected to contend in the volleyball matches: Sandy Rothenberger, Ruth Evans, Doris Eger, Elaine Murchinson, Connie Dudek, Sue Thorn, Susan Peters, and Carol Jensen. Chosen as substitutes were Carol Miller, Jean Truesdale, and Suzanne Siebert. The six-member swimming team has not yet been announced.

SPANISH CLUB NAMES OFFICERS

At the first meeting of the Spanish Club, La Sociedad Cultural Espanola, sponsored by Mrs. H. C. Jordan, the members elected Pat Modlin, '63, president of the organization. Other officers include Alberto Ross, '66, vice president, and Chris Bupp, '65, secretary. Ross is an exchange student native to Cuba.

The Spanish Club participated in the YWCA International Festival on November 7. A dinner made up of foreign dishes was served and the Albright club made and sold two Spanish desserts. The proceeds went to the international fund of the YWCA.

Mrs. Jordan announced that the Spanish Club is planning a Christmas party for Spanish speaking children in Reading. Later this year a Spanish movie will be shown and all interested students from the Berks County high schools will be invited.

The organization meets whenever there is a need or an activity that interests them. The membership is open to all third and fourth year students or those majoring or minoring in Spanish. All meetings are in Spanish and the meetings are conducted in that language.

W. B. BOYER, INC. PHARMACY

13th and AMITY STS.

Friendly, Courteous Service For Your Personal Needs

Laurel Lanes, Inc.

3417 5th Street Highway
LAURELDALE, PA.
Dial 929-9481

FEATURING

- 24 Beautiful Lanes with Automatic Pinsetters
- Sport Shop
- Meeting Rooms
- Nursery
- Locker Rooms
- Free Parking
- Bus Service to the Door
- Free Instruction Clinic

FORM YOUR BOWLING PARTY NOW AND HAVE A BARREL OF FUN

Three Sources Offer Financial Aid

Gibbs Girls Schools Present Two National Scholarships

Two national scholarships for college senior girls are offered for 1963-1964 by the Katharine Gibbs School. These awards were established in 1935 as a memorial to Mrs. Katharine M. Gibbs, founder and first president of the school.

Each scholarship consists of full tuition for the secretarial training course, plus an additional cash award of \$500, totaling \$1,435.

The winners may select any one of the four Gibbs schools for their training—Boston, New York, Montclair, or Providence.

Winners are chosen by the Scholarship Committee on the basis of college academic record, personal and character qualifications, financial need, and potentialities for success in business.

Each college or university may recommend two candidates, and each candidate must have this official endorsement. Students who may be interested in competing for one of these Katharine Gibbs awards may obtain full information from the college placement bureau.

Sports, Social Life Take Up Sorority Time

The PATs plan to make 1962-63 a big year, and they have started off well. On November 4, a rather worn, but nonetheless enthusiastic pledge class, including Anne Bass, Miriam Cooper, Lyndel Mooney, and Barbara Rau were inducted as sisters of the sorority. On November 5, fifty-six Freshman hillbillies showed up at "Hillbilly Heaven" (Bowl-O-Rama) for the rush party. On homecoming weekend the PATs took first place in the Song Fest with "Summertime", and on Tuesday, November 13, they beat the MUs 2-0 in a hockey play-off, taking the hockey championship.

The Annual Fall Rush Dance is planned for next Friday, December 7, with music to be provided by the "Norm-Ron Four." It will be held at the Reading Country Club. Other events planned for the year are the Rush Tea, February 3; Spring Pledging; and the Spring Weekend, May 17-19.

The Mus also look forward to a big year. Monday, November 19, they had a rush party for the Freshman girls. The theme, "Cavalcade of Comedy" (all dressed as their favorite comic-strip character) was itself conducive to an evening of fun. The Mus were busy Homecoming Weekend, as they produced their float, "Stop the World, I Want to Get Off!", and sang "I Feel Pretty" at the Song Fest.

Early's Old Fashioned Chocolates

CANDY KITCHEN
at 1428 Amity St.
Only "3" Blocks from Albright

WOODY'S BARBER SHOP

11th NEAR SPRING
Open Tuesday, Thursday,
Friday, Saturday
WEDNESDAY
By Appointment Only
376-1378

National Academy Grants Graduate Fellowships

The National Academy of Sciences-National Research Council has been called upon again to advise the National Science Foundation in the selection of candidates for the Foundation's program of regular graduate and postdoctoral fellowships. Committees of outstanding scientists appointed by the Academy-Research Council will evaluate applications of all candidates. Final selection will be made by the Foundation, with awards to be announced on March 15, 1963.

Fellowships will be awarded for study in the mathematical, physical, medical, biological, and engineering sciences; also in anthropology, psychology (excluding clinical psychology), geography, economics (excluding business administration), sociology (not including social work); and the history and philosophy of science.

They are open to college seniors, graduate and postdoctoral students, and others with equivalent training and experience. All applicants must be citizens of the United States and will be judged solely on the basis of ability.

Applicants for the graduate awards will be required to take the Graduate Record Examination designed to test scientific aptitude and achievement. This examination, administered by the Educational Testing Service, will be given on January 19, 1963, at designated centers throughout the United States and certain foreign countries.

The annual stipends for graduate Fellows are as follows: \$1800 for the first level; \$2000 for the intermediate level; and \$2200 for the terminal level. The annual stipend for postdoctoral Fellows is \$5000. Limited allowances will also be provided to apply toward tuition, laboratory fees, and travel.

Further information and application materials may be obtained from the Fellowship Office, National Academy of Sciences-National Research Council, 2101 Constitution Avenue, N.W., Washington 25, D. C. The deadline for the receipt of applications for regular postdoctoral fellowships is December 17, 1962, and for graduate fellowships January 4, 1963.

Eleven Albright Seniors Are Picked For Collegiate 'Who's Who'

This year eleven Albright seniors have been nominated to Who's Who Among Students in American Universities and Colleges. The students, who were chosen as a result of student participation in college activities, scholarship, and future usefulness to the college and the community, are as follows:

Janet L. Blumberg, who is enrolled in Albright's Education Course, hails from Mt. Holly Springs, Pa. She is currently the president of the French, German, and Glee Clubs.

Barbara J. Buchter, a Reading resident, is taking the Liberal Arts Course at college. At present, Barbara is devoting most of her time to editing *The Cue*.

James F. Clayter, who is majoring in sociology and minoring in history, is a resident of Arlington, Virginia. Besides being president of the YMCA, James has won second prize in the Kelchner Oratorical Contest and has been a Natural Science Fund Assistant. Jim has also worked on *The Cue*.

Carol J. Hagenbuch, who commutes from West Reading, is a

Home Economics major. Not only is Carol president of Phi Beta Mu and the Inter-Sorority Council, but she has participated in hockey, basketball, volleyball, the Glee Club, WAA, and R.O.

Wilson N. Kratz, who resides in Telford, Pa., is a Liberal Arts major. Besides being president of the Class of '63, Wilson has participated in basketball and track. In his sophomore year, he was also the vice-president of his class.

Michael D. Marino, who comes from Norristown, Pa., is currently the vice-president of both the Senior Class and Zeta Omega Epsilon. Mike also has participated in wrestling and IRC at Albright.

Dorothy M. McCash hails from Oil City, Pa. and is Science-Biology major. In addition to being the president of the Women's Resident Organization, Dorothy has taken an active interest in basketball, volleyball, and Albright's Band.

Barry J. Parnsey, a resident of Reading, is a Liberal Arts student. Although best known as president of the Student Council, Barry is also secretary of Kappa Upsilon Phi and a member of the Domino Club.

Carl D. Schneider, who is a Pre-ministerial student at Albright, comes from Philadelphia. Although he is president of Kappa Tau Chi, Carl has also taken an active interest in the International Relations Club, The Agon, and cross country.

Barbara J. Wilcox, whose home is in Mamaroneck, New York, is enrolled in the Medical Technician course. She is currently the vice-president of Pi Alpha Tau and has been active in the Domino Club.

Amy Loveman Award Available To Library Minded Senior

For the second year, the Amy Loveman National Award is being offered to a college senior who has collected an outstanding personal library. Established in 1962, the annual award is sponsored by the Book-of-the-Month Club, the "Saturday Review", and the Women's National Book Association.

A distinguished panel of judges will again decide the winner. The panel will include a "Saturday Review" editor, a Book-of-the-Month Club judge, a nationally known college or university librarian, and a nationally known author, critic, or book collector.

Chairmen of Campus Library Award Committees, after selecting a local winner, are asked to submit nominations of senior students for the national award. The deadline for nomination is April 30th. The award will be made at the winner's commencement.

For the purpose of the Amy Loveman Award, a collection of not less than 35 books will be considered. The student must present an annotated bibliography of his present collection, and provide comments on three relevant points: "How I would start building a home library;" "The next ten books I hope to add to my personal library and why;" and "My ideas for a complete home library."

Collections will be judged on the basis of intelligent interest, scope and imagination shown in creating the library, and knowledge of the books as revealed in the annotations. Collections of any type (excluding textbooks) are eligible, whether centered on a subject or avocation, a single author or group of authors, or general.

The Amy Loveman National Award was established in memory of the late associate editor of "Saturday Review", who was also a judge for the Book-of-the-Month Club as well as a member of the Women's National Book Association and winner of their Constance Lindsay Skinner Award. An active and widely respected figure in journalism, Miss Loveman was especially concerned with broadening the book horizons of young people.

Inquiries regarding the 1963 award should be addressed to Amy Loveman National Award, Box 553, Times Square Post Office, New York 36, New York.

Play . . .

(Continued from Page 1)

cast for the Domino Club's stage production. Included are Jeanne Truesdale, Ellen Kern, Kathleen Marमारou, Judith Adams, Michael Shuck, David Jurji, Curtis Shaffer, Kenneth Kostenbader, Paul Douglass, and Constantina Dudek. The part of the photographer, had not definitely been filled at the news deadline.

Stage manager for "The Desk Set" is Lynne Shivers. Other student aids in production are Lenore Beers, John Greaser, Alan Pareis, JoAnne Hydock, Julia Kallipolitan, Elizabeth Davis, Michael Shalter, Marian MacDonald and Anna Mae Staudt.

Activity ticket 20 may be exchanged to gain admission. There will also be a charge of ten cents tax. Tickets went on sale in the administration building yesterday.